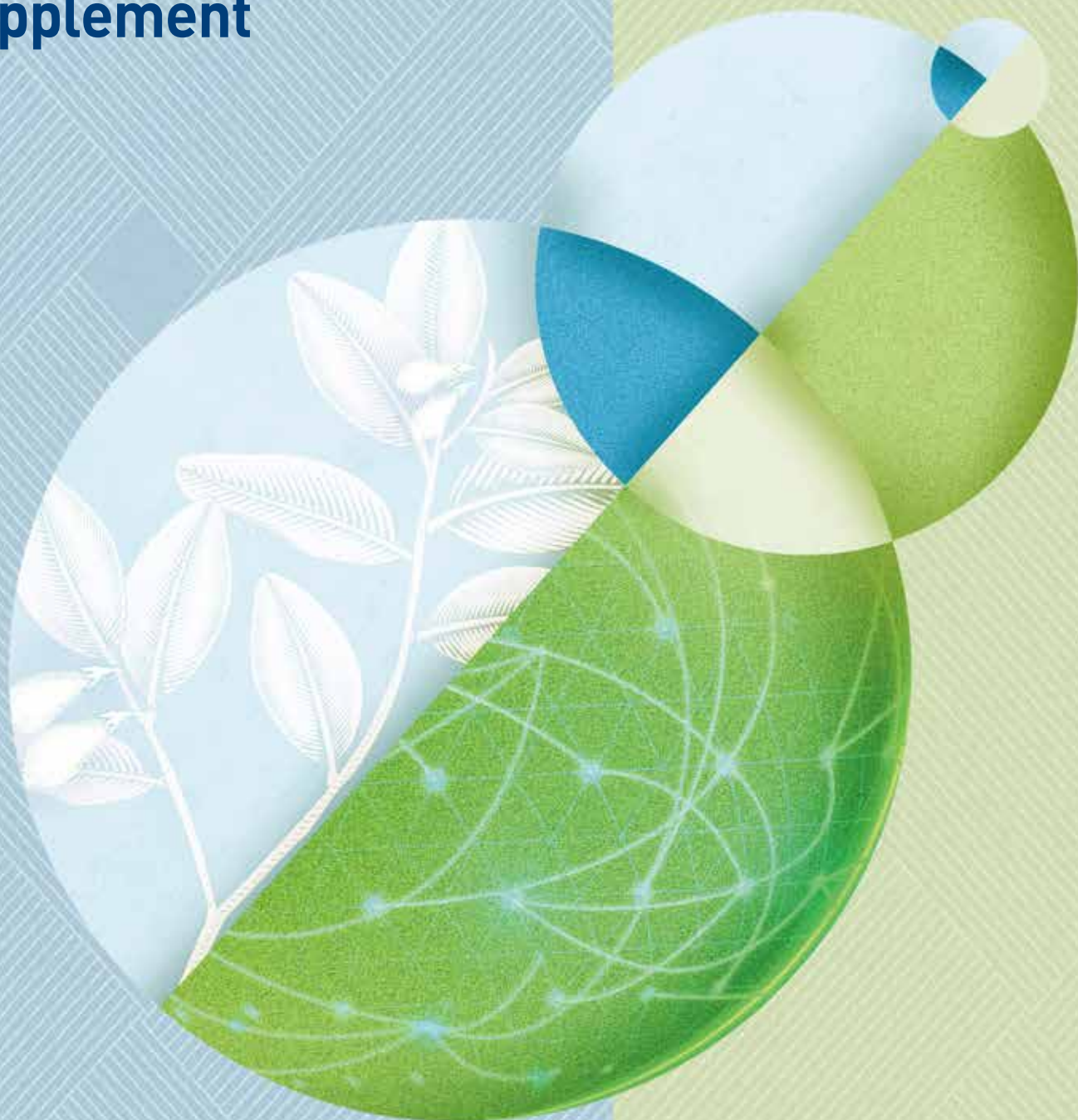




**Health Bureau**  
The Government of the  
Hong Kong Special Administrative Region  
of the People's Republic of China

# Chinese Medicine Development Blueprint Supplement







# Content

<b>Preface</b>	02
<b>National Directions and Strategies for Chinese Medicine Development</b>	03
<b>Current Chinese Medicine Development in Hong Kong</b>	06
<b>Vision of Chinese Medicine Development in Hong Kong</b>	09
<b>Overall Goals</b>	11
<b>Chinese Medicine Services</b>	12
Goal 1: Enhancing Clinical Services Excellence	19
Goal 2: Establishing an Interprofessional Service System	23
<b>Chinese Medicine Profession</b>	34
Goal 3: Leading Chinese Medicine Professional Development	40
<b>Chinese Medicines Development</b>	50
Goal 4: Enhancing Chinese Medicines Quality and Standard	56
Goal 5: Contributing to the Establishment of International Standard for Chinese Medicines	60
Goal 6: Driving Chinese Medicine Innovation in Research and Industry	61
<b>Cultural Inheritance</b>	70
Goal 7: Promoting Culture of Chinese Medicine	74
<b>Go Global</b>	78
Goal 8: Facilitating the “Go Global” of Chinese Medicine	82
<b>Institutional Framework for Implementing the Blueprint Measures</b>	86
<b>Conclusion</b>	89
<b>Reference</b>	90
<b>List of Abbreviations</b>	91
<b>Glossary of Terms</b>	93
<b>Appendix A : Summary Table of Actions</b>	96
<b>Appendix B : Membership List of the Chinese Medicine Development Blueprint Subcommittee under the Chinese Medicine Development Committee</b>	104

# Preface

Chinese medicine (CM) has long been an integral part of Hong Kong's healthcare system. In recent years, the Hong Kong Special Administrative Region Government (the Government) has placed particular emphasis on the development of CM, strengthening its efforts to advance multiple critical policy initiatives. These include strengthening CM regulatory framework, continuously expanding CM and integrated Chinese-Western medicine (ICWM) services, establishing Hong Kong's first CM hospital and the permanent premises of the Government Chinese Medicines Testing Institute (GCMTI) and formulating the Chinese Medicine Development Blueprint (the Blueprint).

As the first policy document published by the Government specifically dedicated to the development of CM, the Blueprint outlines a forward-looking vision. It defines short, medium and long-term goals and actions across key areas to promote the comprehensive, high quality and high level development of CM. During the Blueprint formulation process, the Chinese Medicine Unit (CMU) of the Health Bureau (HHB) engaged local, Mainland and international

stakeholders in nearly 400 consultation and discussion sessions through various platforms and means to gain in-depth understanding of the current situation of the sector and explore the feasibility of different development directions and measures. The Blueprint aligns with national CM development strategies and consolidates views from the CM sector and various stakeholders. To improve population health, support professional development within the CM sector and enhance the public's sense of well-being, the Blueprint introduces initiatives to enhance and popularise CM services, establish and strengthen the CM professional personnel system, foster the development of the Chinese medicines (CMs) sector (including Chinese herbal medicines (Chms) and proprietary Chinese medicines (pCms) and promote CM culture. Furthermore, the Blueprint will enable Hong Kong to leverage its distinctive advantages of enjoying strong support of the Motherland and being closely connected to the world, facilitate its participation in the national strategy for CM to go global, with a view to enhancing the standing of CM within the international traditional medicine community.

# National Directions and Strategies for Chinese Medicine Development

CM development is highly prioritised at the national level. The National Administration of Traditional Chinese Medicine (NATCM) formulates strategy, plan, policy and relevant standard for CM development, while the National Medical Products Administration (NMPA) oversees the safety, standardisation, registration, quality and post-market surveillance of both CMs and Western medicine (WM) products. The *Law of the People's Republic of China on Traditional Chinese Medicine* came into effect in July 2017, reformed the regulation of CM services so as the practice of the sector. It stipulates that relevant regulations should in line with the characteristics of CM, while also encouraging the inheritance and innovation of CM to recognise the significance and status of CM so as to safeguard and promote CM development.

The *Decision of the Central Committee of the Chinese Communist Party and the State Council on the Reform and Development of Public Health and Medical Service* released in 1997 explicitly identified equal emphasis on CM and WM as one of the guiding health principles. In 2002, the State Council issued the first strategic document for developing CMs—the *Development Outline for the Modernisation of Traditional Chinese Medicine (2002–2010)*. This document elevated the CMs industry to a major strategic industry, proposing the modernisation of CMs through modern science and technology to enhance its international influence.

To further promote the advantages of CM and develop the CM health sector, the State Council issued the *Outline of the Strategic Plan for Developing Traditional Chinese Medicine (2016–2030)* in 2016. This document defined the key focuses for CM development and work up to 2030 based on the circumstances at the time, aiming to fully leverage CM's role in deepening the reform of the medical and healthcare systems. It affirms the equal status of CM and WM in terms of legal, academic, and clinical practice, with the theme of advancing the inheritance and innovation of CM by following its own development laws, and improving management

systems and policy mechanisms that in line with CM's characteristics.

In 2019, the State Council promulgated the *Opinions on Promoting the Inheritance, Innovation and Development of Traditional Chinese Medicine*. The document upholds the policy of equal emphasis of CM and WM and advocates a complementary and coordinated development model of CM and WM, aiming to leverage CM's inherent advantages, establishing key direction for promoting CM development. The document explicitly calls for improving the CM service system, leveraging CM's unique role in maintaining and promoting public health, strengthening talent development and the high quality development of the CM sector, and promoting the opening-up of CM. This includes integrating CM into international cooperation under "Belt and Road" initiative and implementing specialised CM international cooperation projects.

To advance CM development in the Guangdong-Hong Kong-Macao Greater Bay Area (GBA), NATCM promulgated the *Construction Plan for the Chinese Medicine Highlands in the Guangdong-Hong Kong-Macao Greater Bay Area (2020–2025)* (the Highlands Construction Plan) in 2020. It explicitly states that the development of GBA is a major national strategic deployment and a significant decision to integrate Hong Kong and Macao into the national development framework under the "One Country, Two Systems" policy. The construction of CM highlands is an important component among the overall GBA development. To promote high quality CM development, enhance health standards, and foster prosperity in GBA, the Highlands Construction Plan proposes building five highlands for healthcare, innovation, talent, industry and internationalisation, aiming to promote CM inheritance and innovation, accumulate experience for building a high quality CM development system for the nation, and provide a model for promoting global expansion of CM. Regarding Hong Kong, the Highlands Construction Plan proposes comprehensive support for Hong Kong in constructing its first CM hospital i.e. The

Chinese Medicine Hospital of Hong Kong (CMHHK), exploring CM service models applicable to overseas region, and leveraging the CMHHK as an opportunity to establish a GBA consortium of CM services and CM hospitals, pooling resources to enhance CM services. The Highlands Construction Plan also proposes establishing a GBA CM training base to cultivate a core group of talents from Hong Kong and Macao, who are capable of inheriting the academic theories and clinical techniques of renowned veteran CM experts and proficient in conducting CM clinical diagnosis and treatment in hospital settings. Furthermore, the Highlands Construction Plan states that the advantages of the GCMTI should be fully utilised to develop and promote internationally recognised CM standard. It also fully supports the Government in establishing a regional linkage mechanism with the Government of the Macao Special Administrative Region and Guangdong Province to jointly take forward the implementation of the work.

In 2021, the State Council issued the *Several Policies and Measures for Accelerating the Characteristic Development of Traditional Chinese Medicine*, proposing to follow the own development laws of CM development, earnestly summarising the experience and practices of CM in preventing and treating COVID-19, addressing existing issues, and make better use of CM's unique features and comparative advantages, as to promote the complementary and coordinated development of CM and WM.

The *Opinions on Further Strengthening Chinese Medicine Work in General Hospitals to Promote Integrated Chinese-Western Medicine Development*, issued by the National Health Commission in 2021, emphasises strengthening CM work in general hospitals and improving systems related to ICWM. This includes enhancing the construction of CM clinical departments and creating new models for ICWM.

In the same year, NATCM, the Publicity Department of the Central Committee of the Communist Party of China, the Ministry of Education, the National Health

Commission, and the National Radio and Television Administration jointly issued the *Implementation Plan of the Action Plan on the Dissemination of Traditional Chinese Medicine Culture (2021–2025)*. This provides programmatic guidance for CM culture dissemination strategy, promoting the integration of CM culture throughout national education, into life experiences and artistic creation, establishing a CM culture dissemination mechanism, and enhancing public cultural awareness of promoting health through CM.

In 2022, the State Council promulgated the *Development Plan for Traditional Chinese Medicine during the 14th Five-Year Plan Period* (the 14th Five-Year Plan). It emphasises adhering to the principle of equal emphasis on CM and WM while upholding the spirit of “Guard the wisdom, Forge the future”, and implementing the major project of revitalisation and development of CM, advancing the Healthy China initiative by leveraging CM's advantages, and strengthening safeguards for public health. The 14th Five-Year Plan is the first five-year plan for CM issued in the name of the General Office of the State Council, reflecting the emphasis on CM development at national level.

In 2022, the NATCM formulated the *Development Plan for the Informatisation of Traditional Chinese Medicine during the 14th Five-Year Plan Period*. It emphasises using informatisation to support the construction of CM service system, with data resources as the key element, business applications as the core, and digitalisation, networking, and intelligence to drive industrial transformation and upgrading, thereby promoting CM modernisation.

Building upon the 14th Five-Year Plan, the *Implementation Plan for the Major Project of Revitalisation and Development of Traditional Chinese Medicine* released in 2023, further proposed intensifying efforts to develop CM health services with a full coverage to life cycle and promoting the synergistic development of CM and WM. This includes significantly enhancing CM's capabilities in major disease prevention, control, treatment and emergency response; piloting the construction of regional CM

preventive treatment centres and implementing CM health promotion projects for key groups of people in conjunction with the Healthy China Action Plan; building CM dominant specialties and optimising CM diagnosis and treatment protocols; strengthening the high level CM talent nurturing project (Qi Huang Project); and implementing CMs industry enhancement and promotion projects.

To meet the needs of development in the new era and better leverage the foundational and leading role of standardisation in promoting high quality CM development, NATCM formulated the *Action Plan for Standardisation of Traditional Chinese Medicine (2024–2026)* in 2024. It aims to harness standards as an engine for new quality productive forces, providing strong support and a foundation for the high quality development and governance of CM. This includes encouraging the establishment of a CM standardisation system, formulating standard for CM services, CMs, CM system, and CM equipment, and promoting the internationalisation of CM standard through compiling foreign-language versions of standards and international standards coordination work.

In 2025, the State Council issued the *Opinions on Improving the Quality of Traditional Chinese Medicine and Promoting the High-Quality Development of the Traditional Chinese Medicine Sector* highlighting the importance of enhancing CMs quality as the foundation and drawing technological innovation as the support, to accelerate the construction of a modern industrial system. It aims to form a high quality development plan for CM industry that places equal emphasis on inheritance and innovation, with reliable quality and strong competitiveness.

In 2025, the National Patriotic Health Campaign Committee issued the *Notice on Incorporating Three Actions Including the Healthy Weight Management Action into the Healthy China Action Plan*. It incorporated the CM Health Promotion Action into the Healthy China Action Plan and held a dedicated launch event to formally commence implementation. The action proposes practical requirements for CM health promotion at three levels: individual and family, society, and government<sup>1</sup>, to better meet the public's multi-level and diverse demands for CM health services.

Important national policy documents on CM development in recent years have comprehensively covered the overall development goals of CM, popularisation of medical services, management systems strengthening, talent nurturing and development, standardisation, informatisation and cultural dissemination, which outline the major direction for national CM development. Various provincial-level administrative units should closely attach to and coordinate with the principles, making appropriate adjustments and implementations based on local conditions, considering the characteristics and advantages of local CM development.

During the formulation process, the Blueprint thoroughly referenced the directions, strategies and objectives outlined in the aforementioned national policy documents. Taking into account Hong Kong's distinctive features on CM-dedicated system<sup>2</sup> and advantages in establishing standard and conducting clinical research etc., the Blueprint positions Hong Kong to contribute to national CM development by leveraging the institutional advantages of “One Country, Two Systems” and promoting the global expansion of CM.

<sup>1</sup> Refers to Mainland government entities

<sup>2</sup> The CM-dedicated system is a unique advantage of Hong Kong. Under the “One Country, Two Systems” framework, Hong Kong has established a robust CM regulatory system, confining the scope of practice of CMPs that they shall practice CM only on the basis of traditional CM. The CM-dedicated system allows CMPs to form a positive complementary and collaborative relationship with doctors under the patient-centred principle and reach their full potential respectively, formulating a CM and ICWM service model distinct from that of the Mainland. As the model connects with the global direction of developing traditional medicine, it enables Hong Kong to promote its CM development outcomes to overseas regions in future. By such, it would facilitate Hong Kong to provide valuable experience to the development of traditional medicine and contribute to the national strategy of CM going global.

# Current Chinese Medicine Development in Hong Kong

The Government is committed to promoting the development of CM and regard it as an integral part of Hong Kong's healthcare system. Following the establishment of the Hong Kong Special Administrative Region, the Government enacted *the Chinese Medicine Ordinance (Cap. 549)* (the Ordinance) in 1999 to define the professional status of Chinese medicine practitioners (CMPs) and the regulatory system for CMs at the legislative level. In the same year, the Chinese Medicine Council of Hong Kong (CMCHK) was established under the Ordinance to implement regulatory measures related to CM and CMs, the Chinese Medicine Regulatory Office (CMRO) of the Department of Health (DH) is responsible for enforcing the Ordinance and providing administrative and professional support to CMCHK. CMRO also oversees public education of CM. The Ordinance clearly defines the practice of CM, laying the legal foundation for the clinical and professional training model of CM-dedicated system in Hong Kong. According to the Code of Conduct for CMPs<sup>3</sup>, CMPs in Hong Kong must not use professional treatment methods covered by ordinances regulating other healthcare professions, making the practice of CM in Hong Kong different from that in the Mainland. To broadly gather and consult opinions from the industry during the policymaking process for CM, the Government established the Chinese Medicine Development Committee (CMDC) in 2013, with members from the CM, CMs, teaching and research, and other healthcare sectors. CMDC advises on CM development approaches by leveraging the distinctive features of CM-dedicated system, and advise the Government on the direction and long-term strategy for promoting the development of CM in Hong Kong. Subsequently, in 2018, the Government established CMU under the former Food and

Health Bureau to strengthen the coordination of overall CM policy development in Hong Kong. The Chinese Medicine Hospital Project Office was also established to advance the establishment of Hong Kong's first CM hospital during the same period. To further promote the development of CM in Hong Kong comprehensively, the Government created a post of Commissioner for Chinese Medicine Development in 2023 in a dedicated manner to strengthen the functions of CMU.

In recent years, the Government has implemented various policies and measures related to CM, establishing its role within Hong Kong's healthcare system. In terms of services, the 2018 Policy Address announced to further integrate CM into the healthcare system through subsidising defined CM services. These include subsidised outpatient services provided at the 18 Chinese Medicine Clinics cum Teaching and Research Centres (CMCTRs), subsidised ICWM services provided by the Hospital Authority (HA) at specific public hospitals and designated hospital sites and a range of subsidised inpatient and outpatient services provided at CMCHK. These initiatives form a comprehensive network of CM services for the public. Regarding primary healthcare development, the Government actively promotes the enhancement of CM elements within the services of the District Health Centres (DHCs) and DHC Expresses (collectively referred to as "DHCs"). These include encouraging registered CMPs to join as the network service providers of DHCs and allowing eligible DHC members with specific clinical conditions to opt for CM services as needed. On the other hand, registered CMPs have long been among the private healthcare professionals eligible to enrol in the Elderly Healthcare Voucher (EHCV) Scheme. As of 2024, registered CMPs ranked second highest among

<sup>3</sup> Including Code of Professional Conduct for Registered CMPs and Code of Conduct for Listed CMPs

14 categories of healthcare professionals in terms of both the number and value of transactions, highlighting the significant engagement of CM services in providing primary healthcare services for the elderly. Along with the service commencement of CMHHK in December 2025, in addition of being the first hospital predominantly providing CM services in Hong Kong, it will also elevate CM services from primary care to secondary and tertiary care. This marks a significant milestone to the local development of CM.

As CM service become increasingly popular in Hong Kong, its role in the healthcare system will expand, so as the range of medical functions to be performed by registered CMPs keeps expanding. To promote patient-centric healthcare services and facilitate citizens to establish a lifelong, comprehensive and individualised electronic health record account capturing essential health data, the Government developed a territory-wide Electronic Health Record Sharing System (eHealth). CM record has been gradually included in the scope of sharable data within eHealth to align with the sustainable development of CM sector. Currently, CM healthcare providers can join eHealth, with patient consent for sharing, registered CMPs who have registered for eHealth can view and share all electronic health records (eHRs) uploaded by other registered CMPs, as well as encounters and appointments, immunisation records, allergies and adverse drug reaction data uploaded by doctors. On the other hand, to promote collaboration between registered CMPs and other healthcare professionals, the Legislative Council passed relevant amendments to the *Allied Health Professionals Ordinance* in 2025, enabling specified allied health professionals

(including physiotherapists, occupational therapists, radiographers and medical laboratory technologists) to accept referrals from registered CMPs. In recent years, the CM sector has also actively participated in responding to public health incidents and assisting in coping with seasonal demand surge for medical consultation. These include responding to invitations from the Government to extend consultation hours during festivals and long holidays and providing information for the Government to upload to official online information channels, enabling the public to timely receive professional CM support.

Talent is a crucial cornerstone for the sustainable development of CM. The development of CM talent cultivation in Hong Kong has gradually matured. Currently, three universities offer the University Grants Committee (UGC) funded six-year undergraduate CM programmes. Graduates who qualify as registered CMPs after passing the CMPs Licensing Examination (Licensing Examination) may choose to serve in CMCTRs for a three-year post-registration training. To further enhance the clinical skills and professional level of local registered CMPs, CMCTRs also offer various scholarship schemes to subsidise registered CMPs and CMs professions at different levels for advanced studies in the Mainland. They also regularly invite Mainland experts to Hong Kong to provide training, enhancing clinical skills and professional standard of local registered CMPs. Currently, the CM sector also has abundant training resources and various training participation channels. Apart from the diverse training programmes offered by the 27 Continuing Education in Chinese Medicine (CME) Programme Providers accredited by the Chinese Medicine Practitioners Board (CMPs Board) under CMCHK [1], the Government has

also jointly organised Hong Kong CM Talent Training Programme with NATCM since 2023. Furthermore, the Government encourages local CMPs to participate in Mainland's CM talent cultivation and award schemes such as Qi Huang Scholars and Qi Huang Young Scholars, building a local pool of top-tier CM talents through professional exchange and training between the Mainland and Hong Kong.

On the front of CMs, Hong Kong has established a robust regulatory framework whereby all Chms and pCms on the market are regulated under the Ordinance, with strict requirements on safety, quality and efficacy of pCms. To uphold the quality and safety of pCms, the Government implements a voluntary good manufacturing practice (GMP) system for local pharmaceutical enterprises. On establishing standard for Chms, DH has published 11 volumes of *Hong Kong Chinese Materia Medica Standards* (HKCMMS), establishing reference standard for 344 types of Chms. The research findings of HKCMMS have been cited multiple times by overseas institutions and CMs research articles in international journals. To enhance the testing and research level of CMs, the Government established GCMTI in 2017, specialising in testing and research of CMs, to develop internationally recognised reference standard for the safety, quality and testing methods of CMs. The permanent premises of GCMTI also commenced operation by end of 2025, alongside CMHHK as Hong Kong's flagship CM institutions.

To support the sector holistically, the Government established the Chinese Medicine Development Fund (CMDF) to promote comprehensive, high quality and high level CM development. A total of \$1 billion was injected into CMDF since its launch in June 2019. In past years, CMDF has rolled out over 10 funding schemes covering areas of training, research, public promotion, industry development and quality enhancement. Responding to industry's needs and aligning with policy development, CMDF continues to introduce new measures and rolls out enhancement initiatives, including establishing the Strategic Theme Commissioned Project Funding Programme to commission organisations to conduct large-scale training, publicity and research projects on strategically priority themes.

On cultural promotion, the local CM sector actively organises diverse promotional activities. In 2024, the Government organised the first Hong Kong CM Culture Festival, deepening public interest and understanding of CM, with a view to promote its inheritance. Additionally, CMDF also supports various CM promotional projects, such as developing teaching and learning resources kits for primary school and secondary school students, raising the fund ceiling of CM public promotional projects and encourage and support organisations to hold regional and international CM conferences, exhibitions and events in Hong Kong to further popularise CM.

Detailed current status in Hong Kong of the five key domains, namely CM Services, CM Profession, CMs Development, Cultural Inheritance and Go Global, will be elaborated in respective sections of the Blueprint.

# Vision of Chinese Medicine Development in Hong Kong

Inheriting the wisdom of Chinese medicine, leveraging the Motherland's development experience and resources, and utilising Chinese medicine to provide Hong Kong citizens with higher quality and more comprehensive healthcare services for better health outcomes, while establishing Hong Kong as a bridgehead for the global expansion of Chinese medicine.

The Government will implement various policy measures of the Blueprint in accordance with the following principles:

## Supporting the national development of CM

- CM is a treasure of Chinese civilisation. The nation has been committed to promoting CM inheritance, innovation and development to accelerate the advancement of the Healthy China initiative
- Under the national deployment for developing new quality productive forces, Hong Kong will fully cooperate in fostering the standardisation and modernisation of CM, contributing to the national development of CM
- Hong Kong fosters an excellent environment for promoting the comprehensive, high quality and high level development of CM, including high calibre clinical and research talent, supporting policy measures, and sustained public resource allocation. Hong Kong will advance the deeper integration of CM into the healthcare system, respond to national policies, and utilise CM to support the building of a healthy Hong Kong

## Guard the wisdom, Forge the future

- Position Hong Kong as a hub for inheriting the theoretical and practical expertise of CM, leverage the institutional advantages of CM – dedicated system, adhere to the own development laws of CM development. Promote its comprehensive, high quality and high level advancement across multiple domains, including CM healthcare services and interprofessional collaboration, education and training, scientific research and innovation, quality enhancement, and cultural promotion
- Pursue innovative breakthroughs in CM modernisation through the application of various technologies such as clinical research, big data analysis and artificial intelligence. Actively foster cross-institutional and interprofessional cooperation and research to amplify its value for population health

## Enhancing local healthcare services by amplifying the advantages of CM

- Considering the actual circumstances of Hong Kong, capitalise on the unique advantages of CM and ICWM services to effectively address the healthcare needs of the community with public health oriented approach. Strengthen the application of CM across all levels of healthcare and promote linkages and cooperation between CM and other healthcare professions
- Popularise CM knowledge to facilitate citizens to make appropriate choices for disease prevention and treatment, guiding citizens to choose appropriate healthcare services based on disease type and condition, thereby optimising the use of healthcare resources
- Empower the CM sector and enhance the professional standard of CMPs and CMs personnel, and continuously optimising industry standard

## Serving as a bridgehead for the global expansion of CM

- Hong Kong's healthcare service standards are at the forefront globally, possessing advantages in its healthcare system, regulatory framework, standard setting, clinical research and language. In the future, we aspire to utilise Hong Kong's strengths to serve the nation's needs, playing the role of a window connecting with the world and exporting the high level traditional medicine service models and products to the world
- Through formulating and promoting clinical practice guidelines (CPGs) and clinical pathways (CPs) with CM characteristics to overseas, actively participating in the formulation of international standard setting work for traditional medicine, encouraging more large-scale international or regional CM conferences and events to be held in Hong Kong, and building an international cooperation platform for traditional medicine, so as to establish Hong Kong as a platform for CM's global expansion, assisting in enhancing the nation's discourse power and influence in the international field of traditional medicine

# Overall Goals

**Goal 1** Enhancing Clinical Services Excellence

---

**Goal 2** Establishing an Interprofessional Service System

---

**Goal 3** Leading Chinese Medicine Professional Development

---

**Goal 4** Enhancing Chinese Medicines Quality and Standard

---

**Goal 5** Contributing to the Establishment of International Standard for Chinese Medicines

---

**Goal 6** Driving Chinese Medicine Innovation in Research and Industry

---

**Goal 7** Promoting Culture of Chinese Medicine

---

**Goal 8** Facilitating the “Go Global” of Chinese Medicine

# Chinese Medicine Services

# Chinese Medicine Services

## Current Status

### 1. Participation of CM in Healthcare System of Hong Kong

#### 1.1 Models of CM services in Hong Kong

CM is an integral part of healthcare system in Hong Kong. Citizens may choose CM, WM, or ICWM services. CM has been trusted by the citizens and its efficacy and advantages were especially experienced during the COVID-19 pandemic.

As of November 2025, there were a total of 10 842 CMPs, including 8 797 registered CMPs, 27 CMPs with limited registration<sup>4</sup> and 2 018 listed CMPs<sup>5</sup> in Hong Kong. CM services in Hong Kong are primarily community-based rather than hospital-based, with over 90% of CMPs practising in the private sector. Services are provided by private or chain CM clinics, clinics of non-profit organisations, CMCTRs and other organisations. Between 2020 and 2022, survey conducted by the Government on the type of medical practitioners of persons consulted during the 30 days before enumeration revealed an upward trend in consultation of private CM services from 21.4% to 28.4%, reflecting increasing provision of CM services in Hong Kong. It is estimated that the private market provided about 16 million CM

outpatient attendances in 2024, establishing a robust foundation for CM services at the community level.

Under current legislation, only registered and listed CMPs may practise CM. DH has strengthened public education and promotion, urging citizens to verify the professional qualifications of service providers before receiving CM services and to consult only regulated healthcare professionals.

#### 1.2 Services at CMCTRs

Since 2003, the Government has established and subsidised CMCTRs in all 18 districts across the city to facilitate the choice of citizens on CM services, while providing clinical training opportunities for local CM students and graduates. Each CMCTR is operated by HA, non-governmental organisations (NGOs), and local universities with Schools of CM (Hong Kong Baptist University (HKBU), The Chinese University of Hong Kong (CUHK), and The University of Hong Kong (HKU)) under the tripartite collaboration model. Since 1 October 2023, the annual quota of government-subsidised outpatient CM services provided by the CMCTRs has increased by over 30% from about 600 000 to 800 000. In 2014, the total service attendance (including government-subsidised and non-government-subsidised CM outpatient services, ICWM services and Civil Service CM Clinic services) of CMCTRs was about 1.6 million.

<sup>4</sup> The Ordinance establishes a system of Limited Registration of CMPs to facilitate the engagement of CM experts in performing clinical teaching and research in CM in the specified institution. Educational and scientific research institutions approved by the CMPs Board of CMCHK may apply, on behalf of the CM experts under their employment, for CMPs with limited registration for the conduct of CM clinical teaching or research. CMPs with limited registration can only be employed by educational or scientific research institutions approved by CMPs Board and engage in clinical teaching and research work in CM. They are not permitted to engage in private practice. The registration is valid for a maximum of one year.

<sup>5</sup> The Ordinance provided for transitional arrangements for the registration of CMPs. Any CMP who was practising CM in Hong Kong on 3 January 2000 could apply to CMPs Board for listing as a listed CMP within the application period specified by CMPs Board (the application period was closed on 30 December 2000). By the end of 2002, CMPs Board had completed the assessment on the practising experience and academic qualifications of all listed CMPs to determine their alternative qualifying requirements for registration. In accordance with the Ordinance, a listed CMP who has yet to be registered may continue to practise in Hong Kong by the title of listed CMP under the transitional arrangements, until a date to be promulgated by the Secretary for Health in the Gazette. As at the end of November 2025, there were 2,018 listed CMPs who had yet to be registered under the transitional arrangements.

### 1.3 ICWM services of HA

To explore and gather operational experience in ICWM and CM inpatient services for formulating a roadmap for the future development of CM, the Government commissioned HA to launch the time-limited ICWM Pilot Programme in 2014, being the first time introducing CM services into public hospitals. The Programme was implemented by phases at designated hospitals under HA to provide ICWM treatment to inpatients of designated disease areas. With the development of services, HA subsequently regularised the Pilot Programme in early 2023 and further expanded the services to more hospitals and conditions for which CM demonstrates distinct advantages, with a view to leveraging the strengths of CM and ICWM. Under the framework of ICWM services, ICWM team will collaborate in formulating clinical treatment protocols for conditions for which CM and WM demonstrate distinct advantages, jointly assess the suitability of inpatients for receiving CM treatment, conduct ward rounds and consultations together, and discuss cases regularly, thereby fostering interprofessional collaboration between CMPs and other healthcare professionals. As at September 2025, ICWM services have been expanded to 26 public hospitals under HA, with designated hospital service points increased to 67, covering six designated disease area programmes (including stroke care, musculoskeletal pain management, cancer palliative care, pilot programmes in cancer care, respiratory care and knee osteoarthritis care), continuing to practise interprofessional service collaboration integrating Chinese and Western medicine while providing patients with an additional treatment option.

### 1.4 CMHKK

In the *Chief Executive's 2014 Policy Address*, the Government announced that a site at Pak Shing Kok Road in Tseung Kwan O had been reserved for developing the first CM hospital in Hong Kong. Subsequently, in the *Chief Executive's 2017 Policy Address*, the Government announced the decision to finance the construction of a CM hospital, with funding approved by the Legislative Council Finance Committee in 2021. The CM hospital is constructed by the Government and was officially named as CMHKK on 9 October 2024. CMHKK commences services starting from December 2025, marking a significant milestone for the development of CM in Hong Kong.

CMHKK is a hospital controlled by the Government. Currently, HKBU is the contractor for operation of the hospital and has incorporated a company limited as the operator to manage, operate and maintain the hospital. As a flagship CM institution in Hong Kong, it will undertake five key missions, including the provision of Government-subsidised and market-oriented clinical services, training and education, research, collaboration and creating health values. CMHKK will also take on the role of a “change driver” to work closely with the CM sector and stakeholders to promote the overall development of CM at the local, GBA and international levels.

Regarding clinical services, CMHKK operates under an interprofessional collaboration model. In addition to providing pure CM services, it will develop services with CM playing the predominant role and ICWM services, covering primary, secondary and tertiary services. It will provide quality CM inpatient, day-patient, outpatient and community services to offer patients comprehensive and appropriate CM

treatment. Equipped with 400 beds, CMHHK offers six specialised CM services, namely Internal Medicine in CM, External Medicine in CM, Gynaecology in CM, Paediatrics in CM, Orthopaedics and Traumatology in CM, and Acupuncture and Moxibustion in CM. It will also strategically develop special disease programmes capitalising on the strengths of CM treatment, covering episodic, chronic diseases, complex diseases, convalescence, rehabilitation services, palliative care, health maintenance, preventive care and other disease categories to foster the development of specialised CM services at CMHHK. Through CPGs based on evidence-based medicine principles and CPs facilitating multi-disciplinary collaboration, CMHHK's interprofessional healthcare team will collaborate effectively to enhance clinical outcomes and develop a Hong Kong model of ICWM with CM playing the predominant role.

Regarding training and education as well as research, CMHHK will collaborate with academia and other institutions to provide clinical training and learning opportunities for CM and WM healthcare professionals. It will establish a Clinical Trial and Research Centre to conduct high level clinical trials to promote CM efficacy evaluation and pCms development. CMHHK will forge partnerships with healthcare and non-healthcare sectors and engage in exchanges with Mainland and overseas counterparts to facilitate service development, patient flow, knowledge flow and talent flow. It will also enhance citizen's understanding of CM, the adoption of CM approaches in daily living and the use of CM services in maintaining good health to promote health values.

## 1.5 EHCV Scheme

Through EHCV Scheme, the Government provides eligible Hong Kong elderly persons with an annual voucher amount of \$2,000 to subsidise their use of private primary healthcare services provided by 14 categories of healthcare professions, including CMPs. As at November 2025, a total of 4 733 CMPs (representing approximately 53.6% of the total number of registered CMPs) participated in EHCV Scheme. Between 2021 and 2024, the amount claimed by the elderly persons for using CM services under EHCV Scheme increased year-on-year. During the period from January to November 2025, the amount claimed was nearly \$1.209 billion, the second highest among the healthcare professions under EHCV Scheme.

## 2. Policy Directions for CM Services in the Chinese Mainland

In 2022, the State Council promulgated the 14th Five-Year Plan, setting out development goals, tasks and key measures to promote high quality CM development. The document upholds equal emphasis on CM and WM, takes forward the integration of CM with modern science, facilitates complementary and coordinated development of CM and WM, as well as formulates and promotes diagnosis and treatment protocols and CPs for conditions for which CM demonstrates distinct advantages and ICWM. In 2023, the State Council issued the *Implementation Plan for the Major Project of Revitalization and Development of Traditional Chinese Medicine*, establishing a CM service system that amplifies strengths, addresses weaknesses and makes up for shortcomings, strengthening a number of national services for specialised and special diseases which CM demonstrates distinct advantages, and optimising diagnosis and treatment protocols.

The Highlands Construction Plan highlights the need to advance ICWM collaboration, incorporating CM into multidisciplinary diagnosis and treatment systems to form and promote ICWM protocols.

With the staunch support from the country, Hong Kong will further integrate into the national CM development landscape, advancing Hong Kong's pure CM and ICWM service models as international reference models to benefit more patients globally.

## 3. Development of CM Services in Hong Kong: Strengths, Opportunities and Challenges

With a long history and wide public recognition in Hong Kong, CM possesses significant strengths supported by a robust regulatory framework and existing infrastructure. The Ordinance provides a clear definition of CM practice, establishing the legal foundation for Hong Kong's pure CM clinical and professional education model. Under the code of professional conduct for CMP, CMPs in Hong Kong shall not use other professional treatment methods as regulated by laws concerning those other medical and healthcare professions, resulting in a CM practice model distinct from that of Mainland. However, there remains room for improvement in traditional knowledge inheritance, application of clinical evidence, interprofessional collaboration and community engagement. Facing the increasing demand for healthcare services brought about by an ageing population, the key opportunities lie in technological advancement and internationalisation of service models, whilst challenges such as unclear positioning of CM services and lack of standard-setting mechanisms have to be addressed. An analysis of the current status of CM services in Hong Kong is detailed in Table 1.1.

**Table 1.1 : Analysis of the current status of CM services in Hong Kong**

## Strengths

CM is widely accepted and trusted by the public

The regulatory framework for CMPs and CMs is robust

The Government supports CM service development with policy and resources, including the provision of CM outpatient and ICWM services

CMCTRs provide a foundation for CM outpatient services and future development of primary healthcare

HA's ICWM services demonstrate the feasibility and advantages of integrating CM into inpatient settings, fostering collaboration between CMPs and other healthcare professionals

The broad coverage of community-based CM service foundation ensures extensiveness and accessibility of CM outpatient services

## Opportunities

The CM services shall be tailor-made to address the conditions for which CM demonstrates distinct advantages so as to cater health demand from different populations

The CM services shall leverage technological advantages by conducting research using modern methods and technologies, electronic health system data and artificial intelligence to continuously improve the service quality

Hong Kong boasts high level WM services and HA has a vast eHRs database of CM and WM, facilitating the development of ICWM services and related big data research

CMHHK shall lead CM services in Hong Kong entering from primary to secondary and tertiary healthcare, while providing broader disease spectrum and patient types to promote CM research

## Challenges

The synergistic application of modern clinical evidence and traditional CM theories should be strengthened to ensure that the formulated CPGs meet the needs of modern service development, whilst retaining traditional CM theories and treatment characteristics

The participation of community CMPs' in primary healthcare service development should be further promoted

The secondary and tertiary healthcare services in CM and related research should be developed

The standard procedure and process for interprofessional collaboration CPs has not been formulated to further enhance the quality and comprehensiveness of CM services

The service model innovation and collaboration among CM and WM healthcare institutions should be further promoted to foster cross-sectoral collaboration

In response to the analysis in Table 1.1, Hong Kong's CM services will **leverage the Mainland's profound experience in developing CM services alongside its own world-leading strengths in modern healthcare to enhance evidence-based CM services within Hong Kong's healthcare system, while preserving the essential features**

**of CM. Furthermore, it will promote robust interprofessional collaboration to maximise benefits for the public.**

Relevant goals and actions for CM services are listed below (see Table 1.2):

## Table 1.2 : Overview of goals and actions for CM services

### Goal 1: Enhancing Clinical Services Excellence

**Action 1.1** Defining the role of Chinese medicine services within the healthcare system

**Action 1.2** Improving the quality and clinical effectiveness of Chinese medicine services

**Action 1.3** Upgrading Chinese medicine services through technological empowerment

### Goal 2: Establishing an Interprofessional Service System

**Action 2.1** Deepening interprofessional collaboration mechanisms for Chinese medicine services

**Action 2.2** Integrating into the healthcare system fully and fostering cross-institutional collaboration

**Action 2.3** Strengthening the role of Chinese medicine in primary healthcare



## Goal 1: Enhancing Clinical Services Excellence

### Action 1.1

#### Defining the role of Chinese medicine services within the healthcare system

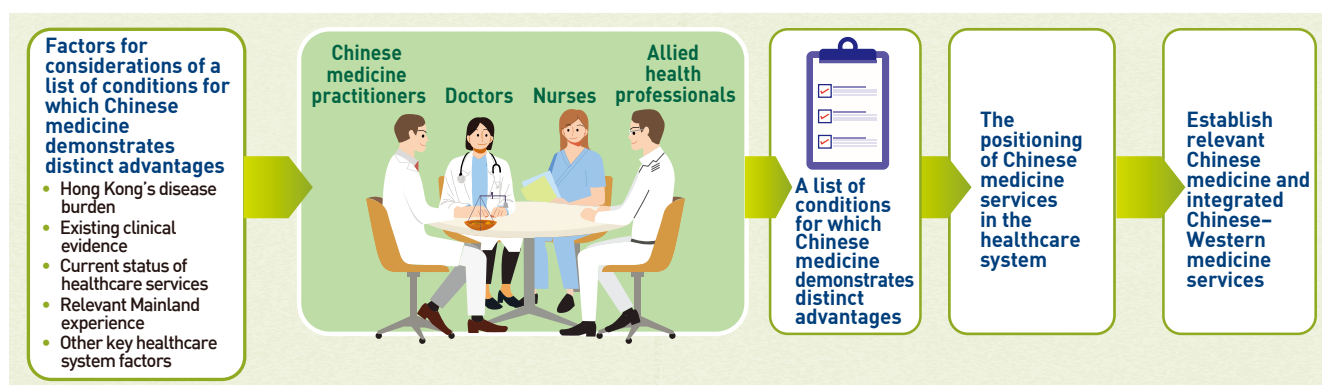
#### Highlighting key areas of advantages in CM and strategic planning for service development

Defining the role of CM services across all healthcare levels is essential for a deeper integration into Hong Kong's healthcare system. To effectively leverage CM's strengths, interprofessional forums comprising stakeholders (including but not limited to CMPs, doctors, nurses and allied health professionals)

will first be established to jointly formulate a list of conditions for which CM demonstrates distinct advantages and significant effectiveness (the List) (Figure 1.1), such as primary low back pain, migraine, knee osteoarthritis, post-stroke sequelae, or cancer. When formulating the List, consideration of Hong Kong's disease burden, existing clinical evidence, current healthcare service status, relevant Mainland experience and other key healthcare system factors will be comprehensively assessed. The List will facilitate comprehensive planning of the deployment strategies for CM services across all healthcare levels, enabling the development of CM services tailored to Hong Kong's needs and healthcare environment for designated conditions with for which CM demonstrates significant effectiveness, thereby alleviating healthcare burden.

Figure 1.1

#### Formulation of a list of conditions for which Chinese medicine demonstrates distinct advantages



Formulation of the List is merely the first step; the key lies in translating it into actionable service models. Corresponding CM service programmes will be developed across primary, secondary and tertiary healthcare according to different health needs with varying complexity across appropriate service settings like outpatient, day-patient and inpatient care. The levelled, setting-specific approach ensures patients receive continuous and appropriate treatment. For instance, primary low back pain is highly prevalent in the community and impacting quality of life. Its service development should be focused on outpatient settings within primary healthcare. Community CM clinics will serve as first contact points, providing core CM interventions like acupuncture, manual Tui-na, and oral / external CMs applications, coupled with health education on back exercises and daily posture correction to relieve pain and prevent recurrence. The strength of such services lies in community accessibility, enabling early intervention to prevent progression to chronic conditions.

For conditions requiring closer monitoring or interprofessional collaboration, such as moderate-to-severe knee osteoarthritis, service settings shall be elevated to day-patient CM services or specialised CM services and special disease programmes outpatient clinics within secondary healthcare. At this level, CMPs will collaborate closely with doctors, physiotherapists and other healthcare professionals. Day-patient CM centres will offer comprehensive treatments like acupuncture, oral CMs and CMs fumigation, allowing patients to return to the community after intensive same-day treatment. Collaboration with doctors and physiotherapists enables joint assessment of condition changes and timely discussion of advanced treatment referrals for suitable patients, forming complementary care.

For the most complex, severe or long-term management conditions such as post-stroke rehabilitation, cancer treatment or palliative care, tertiary healthcare with inpatient settings becomes crucial. Within CMHHK, CM-predominant or ICWM inpatient treatment plans will be provided for such patients. Taking stroke rehabilitation as an example, the inpatient environment allows intensive, multimodal CM interventions like daily acupuncture, CM decoctions and emotional therapy support. The healthcare team comprising CMPs, doctors, physiotherapists, occupational therapists, clinical psychologists and social workers will formulate personalised rehabilitation plans. This model provides 24-hour medical monitoring and support, particularly suitable for unstable conditions or those requiring concurrent therapies. Concurrently, HA's ICWM services will provide WM and CM treatment for inpatients to manage conditions and expedite recovery.

To realise the precision-deployed and seamlessly connected service system which is tailored to disease characteristics and patient needs across healthcare levels and settings, the indispensable supporting framework of subsequent actions detailed in the following chapters are required. In summary, with the orientation of the List, systematic development of corresponding programmes across different settings in primary, secondary and tertiary healthcare, supported by interlinked actions from standard-setting to collaboration mechanisms, will progressively establish a structurally complete, operationally efficient and patient-centred CM service system.

## Action 1.2

### Improving the quality and clinical effectiveness of Chinese medicine services

#### Formulating CM CPGs by integrating modern clinical research and traditional classical wisdom

Evidence-based medicine is the conscientious, explicit and judicious use of current best evidence in making decisions about the care of individual patients [2]. Implementation of evidence-based medicine requires healthcare professionals to integrate research evidence, clinical experience and patient preferences into clinical practice. This principle plays a critical role in clinical decision-making and significantly provides directions to policy formulation, practice models and research directions for global traditional medicine. The World Health Organization (WHO) *Global Traditional Medicine Strategy 2025–2034* (the Strategy) explicitly emphasises the need to strengthen the evidence base to facilitate the integration of traditional medicine services into healthcare systems.

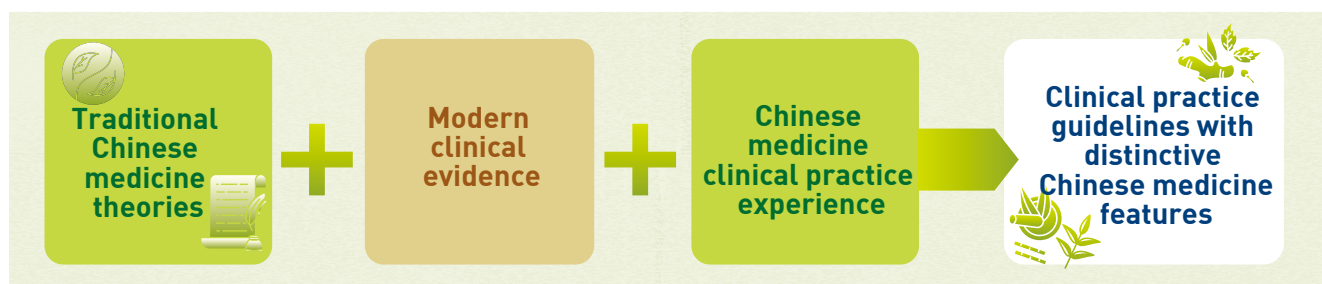
#### Development of special diseases CPGs for CM and ICWM

The 14th Five-Year Plan prioritises enhancing clinical efficacy. With increasing clinical studies supporting the effectiveness and safety of CM treatments, conducting systematic reviews to consolidate the scientific evidence is the first step in strengthening CM's evidence base. Systematic reviews may encompass clinical research outcomes from randomised controlled trials and other studies, alongside best practice recommendations from Mainland CM professional bodies and healthcare institutions.

Conclusions from systematic literature reviews will provide a vital foundation for developing CPGs with distinctive CM features. The next step involves exploring the organic integration of modern clinical evidence with traditional CM theories and rich CM clinical experience, synthesising diverse forms of expertise within the CPGs for CMPs' reference (Figure 1.2) and application in relevant service development. Where existing evidence and expertise remain insufficient, related analysis results will help prioritise research areas, with the prioritising funding from CMDF for supporting studies on conditions for which CM demonstrates distinct advantages to generate high quality clinical evidence in evidence-weak domains. Concurrently, a dynamic update mechanism for CPGs will ensure content enhances with the latest research findings and clinical needs.

Figure 1.2

#### Formulation of clinical practice guidelines with distinctive Chinese medicine features



### Development of CPGs for herb-drug interaction

A CM service user experience survey conducted by HHB in 2025 (3 661 citizens successfully interviewed) showed that approximately 40% of CM service users had experience of concurrent use of oral CMs and Western medicines (WMs); the percentages of concurrent use within the past month and 12 months before the survey were 32.7% and 38% respectively. Therefore, developing CPGs for herb-drug interaction will effectively assist healthcare professionals in addressing related issues, promote the rational use of CMs and WMs, enhance patient safety and healthcare quality.

### Action 1.3

## Upgrading Chinese medicine services through technological empowerment

### Digitalising and sharing of CM healthcare information

Since 2003, CMCTRs have installed the Chinese Medicine Information System developed by HA to enable electronic management of CM medical records, also providing a foundation for big data research in CM. The Government is committed to advancing digitalisation of CM healthcare information and promoting adoption of

eHealth among CMPs. Since March 2022, CMPs participating in eHealth may view and share CM service-related clinical records upon obtaining patient consent for data sharing. The *Chief Executive's 2025 Policy Address* proposed further expanding the scope of sharable data for CMPs to WM data on eHealth progressively as CMHKK commences service in phases from December 2025, to better meet the practical clinical needs of related clinical services, thereby assisting diagnosis and treatment, and enhancing quality and efficiency of healthcare.

### Supporting clinical big data research in CM and WM to facilitate research advancement

HA boasts an extensive and highly standardised medical database. Applying big data analytics and artificial intelligence algorithms will transform the extensive CM and WM data within HA's eHRs and eHealth into practical knowledge which would serve as a reference for CM service providers' decision making. CMDF will fund research collaborated by CMHKK and universities on eHR-related data, mining new evidence from big data to evaluate the safety and effectiveness of CM services, so as to optimise service delivery. CMDF will also support healthcare professionals and researchers in training and education to develop and enhance research skills related to eHRs data in CM.



## Goal 2: Establishing an Interprofessional Service System

### Action 2.1

### Deepening interprofessional collaboration mechanisms for Chinese medicine services

### Developing CPs to facilitate interprofessional collaboration

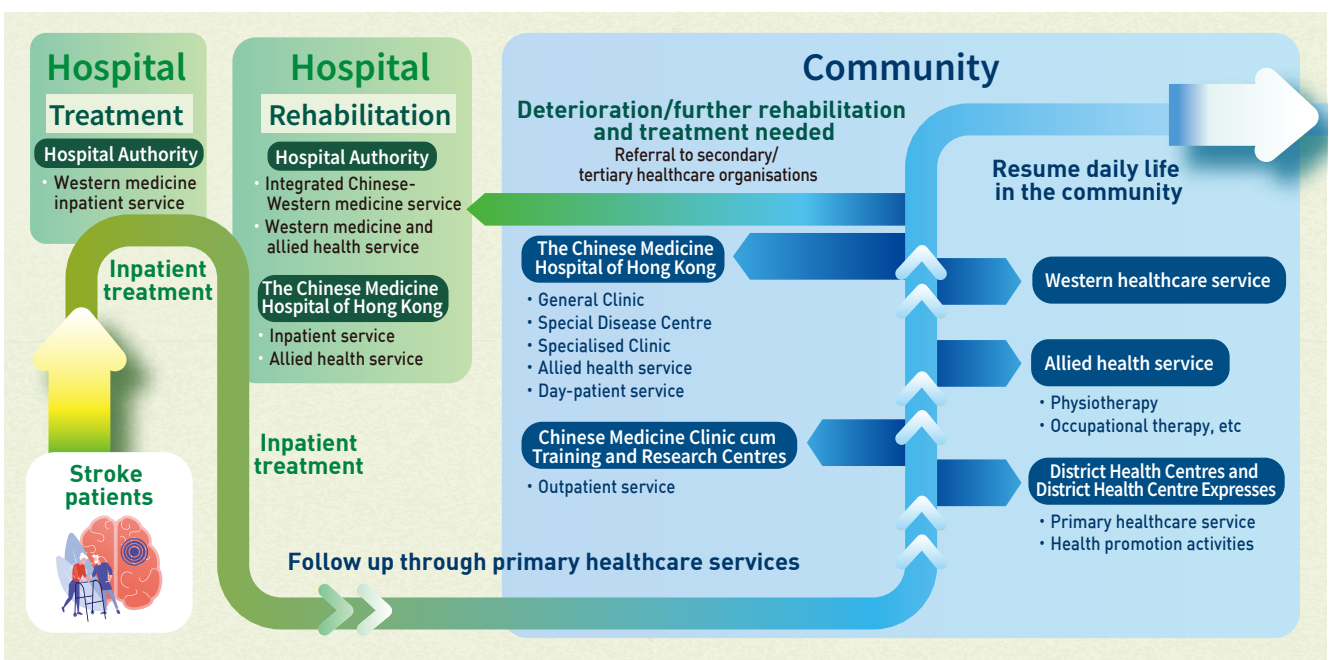
CPs are generally defined as structured care plans designed for specific patient groups within a defined timeframe to promote interprofessional shared decision-making and coordinate treatment processes. CPs enable the translation of CPGs (e.g., those formulated under Action 1.2) into clinical treatment plans within a healthcare institution to optimise service delivery for patient cohorts with specific diagnoses or undergoing defined

treatment procedures. This enhances clinical service effectiveness and efficiency, delivering more comprehensive treatment to patients.

CPGs for CM service programmes in primary healthcare must be refined into specific operational procedures through CPs. This includes developing detailed CM diagnosis and treatment protocols for specific patient types; determining the timing for CM and WM interventions, establishing mechanisms for CMPs to refer patients for diagnostic imaging or laboratory tests services, creating bidirectional referral mechanisms between CMPs and allied health professionals (e.g. physiotherapists, occupational therapists), nurses, or social welfare professionals; setting documentation requirements related in eHRs; and defining service outcome evaluation processes. These specifications are critical for ensuring healthcare service quality and consistency (Figure 1.3).

Figure 1.3

### Using clinical pathways to facilitate interprofessional and cross-organisation collaboration — Stroke as an example\*



\*Suitable clinical pathway shall be formulated based on the actual needs of the patients

CPs, on one hand, implement mechanisms for interprofessional collaboration, and on the other hand, promote vertical and horizontal integration of healthcare services. As such, CPs play a pivotal role in fostering collaboration CM and WM services across different institutions (see Action 2.2) and enhancing teamwork among healthcare professionals (see Action 2.3).

### Promoting the application of CPGs and CPs

Before the implementation of CPGs and CPs, stakeholders will be extensively consulted to identify facilitators and barriers related to real world implementation and compliance. Targeted implementation strategies will be formulated to enhance adherence among CMPs and other healthcare professionals. A mechanism for regular review and update of CPGs and CPs will be established to ensure continuous optimisation based on the latest scientific evidence and practical experience.

## Action 2.2

### Integrating into the healthcare system fully and fostering cross-institutional collaboration

#### Establishing a seamless referral network to enhance coordination and continuity of CM and WM services

Horizontal integration refers to collaboration among healthcare institutions at the same level. In Hong Kong, the primary healthcare services could be integrating with community CM clinics, CMCTRs, DHCs (which act as the role of coordinators and case managers of primary healthcare services), and Family Medicine Clinics of HA, or coordinating collaboration between HA and CMHHK on the provision inpatient and day-patient services. Through CPs, such collaboration will provide patients with more comprehensive services and an enhanced care experience.

Vertical integration refers to cross-tier strategic collaboration among institutions providing primary, secondary and tertiary healthcare. For example, primary healthcare professionals (including CMPs in the community) will use CPs to bridge or refer patients to inpatient or day-patient services at CMHHK (Figure 1.4). This model strengthens the continuity of care, promotes effective collaboration among healthcare professionals across different treatment stages and improves patients' satisfaction.

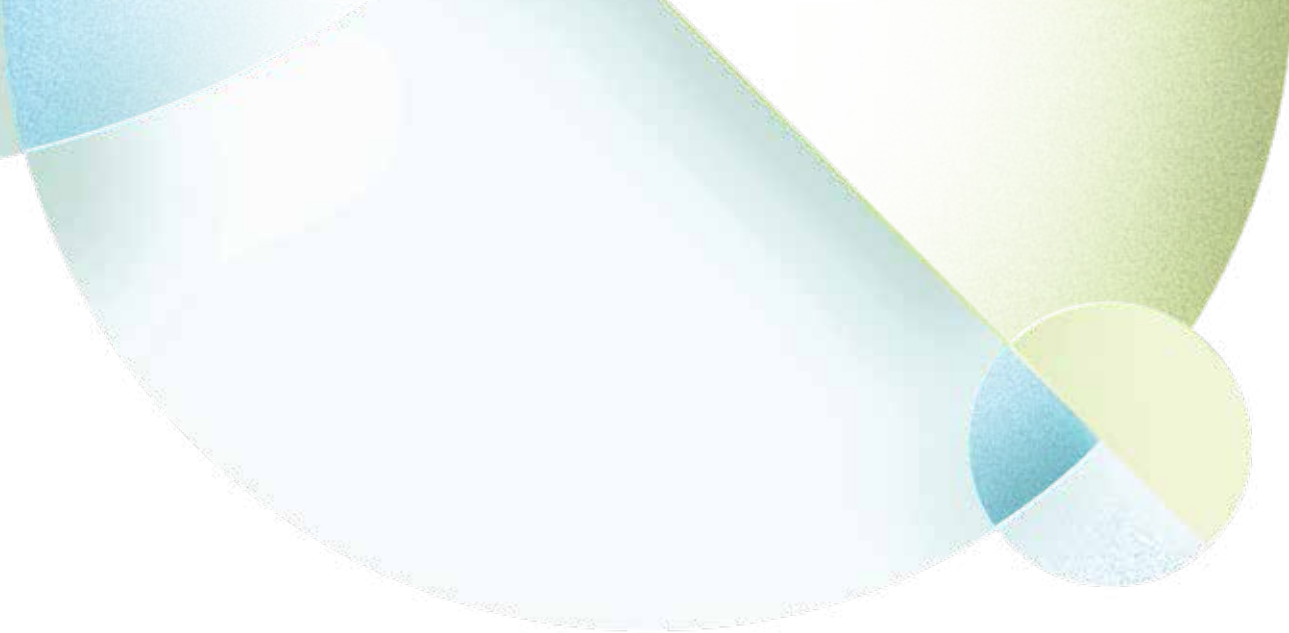
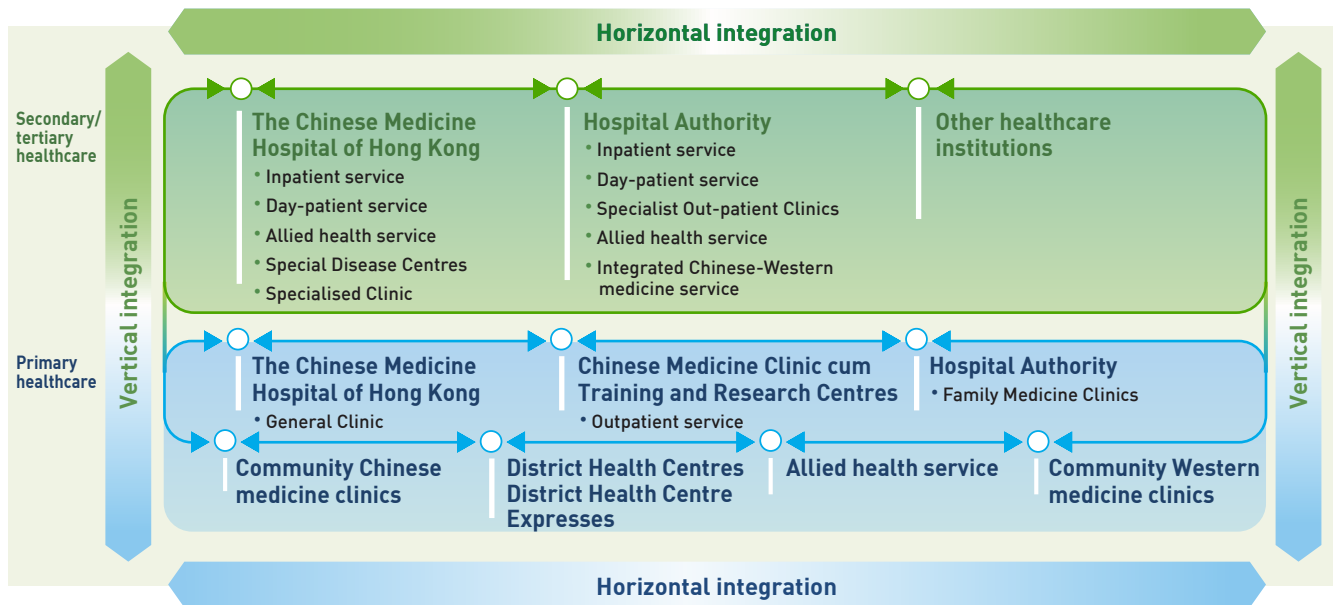


Figure 1.4

### Horizontal and vertical integration



The Government will comprehensively promote CM service integration. HA, the Primary Healthcare Commission (PHCC), and CMHKK will establish referral mechanisms through horizontal and vertical integration. To achieve the objective of Action 2.2, it is essential to further strengthen advantages of existing institutions, fostering collaboration and innovation among various institutions. The positions and roles of various institutions in advancing CM services will be elaborated in the following paragraphs.

## Promoting the role of CMHKK on standard setting and enhancement

CMHKK will collaborate with local, Mainland and international partners to jointly establish innovative standards and platforms for CM services and gather feedback from collaborative partners to make continuous enhancement. CMHKK's work will encompass several key areas relating to the actions set out in the Blueprint:

# 1

### Developing specialised CM services and special disease programmes

Leading or assisting in the formulation of CPGs that integrate clinical research evidence with traditional CM theories (see Action 1.2).

# 2

### Establishing interprofessional collaboration models

Developing corresponding CPs and interprofessional collaboration models for different disease conditions and service settings (see Action 2.1).

# 3

### Building an assurance system for CM services in terms of clinical governance quality and safety

Innovating clinical governance models and a quality and safety assurance mechanisms for CM services.

# 4

### Promoting knowledge translation and dissemination with continuous optimisation

Collaborating with HA, CMCTRs, DHCs and other relevant institutions to transform standards and achievements for wider adoption to CM sector, while refining results and quality based on feedback from collaborative partners.

# 5

### Advocating recognised CM service models to the insurance industry

Fostering active dialogue with the insurance industry to deepen their understanding of CM service models, leveraging existing experience in designing health insurance products related to CM services, and facilitating the development of more health insurance products covering CM services.

# 6

### Initiating the development of research information management of CM clinical trial

Enhancing research information management, including research project management and translational application management, while facilitating the implementation of multicentre clinical trials in CM.

## **Deepening the development of ICWM services within HA**

Building on existing services, HA will develop and strengthen ICWM services under a framework primarily led by WM with CM taking a complementary role. Starting from conditions where CM demonstrates distinct advantages and considering the needs of specific patient types, HA will assess the potential for CM interventions, strategically select suitable disease areas for pilot programmes, and expand ICWM services to more public hospitals following feasibility evaluation. HA will also explore extending service coverage across different healthcare settings such as inpatient, day-patient centres, ICWM clinics and progressive extension of service coverage across different levels of healthcare. HA will continue to collaborate with CMCTRs and CMHHK to promote service innovation and sustainable development, while leveraging the rich experience from Mainland to deepen cross-boundary exchanges and ensure patients continue to receive high level of CM diagnosis and treatment.

## **Strengthening the response system of CM for public health emergency preparedness**

CM has been widely recognised for its efficacy in managing infectious diseases such as influenza and COVID-19. To better formulate contingency CPGs and CPs for incorporating CM in response to pandemic and other public health emergencies, relevant bureaux, departments and institutions will collaborate to strengthen professional coordination, information sharing and CM sector-wide mobilisation capabilities. Concurrently, the cooperation and coordination with the Mainland in emergency response mechanisms will be enhanced to further strengthen the role of CM in major public health incidents.

## **Action 2.3**

### **Strengthening the role of Chinese medicine in primary healthcare**

#### **Enhancing the development of CM primary healthcare services to alleviate long-term healthcare burden**

In 2025, HHB conducted a CM Services Users' Experience Survey (with 3 661 successful public respondents) and collaborated with CMCHK on the Hong Kong CMPs Practice Pattern Survey (with 3 151 successful CMP respondents). The findings indicate that both CM services users and CMPs (i) generally support standardising CM treatment processes for CMPs managing primary healthcare conditions; (ii) widely agreed that CMPs should form service networks with family doctors to provide chronic disease management services; and (iii) are in favour of participating in and providing CM services coordinated by DHCs (Figure 1.5).

Figure 1.5

### Opinions of Chinese medicine service users and Chinese medicine practitioners on the primary healthcare service models



Source: Hong Kong Chinese Medicine Practitioners Practice Pattern Survey (2025), Health Bureau and Chinese Medicine Council of Hong Kong; Chinese Medicine Services Users' Experience Survey (2025), Health Bureau

CMU will work closely with PHCC, Strategic Purchasing Office, HA, NGOs (including operators of CM clinics in the community, CMCTRs and DHCs) and universities to enhance the entire capacity of CM sector in providing outpatient services for conditions where CM demonstrates distinct advantages, such as primary low back pain, primary neck pain, depression and migraine. Registered CMPs will collaborate with interprofessional primary healthcare networks comprising doctors, nurses, physiotherapists, occupational therapists, radiographers, medical laboratory technologists and social welfare professionals to deliver comprehensive primary healthcare services.

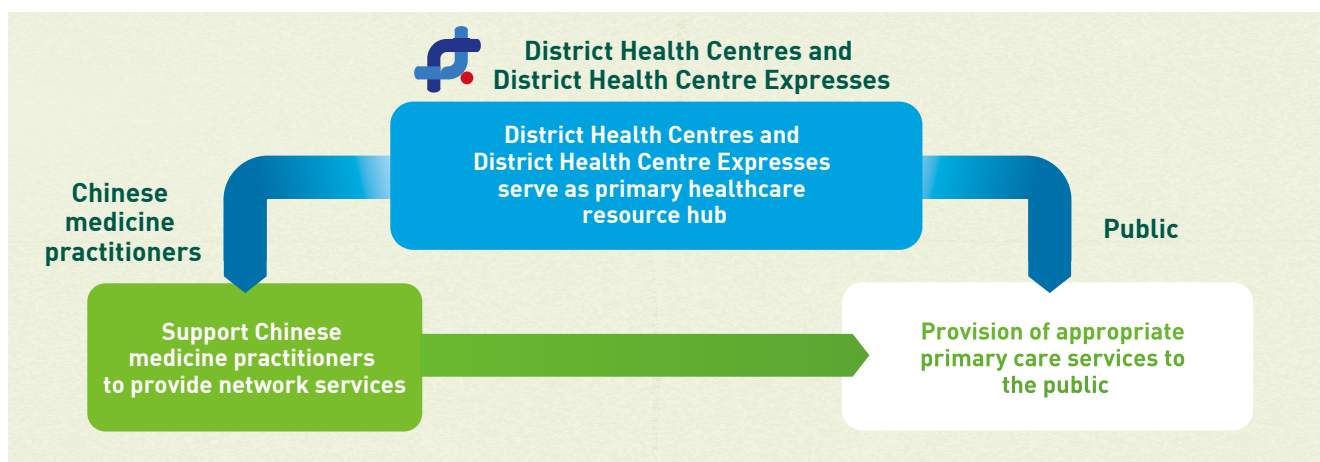
The formulation of the CM primary health service model (Figure 1.6) should build upon the outcomes of the actions mentioned earlier, including formulating a list of conditions where CM demonstrates distinct advantages (see Action 1.1), selecting safe and effective CM diagnosis and treatment plans based on recommendations of CPGs (see Action 1.2), and clearly stating the

interprofessional collaboration arrangements and standardising processes for referral to secondary and tertiary healthcare services through CPs (see Actions 2.1 and 2.2). HHB and HA will conduct regular reviews of the supply and demand for government-subsidised CM outpatient services and accordingly conduct re-provision of selected CMCTRs through space identification, so as to make appropriate adjustments to the service provision capacity and model. CMHHK will strengthen the innovation of primary healthcare service models in the long term, collaborating with CMCTRs and DHCs to support the expansion of CM services in primary healthcare.

CMU and PHCC will study and explore how to leverage the advantages of CM in primary healthcare. Based on patients' needs, existing clinical evidence and potential for reducing long-term healthcare burden, pilot programmes for CM management on chronic diseases will be explored.

Figure 1.6

## The role of District Health Centres and District Health Centre Expresses in the future Chinese medicine primary health service model



### Inclusion of CMPs in the Primary Care Register (the Register) (currently known as the Primary Care Directory) to facilitate public access to appropriate CM services

Currently, most CMPs provide outpatient services in primary healthcare, the CM service models formulated through the above actions (including the use of CPGs and CPs) need wider promotion and implementation across the CM sector to achieve maximum benefits. The *Primary Healthcare Blueprint* has explicitly recommended strengthening the role of CM and CMPs in primary healthcare services. CMPs participating in government-subsidised primary healthcare programmes (including CMPs joining EHCV Scheme and serving as DHC network service providers) will be required to enrol in Register, with specified enrolment and maintenance of listing requirements.

### Promoting the use of eHealth by CMPs to facilitate interprofessional information exchange and collaboration

The functions of eHealth and eHRs will help strengthening the application of CPGs and CPs in CM primary healthcare services. Building upon the *Primary Healthcare Blueprint* and to further advance the integration of primary healthcare services, enhance service continuity and promote interprofessional collaboration, CMPs listed in the Register will progressively be required to use eHealth.

Through the above goals and actions, Hong Kong will continuously strengthen evidence-based CM services underpinned by traditional CM features and interprofessional collaboration mechanisms. Aligned with corresponding national CM

development policies and directions, the CM service system will be enhanced. The table below outlines the national policies corresponding to each action in this chapter:

Chinese Medicine Services Action Plan Corresponding to National Policies		
Action	Implementation Details	National Policies
<b>Goal 1: Enhancing Clinical Services Excellence</b>		
1.1	Defining the role of Chinese medicine services within the healthcare system	Formulate a list of conditions for which CM demonstrates distinct advantages and develop corresponding CM service programmes at primary, secondary and tertiary healthcare
		<i>The 14th Five-Year Plan</i> : Formulate and promote diagnosis and treatment plans for conditions where CM demonstrates distinct advantages <i>Implementation Plan for the Major Project of Revitalization and Development of Traditional Chinese Medicine</i> : Establish national specialties where CM demonstrates distinct advantages, enhance and improve CM diagnosis and treatment plans
1.2	Improving the quality and clinical effectiveness of Chinese medicine services	Formulate CPGs with distinctive CM features and facilitate the formulation of CPGs for herb-drug interaction
1.3	Upgrading Chinese medicine services through technological empowerment	Utilise technology to conduct big data research and analyse CM and WM eHRs data
		<i>Several Opinions on Promoting the Development of Digital Traditional Chinese Medicine</i> : Promote the integration of multidimensional data in CM; construct monitoring and evaluation systems for CM services and CMs quality; facilitate data sharing in related fields to support evidence-based CM decision-making
<b>Goal 2: Establishing an Interprofessional Service System</b>		
2.1	Deepening interprofessional collaboration mechanisms for Chinese medicine services	Develop CPs of conditions for which CM and ICWM demonstrate distinct advantages, implement interprofessional collaboration mechanisms, regularly review and update CPGs and CPs for clinical application
		<i>The 14th Five-Year Plan</i> : Formulate and promote diagnosis and treatment plans and CPs for conditions where CM demonstrates distinct advantages; promote collaboration of CM and WM in tackling key problems; incorporate CM into multidisciplinary diagnosis and treatment systems
2.2	Integrating into the healthcare system fully and fostering cross-institutional collaboration	Promote horizontal and vertical integration of CM services among different institutions within the healthcare system
		<i>Implementation Plan for the Major Project of Revitalization and Development of Traditional Chinese Medicine</i> : Establish long-term collaboration mechanisms for CM and WM
		CMHHK collaborates with local, Mainland and international partners to jointly establish a CM service standard setting platform
		<i>The Highlands Construction Plan</i> : Leverage the establishment of the first CM hospital in Hong Kong to promote GBA CM healthcare consortia and hospital clusters; gather internationalised, specialised healthcare resources around the special diseases where CM demonstrates distinct advantages to provide CM services covering Guangdong, Hong Kong and Macao and in life-course framework

## Chinese Medicine Services Action Plan Corresponding to National Policies

Action	Implementation Details	National Policies
<b>Goal 2: Establishing an Interprofessional Service System</b>		
<b>2.2</b> Integrating into the healthcare system fully and fostering cross-institutional collaboration	Expand ICWM services within HA to cover more WM specialised disease areas	<p><i>The 14th Five-Year Plan:</i> Formulate and promote diagnosis and treatment plans and CPs for conditions where CM demonstrates distinct advantages; promote collaboration of CM and WM in tackling key problems; incorporate CM into multidisciplinary diagnosis and treatment systems</p> <p><i>Implementation Plan for the Major Project of Revitalization and Development of Traditional Chinese Medicine:</i> Establish long-term collaboration mechanisms for CM and WM</p>
	Formulate CPGs and CPs of CM for public health emergency preparedness	<i>The 14th Five-Year Plan:</i> Enhance the capacity of CM to participate in emerging infectious disease prevention and public health emergency response
<b>2.3</b> Strengthening the role of Chinese medicine in primary healthcare	Formulate CM service model and strengthen its development in primary healthcare	<i>The 14th Five-Year Plan:</i> Strengthen CM service networks in primary healthcare; innovate CM service models
	Regularly review the supply and demand for government-subsidised CM outpatient services through re-provisioning some CMCTRs and make appropriate adjustment to the service provision	
	Request CMPs participating in government-subsidised primary healthcare programmes (including CMPs joining EHCV Scheme and serving as DHCs network service providers, etc.) to enrol in the Register	<i>The 14th Five-Year Plan:</i> Enhance information technology capability and level of CM in primary healthcare
Promote the use of eHealth by CMPs to facilitate interprofessional information exchange and collaboration		



## Expected Policy Outcomes

HHB will continue to work closely with various healthcare service related departments and stakeholders to enhance the CM service system. By 2030, it is expected that a certain number of conditions where CM demonstrates distinct advantages will be listed, CPGs with distinctive CM features, CPs for conditions where CM and ICWM demonstrate distinct advantages, and preparatory plans for the role of CM in pandemics and other public health emergencies will be formulated. A relatively mature framework

for interprofessional and cross-institutional collaboration models will be established, and a CM primary healthcare service model will be initially formulated and piloted. By 2035, a mature CM primary healthcare service model is expected to be established. Also, the healthcare system will fully leverage the advantages of CM in secondary and tertiary healthcare to help alleviate long-term healthcare burden. Technology will be fully utilised for research on CM and WM eHRs data. Specific actions and implementation details are set out in the table below:

Chinese Medicine Services Action Plan					
Action	Implementation Details	Short Term	Medium Term	Long Term	
<b>Goal 1: Enhancing Clinical Services Excellence</b>					
1.1	Defining the role of Chinese medicine services within the healthcare system	Formulate a list of conditions for which CM demonstrates distinct advantages and develop corresponding CM service programmes at primary, secondary and tertiary healthcare	✓	✓	
1.2	Improving the quality and clinical effectiveness of Chinese medicine services	Formulate CPGs with distinctive CM features and facilitate the formulation of CPGs for herb-drug interaction	✓	✓	✓
1.3	Upgrading Chinese medicine services through technological empowerment	Utilise technology to conduct big data research and analyse CM and WM eHRs data		✓	✓

## Chinese Medicine Services Action Plan

Action	Implementation Details	Short Term	Medium Term	Long Term	
<b>Goal 2: Establishing an Interprofessional Service System</b>					
<b>2.1</b>	Deepening interprofessional collaboration mechanisms for Chinese medicine services	Develop CPs of conditions for which CM and ICWM demonstrate distinct advantages, implement interprofessional collaboration mechanisms, regularly review and update CPGs and CPs for clinical application	✓	✓	✓
<b>2.2</b>	Integrating into the healthcare system fully and fostering cross-institutional collaboration	Promote horizontal and vertical integration of CM services among different institutions within the healthcare system		✓	✓
		CMHHK collaborates with local, the Mainland and international partners to jointly establish a CM service standard setting platform		✓	✓
		Expand ICWM services within HA to cover more WM specialised disease areas	✓	✓	✓
		Formulate CPGs and CPs of CM for public health emergency preparedness	✓	✓	✓
<b>2.3</b>	Strengthening the role of Chinese medicine in primary healthcare	Formulate CM service model and strengthen its development in primary healthcare	✓	✓	✓
		Regularly review the supply and demand for government-subsidised CM outpatient services through re-provisioning some CMCTRs and make appropriate adjustment to the service provision	✓	✓	✓
		Request CMPs participating in government-subsidised primary healthcare programmes (including CMPs joining EHCV Scheme and serving as DHCs network service providers, etc.) to enrol in the Register	✓	✓	
		Promote the use of eHealth by CMPs to facilitate interprofessional information exchange and collaboration	✓	✓	

# Chinese Medicine Profession

# Chinese Medicine Profession

## Current Status

### 1. CM Regulatory Framework and Talent Cultivation in Hong Kong

#### 1.1 Regulatory framework

Hong Kong has a robust regulatory system for CM. In 1999, the Legislative Council passed the Ordinance and CMCHK was established in the same year. Upholding the principle of professional autonomy, CMCHK implements CM regulatory measures to ensure adequate standards of professional practice and professional conduct in the profession of CMPs and to promote professional education of CMPs. The Ordinance provides a clear definition of CM practice, establishing the legal foundation for Hong Kong's model of pure CM clinical and professional education. According to the Code of Professional Conduct for registered CMPs, CMPs in Hong Kong shall not use other professional treatment methods as regulated by laws concerning those other medical and healthcare professions. Consequently, the practice of CM in Hong Kong differs from that in the Mainland.

Currently, CMCHK comprises 19 members, including a Chairman, 5 CMPs, 5 persons from the trade of CMs, 2 persons from educational or scientific research institutions in Hong Kong, 3 lay persons, 2 public officers and the Director of Health (ex officio member). CMCHK has established a CMPs Board and a Chinese Medicines Board to handle CM and CMs matters respectively. There are seven committees (Registration Committee, Examination

Committee, Disciplinary Committee of CMPs, Committee on Assessment of CM Degree Courses, Ethics Committee, Health Committee and the Health Committee for Listed CMPs) under the CMPs Board to oversee registration and professional conduct of CMPs.

The registration system for CMPs in Hong Kong has been implemented since 2000. Currently, any person wishing to become a registered CMP must pass the Licensing Examination. Over the past five years, an average of about 290 persons passed the Licensing Examination annually to become registered CMPs. The limited registration regime provides an alternative pathway for educational or scientific research institutions to engage CM experts to perform clinical teaching or research in Hong Kong. As of November 2025, there were a total of 10 842 CMPs in Hong Kong, comprising 8 797 registered CMPs, 27 CMPs with limited registration and 2 018 listed CMPs. The training backgrounds of Hong Kong's CMPs are diverse. Currently, registered CMPs must fulfil continuing education requirements upon renewal of their practising certificates to ensure their professional knowledge keeps pace with the times (see Section 1.2.3 of this chapter).

#### 1.2 Talent cultivation

Talent is a key factor in professional development. Following the establishment of the Hong Kong Special Administrative Region, the Government has adopted a multi-pronged approach to create a suitable learning and research environment at different stages of CM talent growth, nurturing a new generation of CM professionals.

### 1.2.1 Pre-registration training

Since 1998, HKBU, CUHK and HKU have successively launched full-time undergraduate CM programmes funded by UGC (see Table 2.1). There are a total of 85 funded places annually in the 2025-28 triennium. In addition, the CMPs Board of CMCHK recognises 63 undergraduate CM programmes offered by Mainland CM institutions. Graduates of these recognised programmes are eligible to take the Licensing Examination.

### 1.2.2 Post-registration training

Post-registration CM training refers to voluntary clinical training provided in the early stage of practice to strengthen the independent practice capabilities of CMPs. CMCTRs have been providing voluntary post-registration training for CMPs. In 2020, a new training programme for registered CMPs was launched to enhance clinical practice capabilities in the early stage of CM practice, laying an important foundation for the development of post-registration CM training.

HA also provides CM Scholarship Programme, enabling CMPs from CMCTRs to receive clinical training in the Mainland. Furthermore, to expedite the cultivation of personnel with capabilities for ICWM inpatient services, HA has collaborated in recent years with Tier III Class A CM hospitals in GBA to launch the GBA CM Visiting Scholars Programme, inviting senior Mainland CM experts to Hong Kong and providing clinical guidance to the local CMPs. HA also implements the CM Enhanced In-patient Training Programme with GBA, arranging for local CMPs to receive inpatient clinical training within the clinical teams of Mainland CM hospitals through short-term practice attachments.

CMHHK serves as a base for CM clinical teaching and training, providing comprehensive support for the high quality development of CM education and training in Hong Kong.

**Table 2.1 : List of recognised local programmes for the Licensing Examination**

University	Programme duration (Mode of study and funding)	Programme title
HKU	6 years (Full-time funded programme*)	Bachelor of CM (Full-time)
CUHK	6 years (Full-time funded programme*)	Bachelor of CM
	4 years (Full-time self-financed programme)	Master of CM (Full-time)
HKBU	6 years (Full-time funded programme*)	Bachelor of CM and Bachelor of Science (Hons) in Biomedical Science

\* UGC-funded programmes

### 1.2.3 CME

The CMPs Board of CMCHK formally implemented the mechanism of CME for registered CMPs in 2005, making CM the first healthcare profession in Hong Kong to have mandatory continuing education requirements linked to licence renewal. Registered CMPs must fulfil CME requirements to renew their practising certificates. As of 2025, there are 27 recognised CME Programme Providers offering CME courses and organising various types of CME activities for registered CMPs.

The three Schools of CM in Hong Kong have successively launched postgraduate programmes since 2003. Some CMPs also choose to pursue postgraduate programmes offered by Mainland institutions. These programmes primarily adopt a taught-study model, covering various professional aspects of CM.

Furthermore, to align with the long-term development of CM in Hong Kong and the need for cultivating high level talent, the HHB and the NATCM have jointly organised the Hong Kong CM Talent Training Programme since 2023, providing advanced clinical skills and professional knowledge training to cultivate and reserve high level CM talent for Hong Kong.

## 2. Policy Directions for CM Professional Development and Talent Cultivation in the Chinese Mainland

The country attaches great importance to the inheritance, innovation and development of CM. The guiding principles of the *14th Five-Year Plan* are “placing equal emphasis on Chinese and Western medicine, guard the wisdom, forge the future”, calling for vigorous development of CM education and building up a CM talent pool.

The country’s Ministry of Education, National Health Commission and NATCM jointly issued the *Opinions on Strengthening Medical-Education Collaboration and Implementing Education and Training Plan for Excellent Doctor 2.0* in 2018 to take forward the competency-based educational reforms.

*The 14th Five-Year Plan for the Development of Traditional Chinese Medicine Talents* emphasises the importance of building up a CM talent pool that meets the needs of CM inheritance, innovation and development, adhering to the laws of CM development and talent growth. It also seeks to develop talent classification and evaluation standards aligning with the characteristics of the CM industry in terms of innovative value, competence and contribution.

Currently, the Mainland primarily adopts a “5+3” medical talent nurturing system with Chinese characteristics, and promotes the establishment of a talent nurturing system that organically integrates institutional, postgraduate and continuing education with the adoption of apprenticeship throughout the process.

The country has taken forward building up a top CM talent pool to nurture leading and young key talents for CM by implementing talent nurturing programmes, such as the Qi Huang Scholars and Qi Huang Young Scholars. With the support of the country, Hong Kong CMPs are given the opportunity to participate in the selection process of these high level talent nurturing programmes. As of 2025, a total of 5 Hong Kong CMPs have been selected to participate in the Qi Huang Scholars and Qi Huang Young Scholars nurturing programmes, driving the professional development of CM in Hong Kong.

The national CM education experience and research outcomes provide a strong foundation for CM development in Hong Kong, supporting the city’s high quality CM professional development and talent cultivation.

### 3. CM Professional Development and Talent Cultivation in Hong Kong: Strengths, Opportunities and Challenges

Hong Kong possesses a pure CM system and a high standard modern medical system. Its local tertiary education institutions enjoy a prestigious reputation, and it has robust teaching and assessment mechanisms as well as an internationalised environment and perspective, providing a sound foundation for CM education in

Hong Kong. However, as medical development continues to accelerate, professional training needs to be continuously improved to keep pace with current developments. The commencement of CMHKK and the rich CM teaching resources from the country present significant opportunities for CM professional development in Hong Kong. Hong Kong needs to leverage these effectively to address multifaceted challenges. An analysis of the current status of CM professional development and talent cultivation in Hong Kong is detailed in Table 2.2.

**Table 2.2 : Analysis of the current status of CM professional development and talent cultivation in Hong Kong**

#### Strengths

Hong Kong has both a pure CM system and a mature modern medicine, allied health and scientific research foundation, providing a platform for the further development of the CM profession and training.

The three Schools of CM in Hong Kong are established within comprehensive universities, providing an environment for interprofessional interaction and exchange.

CM education adopts bilingual (Chinese and English) teaching. The institutions have an internationalised environment, cultivating talents with cross-cultural communication skills.

The existing mechanisms in tertiary institutions and continuing education organisations are robust, enabling the establishment of a more comprehensive teaching and assessment system in the future.

#### Opportunities

CMHKK provides an inpatient CM environment and opportunities for internship and advanced training in interprofessional collaboration, serving as a local clinical training base.

CMCTRs and service points of ICWM services at the public hospitals provide training bases for CM talent cultivation.

Mainland's strong support for Hong Kong's CM development has consistently provided abundant CM training support and resources.

Hong Kong is well-positioned to establish a more comprehensive CM training standard accreditation system for overseas reference.

## Challenges

Patient demands and expectations for CM services continue to increase, requiring CMPs to continuously enhance their professional competence.

CM education and professional training need to be continuously reviewed and optimised in a comprehensive manner with reference to the latest achievements in the Mainland and international medical education, in response to patient needs and new demands for CM development. Core competence and a competence assessment system need to be established for CMPs.

Hong Kong needs to establish an inpatient CM environment to serve as a clinical internship base for undergraduate students and a base for postgraduate advanced training.

Technology is advancing rapidly. Hong Kong's CMPs need to leverage technology to promote CM professional and training development.

With the expectation of expanding medical functions, Hong Kong's CMPs urgently need continuous expansion of more targeted high level training.

Hong Kong needs to strengthen the cultivation of talents who possess both CM theoretical knowledge and clinical capabilities, and can collaborate with doctors and other healthcare professionals, in line with future service development.

CM professional development encompasses multiple domains, including the formulation and accreditation of professional competence standards, training and evaluation standards, enhancement of professional regulation, and the overall advancement of CM. It also requires close coordination with high quality CM professional education. In response to the analysis in Table 2.2, the CM professional development and talent cultivation in Hong Kong will **draw on the achievements of the Mainland's CM education development, adhere to the laws of talent growth**

**in CM, and empower the CM sector to deepen the construction of a CM education and professional development system in Hong Kong covering from admission to retirement. This will continuously enhance the professional competence and standard of CMPs to meet patient and societal healthcare needs, drive the ongoing advancement of CM, and in the long term, propel Hong Kong's CM teaching and assessment systems globally.**

Relevant goals and actions for CM profession are listed below (see Table 2.3):

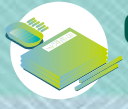
### Table 2.3 : Overview of goals and actions for CM profession

#### Goal 3: Leading Chinese Medicine Professional Development

**Action 3.1** Elevating competence standard of the Chinese medicine profession

**Action 3.2** Building a more comprehensive Chinese medicine talent cultivation system

**Action 3.3** Empowering the sector to continuously advance Chinese medicine professional development



## Goal 3: Leading Chinese Medicine Professional Development

### Action 3.1

#### Elevating competence standard of the Chinese medicine profession

#### Implementing competence-based CM education

The international medical education community is currently promoting a shift from traditional educational models to a competence-based approach, focusing on cultivating clinical competence to ensure that healthcare professionals upon completion of training possess and demonstrate the professional competence expected by society, thereby providing safe and high quality healthcare services. Formulating core competence standards is a crucial foundation for competence-based education.

Healthcare professions in Hong Kong such as doctors, dentists and nurses have established their respective core competence standards and frameworks based on professional needs, serving as reference standards for professional training. Since 2018, the Mainland has promoted medical education reform oriented towards competency-based medical education, producing numerous research outcomes over the years, including standards for undergraduate medical education, and evaluation and assessment methods for CM talent. CMCHK, in collaboration with the CM sector, will leverage on Mainland's achievements to formulate the core competence standard for CMPs of Hong Kong. This will serve as the benchmark for teaching, assessment and accreditation across all stages of CM training, addressing the needs of CM talent cultivation in Hong Kong.

#### Optimising Hong Kong's undergraduate CM curriculum

To effectively implement and execute the competence-based medical education approach, it is common internationally to utilise various educational practice tools, enabling trainees to achieve learning outcomes stage by stage in a planned and supervised educational environment, and using systematic teaching tools for assessment to enhance the learning performance of healthcare trainees. The Mainland educational experience also indicated that using competence-based assessment tools in CM curricula significantly enhances learning effectiveness.

Hong Kong can refer to Mainland and international experiences and adapt relevant achievements according to local context to promote competence-based CM education. Based on the core competence standard for CMPs, Hong Kong can optimise the undergraduate CM curriculum, establishing appropriate teaching and assessment models to ensure CM students effectively acquire corresponding competence stage by stage. This will also provide experience and a foundation for optimising teaching and assessment in other training stages beyond the undergraduate CM curriculum.

Furthermore, the Government will promote resource sharing among the three Schools of CM, establish an objective-oriented collaboration and effectiveness review mechanism to synergise complementary strengths among the Schools.

## Reforming the Licensing Examination

Passing the Licensing Examination is currently the only pathway to become a fully registered CMP in Hong Kong. The assessment comprises a written examination and a clinical examination (conducted in the form of an interview), ensuring that practice of CMPs meets professional standards. In various medical education fields, current trends recommend incorporating practical skill assessments into professional qualification examinations to better evaluate candidates' clinical proficiency.

Currently, the Mainland, Australia, Singapore, etc. have adopted systematic and objective practical examination in their respective CM licensing examinations to evaluate candidates' clinical practice abilities. Hong Kong can draw on such experience. In line with the establishment of the core competence standard for CMPs, the clinical practice assessment component of the Licensing Examination can be enhanced to strengthen the evaluation of clinical practice abilities. In the long term, a comprehensive review can be conducted, and widely recognised assessment methods adopted to optimise the Licensing Examination, thereby building and continuously optimising the assessment model for CM talent that meets Hong Kong's needs.

## Strengthening CM professional regulation and establishing an accreditation system

As public expectations for the CM profession continue to rise and the medical functions of CMPs further expand, CMCHK will enhance the professional regulation of CM practice, continuously review and optimise the code of professional conduct and guidelines for CMPs in Hong Kong, and strengthen certification to ensure CMPs keep pace with the times and adhere to professional conduct requirements in

their practice, thereby providing the public with higher quality and safer professional CM services.

A medical education and professional training accreditation system is a standardised quality assurance mechanism aimed at ensuring the quality of medical education, cultivating healthcare professionals who meet societal needs and possess an international perspective, and promoting educational excellence through continuous monitoring. A sound accreditation system not only enhances the quality of medical education, but also boosts public confidence.

To further enhance the quality of CMPs to meet continuously updated regulatory requirements, CMCHK will formulate the core competence standard for CMPs in pre-registration training and continuing education, and explore the development of corresponding training course frameworks, competence assessment standard and accreditation requirement to ensure the quality and effectiveness of professional training. It will also establish a quotable qualifications list accreditation system, allowing CMPs to publicly display their accredited qualifications upon completion of specified courses, facilitating public access and verification.

### Action 3.2

## Building a more comprehensive Chinese medicine talent cultivation system

### Optimising the CM continuing education mechanism

Healthcare professionals must continuously study the latest medical knowledge through lifelong learning to enhance their professional standards in line with evolving healthcare needs. Traditional continuing education primarily focuses on passive learning, with learning outcomes measured

based on the learning hours, which is time-based, making it difficult to comprehensively cover the latest developmental needs of the profession. In response to the establishment of core competence at various stages of CM training, the sector will be encouraged to review the current CME mechanism and gradually progress towards a competence-based CM continuing education mechanism to facilitate continuous enhancement of CMPs' professional competence.

## Enhancing post-registration clinical training

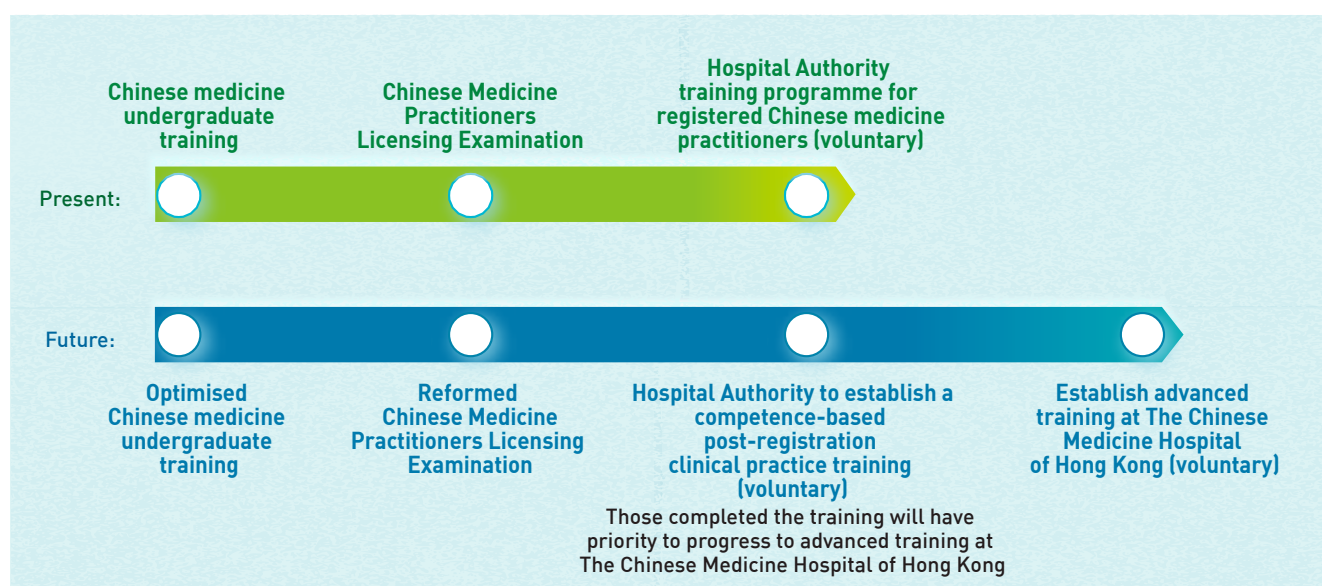
Drawing on the Mainland's achievements in the development of postgraduate CM education, HA will optimise its current training programme for registered CMPs. It will establish a coherent and competence-based post-registration clinical

practice training suited to Hong Kong's healthcare needs to strengthen the clinical practice abilities of CMPs in the early stages of their career, laying a solid foundation for advanced training. The training process will incorporate periodic assessments and feedback, allowing trainees to monitor their individual learning progress, culminating in a summative assessment to evaluate learning outcomes.

CMHHK will, in accordance with the development of its clinical services, further explore the establishment of advanced training in specialised CM services and special disease programmes. CMPs completing the post-registration clinical practice training will be better equipped with relevant clinical capabilities and will have priority to progress to advanced training at CMHHK (see Figure 2.1).

Figure 2.1

### Current situation and prospects of post-registration clinical training for Chinese medicine practitioners



## Exploring long-term development directions for CM specialty

The development of CM specialties is an important issue for professional development. The Government has all along supported the CM sector in discussing and building consensus on issues related to the CM specialty system based on the principle of professional autonomy. With the establishment of protocols for diagnosis and treatment for CM advantageous specialties and special diseases in the Mainland, the rollout of specialised CM services and special disease programmes in CMHHK, and the gradual implementation of the aforementioned goals and actions for CM professional development, the Government will establish a dedicated working group under the Advisory Committee on CM Development (Details are mentioned in the Chapter of “Institutional Framework for Implementing the Blueprint Measures”). This will further create a platform for the CM sector to explore feasible directions for issues related to CM specialty development. CMDF will also continue to provide funding for exploration and research projects related to CM specialty development.

## Promoting specific training to equip CMPs for deeper integration into the healthcare system

With the development of medical functions of CMPs and the gradual strengthening of CM services through horizontal and vertical integration at different levels of healthcare (see Action 2.2), CMPs need to master more comprehensive capabilities to further integrate into the healthcare system.

Among these, interprofessional collaboration is a trend in the development of healthcare services in Hong Kong. The Government is committed to promoting exchange and collaboration among different healthcare professions. *The Primary Healthcare Blueprint* proposes promotion of a multi-disciplinary approach in primary healthcare

services, facilitating healthcare professionals to provide comprehensive services to patients under a team approach.

To enhance mutual exchange and collaboration between CMPs and different healthcare professionals, the Government will encourage different institutions through CMDF to develop professional training courses related to medical functions of CMPs, CM primary healthcare (see Action 2.3) and interprofessional collaboration. When formulating training courses related to interprofessional collaboration, for example, courses on CMPs referring patients for diagnostic imaging and laboratory tests, relevant healthcare professional stakeholders such as doctors will be invited to participate. This aims to deepen mutual understanding between the CM profession and other healthcare professionals and strengthen capabilities for interprofessional collaboration.

Concurrently, the country’s *Opinions on Promoting the Inheritance, Innovation and Development of Traditional Chinese Medicine* explicitly encourages doctors to learn CM. The 14th Five-Year Plan also pointed out the need to improve and implement the system for doctors to learn CM. To promote communication and cooperation between CMPs and doctors in Hong Kong, the Government will continuously encourage through CMDF the establishment and enhancement of existing CM training courses for other healthcare professionals, supporting doctors, nurses and allied health professionals in deepening their understanding of CM. This will further promote two-way exchange between different healthcare professionals and CMPs, enhancing the efficiency of Chinese-Western medicine interprofessional collaborative services.

Furthermore, with the continued development of HA’s ICWM services and the commencement of services at CMHHK, the details and developmental needs for collaboration between nurses, allied health professionals and the Chinese-Western medical team will become clearer. The Government will support ongoing dialogue

between the CM sector and relevant healthcare professions regarding professional collaboration and development directions. This includes actively studying the collaborative roles of various healthcare professionals within the healthcare team, and exploring the formulation of medical function and core competence frameworks for implementing interprofessional services, etc. to align with Hong Kong's healthcare service needs.

### **Cultivating top-tier talents to lead the sector forward**

In the face of various new developments in CM services, CMPs will address more complex disease conditions in clinical work and assume more critical roles in CM education, academic advancement, service development, clinical research, and promoting CM globally. To this end, Hong Kong will actively establish a systematic and internationally aligned high-end talent cultivation mechanism. Through targeted research funding, cross-institutional training programmes, and mentorship systems, the focus will be on cultivating CM Clinician-Scientists, CM Clinician-Educators, and talents under the Advanced Clinical Mentorship Programme in CM, aiming to develop international leaders with profound understanding of CM principles, exceptional clinical ability, and interprofessional capabilities.

Regarding the cultivation of CM Clinician-Scientists, the exploration of establishing dedicated research funds to support promising CMPs in conducting evidence-based clinical research projects will be considered. The funding mechanism will cover seed funding, thematic project collaboration funding, and international cooperation resources, supporting frontier research in clinical epidemiology, randomised clinical trials, healthcare service management, and artificial intelligence and big data analysis. It will also encourage the publication of high level international papers, promoting deep integration of research and clinical practice.

For CM Clinician-Educators, the exploration of establishing an education development fund and teaching award schemes will be considered. These would fund CMPs with both CM theoretical knowledge and clinical capabilities to pursue further studies at renowned medical education institutions in the Mainland and overseas, systematically learning methods in curriculum design, simulation teaching, educational leadership, and educational evidence-based research. Upon completion, they would be required to engage in optimising clinical teaching, establishing clinical examination and assessment systems, developing interprofessional education modules at local universities and CMHHK, and participate in the formulation of international CM education standards, comprehensively enhancing the quality and recognition of CM education.

The Advanced Clinical Mentorship Programme in CM is an in-depth training system combining the master-apprentice mentorship tradition with modern evidence-based medicine. The programme selects renowned CMPs with extensive clinical experience and academic influence as mentors, pairing them with promising young CMPs for mentorship learning, cultivating them into top-tier clinical talents with a profound understanding of CM principles, capable of effectively applying and interpreting CM classics, and possessing high level syndrome differentiation and treatment capabilities. During the programme, special allowances and clinical study resources will be provided. Trainees are required to systematically organise, analyse and inherit their mentor's CM scholarship, theories and experience, and transform these using modern clinical research methods into clinical treatment protocols that can be disseminated. The programme incorporates a rigorous phased assessment mechanism, including clinical competence assessment, summary of medical theory and case studies, inheritance report, and innovative application outcomes, thereby achieving systematic inheritance and academic enhancement of CM scholarship and clinical experience.

These high-end talent cultivation mechanisms not only emphasise the integration of theory and practice but also focus on cross-disciplinary collaboration and the expansion of international perspectives. This will cultivate CM leaders with global competitiveness for Hong Kong, leading the entire sector in achieving leapfrog development across clinical practice, research, education and international cooperation.

### **Converging talent CMPs to drive professional development**

Internationally, to facilitate healthcare professional exchange, clinical teaching, research collaboration, and service development under special circumstances, in addition to full formal registration, other modes of registration exist to accommodate the latest developments in public and industry needs. In view of this, it is recommended to explore the optimisation of the limited registration regime to attract suitable talent CMPs to Hong Kong for supporting service innovation as well as teaching and research work.

#### **Action 3.3**

### **Empowering the sector to continuously advance Chinese medicine professional development**

The Mainland possesses strong CM professional capabilities. Hong Kong will draw on the Mainland's CM professional development resources, experience, and achievements, continuously strengthen talent exchange and cooperation between Hong Kong and the Mainland in CM, foster innovation and transformation in CM professional training and development models, and provide momentum for building a high level CM talent team in Hong Kong.

On the other hand, CMCHK has been continuously implementing various CM regulatory tasks since 1999 to ensure adequate standards of professional practice and professional conduct in the profession of CMPs. To align with the policy direction for CM professional development, the Government will continuously review and strengthen the functions of CMCHK to further enhance the regulation of CM practice and implement the various actions outlined in the Blueprint concerning CM professional development and talent cultivation.

Furthermore, the Government will establish the Advisory Committee on CM Development (Details are mentioned in the Chapter of "Institutional Framework for Implementing the Blueprint Measures") and set up a dedicated working group under it. This will bring together local, Mainland, and overseas experts and scholars for ongoing discussions on CM professional development needs and advancements, such as optimising undergraduate CM curriculum, reforming the Licensing Examination, enhancing post-registration clinical training, optimising CM continuing education mechanism, and exploring long-term development directions for CM specialty. Through funding from CMDF, the sector will be empowered to promote more comprehensive professional development plans for CM, and in the long term, support the sector in exploring the establishment of dedicated bodies to drive CM professionalism towards excellence.

Through the above goals and actions, Hong Kong will continue to lead the high level development in CM profession and talent cultivation systems. It will closely align with the country's corresponding CM development policies and directions,

innovatively transforming national achievements into models suitable for Hong Kong. The table below outlines the national policies corresponding for each action in this chapter:

## Chinese Medicine Profession Action Plan Corresponding to National Policies

Action	Implementation Details	National policies
<b>Goal 3: Leading Chinese Medicine Professional Development</b>		
<b>3.1</b> Elevating competence standard of the Chinese medicine profession	Implement competence-based CM education, formulate the core competence standard for CMPs to serve as the benchmark for teaching, assessment and accreditation	<i>Opinions on Strengthening Medical-Education Collaboration and Implementing Education and Training Plan for Excellent Doctor 2.0:</i> Take forward the teaching reform of competency-based education
	Optimise undergraduate CM curriculum, establish appropriate teaching and assessment models and promote resources sharing among the Schools of CM	<i>The 14th Five-Year Plan:</i> Deepen the reform of traditional CM institutional education; strengthen the building of a talent team with traditional CM distinctive characteristics; establish an evaluation system in line with the characteristics of traditional CM
	Reform the Licensing Examination	<i>The 14th Five-Year Plan for the Development of Traditional Chinese Medicine Talents:</i> Deepen the reform of traditional CM education  <i>Opinions on Strengthening Traditional Chinese Medicine Talent Work in the New Era:</i> Deepen the reform of the traditional CM Physician Qualification Examination, strengthening the assessment of traditional CM thinking and clinical competencies
	Strengthen the regulation of CM practice, continuously review and optimise the code of professional conduct and guidelines for CMPs and establish a quotable qualification list accreditation system	/

## Chinese Medicine Profession Action Plan Corresponding to National Policies

Action	Implementation Details	National policies
<b>Goal 3: Leading Chinese Medicine Professional Development</b>		
<b>3.2</b> Building a more comprehensive Chinese medicine talent cultivation system	Foster the review and optimisation of the CM continuing education mechanism	<p><i>The 14th Five-Year Plan:</i> Improve and implement the system for physician to learn traditional CM</p> <p><i>The 14th Five-Year Plan for the Development of Traditional Chinese Medicine Talents:</i> Build highlands for traditional CM talent development; establish traditional CM clinical teaching bases; improve postgraduate traditional CM education; advance traditional CM continuing education</p>
	Optimise HA's training programme for registered CMPs	
	Establish a post-registration clinical practice training system	
	Explore the establishment of advanced training in specialised CM services and special diseases programmes at CMHHK	
	Explore the long-term development directions for CM specialty	
	Encourage different institutions to develop professional training courses related to medical functions of CMPs, CM primary healthcare and interprofessional collaboration	
	Roll out top-tier CM talents cultivation programmes	
Explore the optimisation of the limited registration regime for CMPs	<p><i>The 14th Five-Year Plan for the Development of Traditional Chinese Medicine Talents:</i> Expand the pool of leading talents in traditional CM; build highlands for traditional CM talent development</p>	
<b>3.3</b> Empowering the sector to continuously advance Chinese medicine professional development	Establish a dedicated working group to hold ongoing discussions on topics related to CM professional development, such as optimising undergraduate CM curriculum, reforming the Licensing Examination, enhancing post-registration clinical training, optimising CM continuing education mechanism and exploring the long-term development directions for CM specialty	/
	Strengthen talent exchange and training between Hong Kong and the Mainland	<p><i>The 14th Five-Year Plan for the Development of Traditional Chinese Medicine Talents:</i> Build highlands for traditional CM talent development</p>
	Facilitate CM sector to establish a more comprehensive CM professional development plan with CMDF funding	/
	Continuously review and strengthen the functions of CMCHK	/

## Expected Policy Outcomes

The aforementioned series of actions aim to empower the sector to establish a CM education model in Hong Kong that adheres to the nature of talent growth in CM. By 2030, it is expected that the core competence standard for CMPs in Hong Kong will be formulated and applied to optimise the undergraduate CM curriculum and the continuing education mechanism, and interprofessional training will be launched. Concurrently, the regulatory functions of CMCHK

will be strengthened to continuously enhance the professional competence and standard of CMPs. Further, by 2035, a comprehensive reform of the Licensing Examination will be achieved, new post-registration clinical practice training and advanced training for CMPs will be launched, and the sector will have constructed more comprehensive CM professional development plans, promoting the continuous advancement of CM professional development. Specific actions and implementation details are set out in the table below:

Chinese Medicine Profession Action Plan					
Action	Implementation Details	Short Term	Medium Term	Long Term	
<b>Goal 3: Leading Chinese Medicine Professional Development</b>					
3.1	Elevating competence standard of the Chinese medicine profession	Implement competence-based CM education, formulate the core competence standard for CMPs to serve as the benchmark for teaching, assessment and accreditation	✓	✓	✓
		Optimise undergraduate CM curriculum, establish appropriate teaching and assessment models and promote resources sharing among the Schools of CM	✓	✓	
		Reform the Licensing Examination	✓	✓	
		Strengthen the regulation of CM practice, continuously review and optimise the code of professional conduct and guidelines for CMPs and establish a quotable qualification list accreditation system	✓	✓	✓

## Chinese Medicine Profession Action Plan

Action	Implementation Details	Short Term	Medium Term	Long Term	
<b>Goal 3: Leading Chinese Medicine Professional Development</b>					
<b>3.2</b>	Building a more comprehensive Chinese medicine talent cultivation system	Foster the review and optimisation of the CM continuing education mechanism		✓	✓
		Optimise HA's training programme for registered CMPs	✓	✓	
		Establish a post-registration clinical practice training system		✓	✓
		Explore the establishment of advanced training in specialised CM services and special diseases programmes at CMHHK		✓	✓
		Explore the long-term development directions for CM specialty		✓	✓
		Encourage different institutions to develop professional training courses related to medical functions of CMPs, CM primary healthcare and interprofessional collaboration	✓		
		Roll out top-tier CM talents cultivation programmes	✓	✓	✓
		Explore the optimisation of the limited registration regime for CMPs	✓	✓	✓
<b>3.3</b>	Empowering the sector to continuously advance Chinese medicine professional development	Establish a dedicated working group to hold ongoing discussions on topics related to CM professional development, such as optimising undergraduate CM curriculum, reforming the Licensing Examination, enhancing post-registration clinical training, optimising CM continuing education mechanism and exploring the long-term development directions for CM specialty	✓	✓	✓
		Strengthen talent exchange and training between Hong Kong and the Mainland	✓	✓	✓
		Facilitate CM sector to establish a more comprehensive CM professional development plan with CMDf funding	✓	✓	✓
		Continuously review and strengthen the functions of CMCHK	✓	✓	✓

# Chinese Medicines Development

# Chinese Medicines Development

## Current Status

### 1. Regulation of CMs<sup>6</sup> in Hong Kong

Hong Kong has a robust regulatory system for CMs. The Ordinance provides a legal framework for the regulation of the use, sale, and manufacture of CMs in Hong Kong.

#### 1.1 Regulatory system for CMs in Hong Kong

##### 1.1.1 Regulation on Chms

Given the wide variety of Chms, the current regulatory mechanism classifies them into different categories according to their toxicity and degree of popularity in Hong Kong. Having regard to meet regulatory needs, 605 types of Chms are respectively listed as 31 types of Schedule 1 and 574 types of Schedule 2 Chms under the Ordinance, clearly stated the origin and species of each Chm. DH has a market surveillance system that samples Chms on the market for testing on a regular basis, in order to ensure the quality and safety of Chms regulated under the Ordinance meet the required standards.

##### 1.1.2 Regulation and definition of pCms

The registration system for pCms regulates the manufacture and sale of pCms to ensure their quality, safety and efficacy, thereby safeguarding consumption by the citizens. In Hong Kong, pCms must be registered with CMCHK before they can be legally imported, sold or possessed.

According to the Ordinance, pCms refer to any proprietary product composed of any Chms or materials of herbal, animal or mineral origin customarily used by the Chinese as active ingredients and formulated in a finished dose form, which is used for the diagnosis, treatment, prevention or alleviation of any disease or symptom of a disease in human beings, or for the regulation of functional states of the human body. Any pCm to be registered in Hong Kong must meet the registration requirements stipulated by CMCHK regarding safety, quality and efficacy. Upon review and compliance, a “Certificate of registration of pCm” (HKC) will be issued. As of November 2025, there are 8 309 pCms products were issued with the HKC in Hong Kong.

##### 1.1.3 GMP for pCms

GMP is a widely adopted and recognised quality control and assurance system for pharmaceutical products by pharmaceutical manufacturers worldwide. GMP ensures continuous production of consistency products which meet safety and quality requirements through establishing standards for hardware and software, including raw materials, premises, equipment, sanitation, personnel training and quality management.

To ensure the quality and safety of pCms, the Government implemented a voluntary GMP regime for local manufacturers in 2003. Licensed pCms manufacturers can apply to CMCHK for a Certificate for Manufacturer (GMP in respect of pCms), certifying that they follow the requirements of good practices in the manufacturing and quality control of pCms. As of November 2025, only 21 out of 265 licensed pCms manufacturers have been issued this certificate, accounting for approximately 8% of all licensed pCms manufacturers.

<sup>6</sup> Including Chinese herbal medicines (Chms) and proprietary Chinese medicines (pCms)

#### 1.1.4 Single CM granules for prescription

At present, the regulation of CM granules for prescription in Hong Kong is divided into two categories. Compound CM granules for prescription which meet the definition of pCms as stated in the Ordinance must be registered with CMCHK before they can be imported, manufactured or sold in Hong Kong, whereas single CM granules for prescription which are used solely by CMPs in prescriptions as substitutes for decoction pieces of general Chms fall into the category of Chms under Schedule 1 or 2 to the Ordinance, and are subject to the regulation of the licensing regime for CMs traders under the Ordinance. They do not require separate registration by CMCHK.

## 2. Setting the HKCMMS

DH launched HKCMMS project in 2002 to expedite modernisation of Hong Kong's CMs industry and facilitate global trade of CMs. Currently, 11 volumes of HKCMMS covering standards for a total of 344 Chms have been published, providing referencing standards for the CM industry. These standards have gained substantial recognition globally, for instance about 157 of the 344 monographs published through HKCMMS were cited as references in over 390 articles of international journals, while 24 International Organization for Standardization (ISO) documents related to CM have cited HKCMMS as references.

## 3. Innovative development and clinical research on CMs in Hong Kong

In recent years, Chinese Mainland has emerged as a core hub for global clinical trials, with the highest number of clinical trials (reaching 78 000) registered annually in the world between 2020 and 2024 according to the data from WHO [3].

Under the booming development of clinical research, statistics from the *Drug Evaluation Reports* issued by NMPA from 2019 to 2024 [4] indicate that the number of applications for registering CMs scored the highest relative growth among all drug categories requiring technical evaluation, increasing by 837% from 257 to 2 407 applications. Among the approved application categories for CMs registration, the number of applications for Investigational New Drug (IND) increased from 17 to 100, whereas the number of New Drug Applications (NDA) increased from 3 to 40, both showcasing significant growth and indicating a clear upward trend in the number of clinical research for new CMs. In addition, from 2020 to 2024, a total of 31 applications for innovative CMs were recommended approval, indicating that the innovative and modernised development of CMs has entered a new stage.

Furthermore, the traditional CM Science and Technology Industrial Park of Co-operation between Guangdong and Macao established in the Guangdong-Macao In-Depth Cooperation Zone in Hengqin under the *Framework Agreement on Cooperation Between Guangdong and Macao* provides services such as scientific research, testing, production and industrial incubation. This serves to promote the research and development (R&D) of CM and the transformation of its outcomes in GBA.

## 4. Cultivation of CMs professionals

Ever since the first UGC-funded undergraduate programme of Pharmacy in CM was launched by HKBU in 2001, institutions such as CUHK, HKU, the Technological and Higher Education Institute of Hong Kong (THEi) and the Hong

Kong Metropolitan University (HKMU) provide professional training courses on CMs of varying levels to assist the industry in cultivating talents (see Table 3.1). In addition, other course providers are actively organising various short-term CMs courses with diverse and flexible content to satisfy the needs of different learners.

**Table 3.1 : Overview of CMs-related programmes of undergraduate level or above provided by local universities and other tertiary education institutions**

University/Tertiary education institution	Programme level (Mode of Study)	Programme title
School of CM, HKBU	Undergraduate (Full-time)	Bachelor of Pharmacy (Hons) in CM
	Postgraduate (Full-time)	Master of Philosophy (MPhil) / Doctor of Philosophy (PhD) Programmes
	Postgraduate (Full-time / Part-time)	Master of Pharmaceutical Sciences in CM
	Postgraduate (Full-time / Part-time)	Master of Science in Drug Discovery (Modernization of CM)
School of CM, HKU	Postgraduate (Full-time)	MPhil / PhD Programmes
	Postgraduate (Part-time)	Master of CM (Stream: Clinical Pharmacy)
School of CM, CUHK	Postgraduate (Full-time)	MPhil / PhD Programmes
	Postgraduate (Full-time / Part-time)	Master of Science in CM Pharmacology and Drug Development
School of Nursing and Health Sciences, HKMU	Postgraduate (Full-time / Part-time)	Master of Chinese Medicinal Pharmacy
THEi	Undergraduate (Full-time)	Bachelor of Science (Honours) in Chinese Medicinal Pharmacy

## 5. Development of CMs Industry in Hong Kong: Advantages, Opportunities and Challenges

Although Hong Kong's CMs industry has a good foundation, there is still room for improvement in areas such as CMs quality control, standard, testing and R&D capabilities, innovative development and clinical trials, as well as the

cultivation of CMs professionals. Through the two flagship institutions, namely CMHHK and the permanent premises of GCMTI which have commenced services, Hong Kong's CMs industry can seize the opportunities from the Mainland and leverage its advantages to actively grasp the occasions for international development. An analysis of the current status of CMs development in Hong Kong is detailed in Table 3.2.

**Table 3.2 : Analysis of the current status of CMs industry in Hong Kong**

### Advantages

Excellent professional institutions: the Hong Kong Centre for Medical Products Regulation (CMPR), GCMTI, CMHHK and the Greater Bay Area International Clinical Trial Institute (GBAICTI) to support the CMs industry

Robust CMs regulation and pCms registration systems are in place to ensure safe use of CMs by the public

Internationally recognised R&D capabilities in Chm standard setting and testing, as well as experience and capabilities in conducting clinical trials

pCms registered in Hong Kong enjoy good reputation and are recognised as a hallmark of confidence both in the Mainland and worldwide

Various government funds are available to support the industry's development

### Opportunities

Public demand for the quality of CMs products is gradually increasing

Rising demand for the development of new CMs both in the Mainland and worldwide

### Challenges

Low prevalence of GMP standard compliance for pCms within the industry

Laws, regulations and guidelines for CMs have to keep pace with the times

Core competencies for CMs professionals are not defined, while systematic training required for future advancement is lacking

International competition for discourse power in traditional medicine is intensifying

Registration standard for traditional medicine products including CMs both in the Mainland and international regulatory agencies are becoming more stringent

In response to the analysis in Table 3.2, the development of CMs sector in Hong Kong will adopt an **international perspective, integrating traditional advantages with modern technology. It aims to enhance research and clinical trial capabilities for CMs, strengthen quality management, improve the talent cultivation**

**mechanism, promote innovative development and advance the standardisation and modernisation of CMs.**

Related goals and actions for CMs development are listed below (see Table 3.3):

**Table 3.3 : Overview of goals and actions for CMs development**

#### **Goal 4: Enhancing Chinese Medicines Quality and Standard**

**Action 4.1** Strengthening quality management of Chinese medicines

**Action 4.2** Implementing good manufacturing practice (GMP) for proprietary Chinese medicines fully

#### **Goal 5: Contributing to the Establishment of International Standard for Chinese Medicines**

**Action 5.1** Leveraging the Government Chinese Medicines Testing Institute to establish standard for Chinese medicines

**Action 5.2** Deepening collaboration between the Government Chinese Medicines Testing Institute and institutions in the Mainland and the Greater Bay Area

#### **Goal 6: Driving Chinese Medicine Innovation in Research and Industry**

**Action 6.1** Promoting innovation of Chinese medicines and clinical trials

**Action 6.2** Empowering the industry to cultivate talents in Chinese medicines



## Goal 4: Enhancing Chinese Medicines Quality and Standard

### Action 4.1

#### Strengthening quality management of Chinese medicines

##### Developing a regulatory system with distinctive CM features

The Chief Executive announced in the 2023 Policy Address the establishment of CMPR to enhance the existing evaluation and approval mechanism for drugs with long-term objective of establishing an internationally recognised regulatory authority for drugs and medical devices, thereby accelerating the clinical application of new drugs and medical devices and driving the development of emerging industries related to the R&D as well as testing of new drugs and medical devices.

CMPR, to be established by the end of 2026, will consolidate regulatory functions for CMs, WMs and medical devices under a single entity and offer numerous synergistic effects. The regulatory function of CMPR on CMs will develop a regulatory system with distinctive CM features from the following three aspects, which would further optimise the regulation of CMs:

- (1) On driving regulatory excellence: CMPR will fully support HHB in enacting new legislation and amending existing and relevant legislations governing CMs products, to ensure the regulatory framework keeps pace with the times. In the meantime, CMPR will actively train the internal evaluation teams to enhance their professional technical competence, aiming to align with international standard, thereby enhancing the quality of locally manufactured and registered pCms.
- (2) On promoting medical product innovation: CMPR is committed to enhancing the approval mechanism for pCms in the aspects of approval efficiency and transparency. It will also establish continuing partnerships and communication mechanisms with industry stakeholders. On the basis of ensuring public health, CMPR will continuously review and rationalise regulatory measures to achieve a reasonable balance between effective regulation and the industry's development.
- (3) On deepening national and international collaboration: CMPR will continue to strengthen collaboration and coordination with NMPA and regulatory authorities in GBA to implement various policy measures. It will facilitate the exchange of personnel, data and information on the registration management and technical standard for CMs (including Chms, granules for prescription and pCms). These efforts aim to foster the development of CMs, contribute to the national development of CM, and promote the continuous development of the CM Highlands in GBA. CMPR will also actively engage in the international regulatory arena by participating in national and international conferences and events on regulation to facilitate broader international recognition of the pCms approved by CMPR (Details are mentioned in the Chapter of "Go Global").

## Reviewing and optimising CMs related laws and regulations

### Revise the definition of pCms to eliminate counterfeit products

Currently, counterfeit pCms products and products falsely marketed as non-pCms exploit grey areas in the legislation to circumvent the registration requirement under the Ordinance. While some of these products are sold in the form of health food, their ingredients and efficacy closely resemble those of pCms and some even contain CMs ingredients with potent medicinal properties, posing potential health risks to consumers. In view of this, it is necessary for the Government to revise the current legislative definition of pCms to strengthen the regulation of such products through legislative amendments, thereby preventing unregistered products or those with unverified compositions from entering the market. Such legislative amendments will not only foster a healthy market structure for law-abiding enterprises, but also further enhance public confidence in pCms products, thereby safeguarding public health and market order.

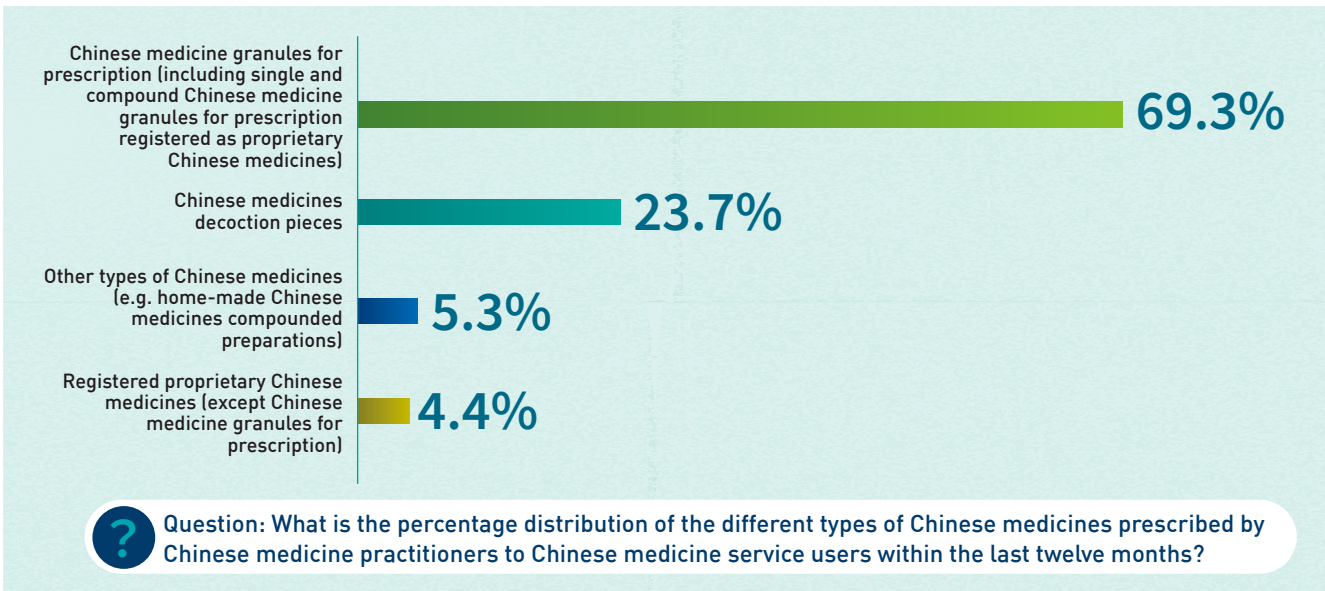
### Establish a regulatory framework for single CM granules for prescription

Based on the results of the *Hong Kong Chinese Medicine Practitioners Practice Pattern Survey* conducted by the HHB and CMCHK (see Figure 3.1), 69.3% of the CM service users seeking treatments from CMPs have been prescribed CM granules for prescription in Hong Kong. Another *Chinese Medicine Service Users' Experience Survey* conducted by the HHB reveals that 71.9% of the CM service users prefer using CM granules for prescription (see Figure 3.2).

Both surveys reflect that CM granules for prescription have become one of the commonly used and widely accepted dosage forms among CMPs and CM service users. However, under the current legislation, single CM granules for prescription are not subject to mandatory registration. Given these products constitute a significant market share and the associated higher risks, adopting preventive measures in an early stage is necessary. Furthermore, differences exist among manufacturers in production processes, variation in quality control may pose potential risks to consumer safety. Therefore, the Government will establish an appropriate regulatory framework and mechanism for single CM granules for prescription to continuously enhance medication safety.

Figure 3.1

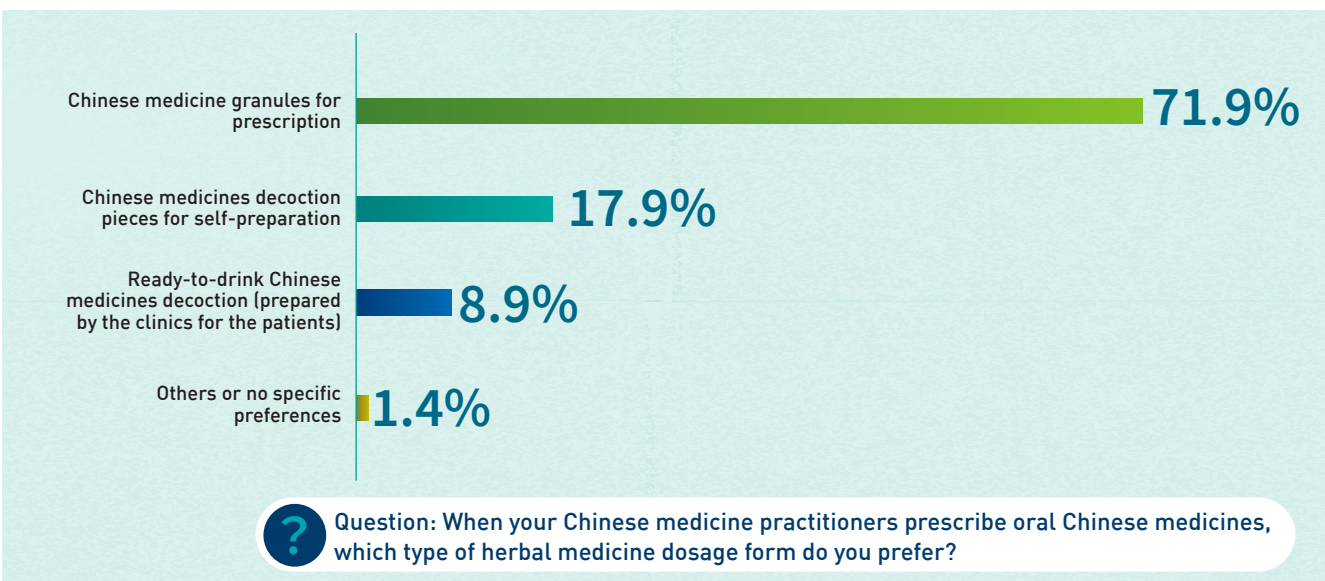
### Types of Chinese medicines prescribed by Chinese medicine practitioners to Chinese medicine service users



Source: Hong Kong Chinese Medicine Practitioners Practice Pattern Survey (2025), Health Bureau and Chinese Medicine Council of Hong Kong

Figure 3.2

### Chinese medicine service users' preferences for different types of oral herbal medicine dosage form



Source: Chinese Medicine Service Users' Experience Survey (2025), Health Bureau

## Comprehensively reviewing pCms registration requirement for international alignment

As international standard for clinical research on traditional medicine products continue to rise, the current clinical research requirements for the registration of new pCms in Hong Kong should also be up-to-date and progressively align with international standard to ensure safety, efficacy and high quality of these products. The Government will conduct a comprehensive review and optimise existing legislation and relevant guidelines concerning pCms registration and clinical research, particularly for innovative CMs. It will establish a registration system aligned with the latest international developments, encourage the Mainland and overseas research institutions and enterprises to invest in innovative R&D. This will further optimise the local ecosystem for CMs innovation and research, facilitate the entry of high quality CMs products into the Hong Kong market to achieve the goal of “good drugs for use in Hong Kong” and promote the CMs products entering the international markets using Hong Kong as a springboard.

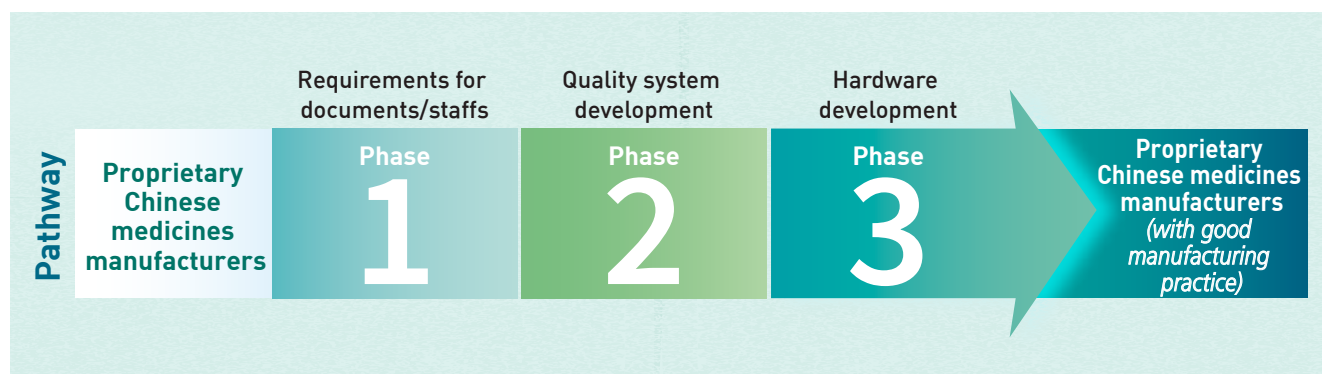
## Action 4.2

### Implementing good manufacturing practice (GMP) for proprietary Chinese medicines fully

To assist the industry in enhancing its competitiveness and entering into international markets, the Government will formulate a timeline for the full implementation of GMP for pCms and proceed with a phased and gradual implementation plan (see Figure 3.3). Through the full implementation of GMP for pCms, the industry can ensure its products meet the quality requirements of the international market, while promoting Hong Kong as an exporter of high quality pCms. Concurrently, the Government will provide various support to the industry through optimising CMDF and other relevant government funding schemes to support the industry in progressively enhancing its manufacturing quality management, ultimately achieving GMP standard for pCms.

Figure 3.3

### Proposed phased implementation of good manufacturing practice for proprietary Chinese medicines





## Goal 5: Contributing to the Establishment of International Standard for Chinese Medicines

### Action 5.1

#### Leveraging the Government Chinese Medicines Testing Institute to establish standard for Chinese medicines

With the commencement of the permanent premises of GCMTI, GCMTI will have enhanced research capabilities. It will actively introduce advanced technologies to enhance the accuracy and efficiency of CMs testing, ensuring its technical capabilities remain at the internationally leading level. Simultaneously, it will explore the feasibility of further developing HKCMMS into an international quality evaluation standard for Chms. This initiative will assure HKCMMS can better accommodate market needs, providing a set of authoritative quality evaluation standard for the retail, wholesale and international trade of Chms. It will strengthen Hong Kong's influence in setting quality standard for Chms, thereby fostering cross-regional and international trade development for Chms and benefitting relevant Chm enterprises and the testing and certification industry.

### Action 5.2

#### Deepening collaboration between the Government Chinese Medicines Testing Institute and institutions in the Mainland and the Greater Bay Area

Since its establishment, GCMTI has signed co-operative agreements with various institutions related to CMs testing in GBA and the Mainland, such as the Institute of Chinese Materia Medica and Experimental Research Center of the China Academy of Chinese Medical Sciences, and the National Institutes for Food and Drug Control, to jointly promote and share resources and technologies relating to CMs testing and specimen preparation. Under these agreements, GCMTI will further deepen cooperation with multiple institutions in the field of CMs quality, conducting a series of research projects related to CMs quality, such as research on CMs quality standard and latest testing technologies and methodologies to ensure the quality of CMs. Furthermore, GCMTI will continuously organise GBA conference on testing of CMs to promote the dissemination and application of the latest CMs testing technologies.



## Goal 6: Driving Chinese Medicine Innovation in Research and Industry

### Action 6.1

#### Promoting innovation of Chinese medicines and clinical trials

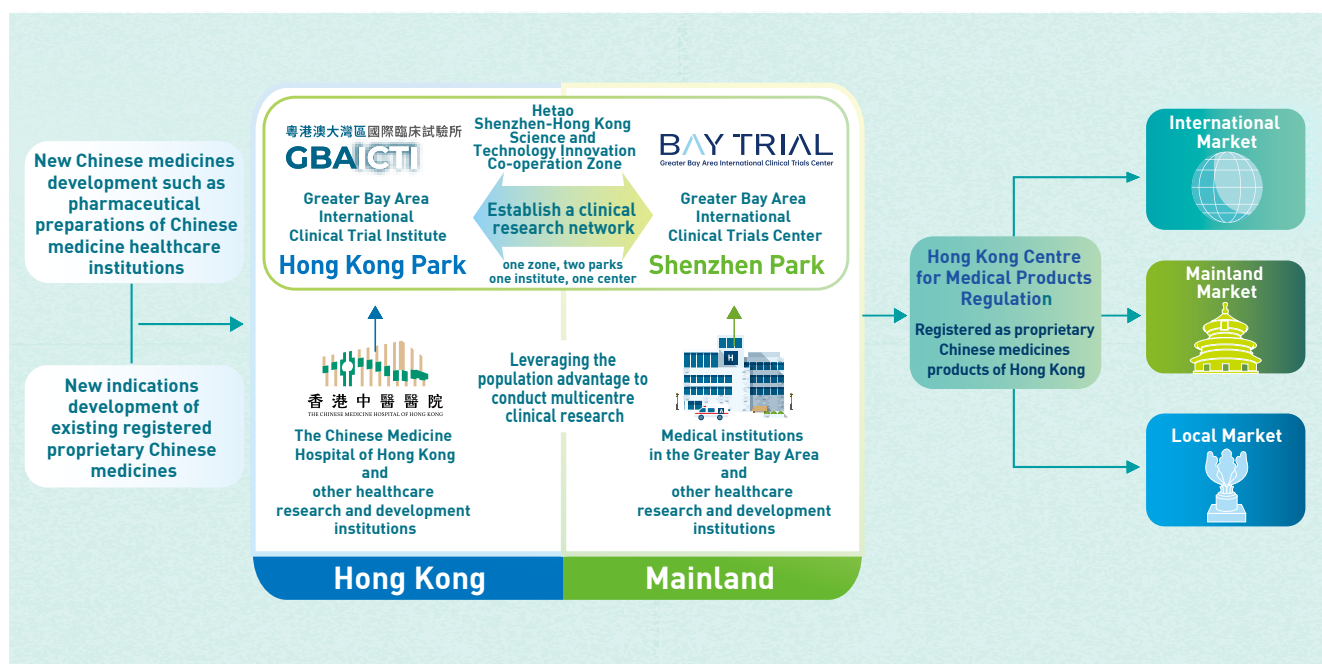
#### Encouraging enterprises to utilise GBAICTI

The Government will actively encourage CM enterprises from both Hong Kong and the Mainland to utilise the platform provided by GBAICTI located in the Hong Kong Park of the Hetao Shenzhen-Hong Kong Science and Technology Innovation Co-operation Zone. This aims to build a clinical research network with the Mainland that complies with both national and international standard, facilitating clinical research on pCms and new pCms development.

This includes encouraging the CM pharmaceutical preparations of medical institutions (Hospital preparations) in the Mainland and new indications development of existing registered pCms etc., utilising the platform for innovative transformation and bringing into full play the key role of GBAICTI as an international clinical research and trial collaboration platform (see Figure 3.4). GBAICTI will develop synergistically with GBA International Clinical Trials Center in the Shenzhen Park, under the “one zone, two parks” and “one institute, one center” model, and leveraging the population base of over 86 million in GBA. It will provide support to CMs enterprises and the Mainland and overseas healthcare R&D institutions, to coordinate and conduct multicentre clinical trials, ensuring these trials meet both national and international standard.

Figure 3.4

#### Leverage the Greater Bay Area International Clinical Trial Institute and its platform to facilitate the development of clinical research on Chinese medicines



## Providing one-stop advisory service to the industry through CMPR

To promote the innovative development and quality enhancement of CMs, the Government will provide one-stop support and consultation services for the enterprises through CMPR to accelerate the pace of innovation in CMs products. CMPR will support the industry by providing guidance on relevant regulatory and technological issues prior to plant construction, pCms registration and clinical trials, and assist enterprise in formulating targeted strategies and proper planning effectively.

In addition, CMPR will coordinate with various local R&D institutions, including GBAICTI, GCMTI, CMHHK and universities to jointly promote the development of new pCms, new indications development of existing registered pCms and enhancement of production qualities etc., providing comprehensive support for the industry, academia and research sectors.

## Action 6.2

### Empowering the industry to cultivate talents in Chinese medicines

#### Establishing core competence requirement for CMs talents and promoting professional training

To facilitate effective alignment between talent cultivation and the industry's needs, the Government will promote collaborative efforts among stakeholders to conduct research on the core competence for talent at different levels within the CMs sector through CMDF. The focus will be on clarifying the alignment between professional competence and industry development needs. The findings can be used in the review of qualification requirements for the responsible persons and their deputies<sup>7</sup> under relevant CMs trader licenses. This will lay the groundwork for future exploration of continuous professional development requirement and mechanism for CMs personnel.

In addition, the Government will set up an Advisory Committee on CM Development (Details are mentioned in the Chapter of "Institutional Framework for Implementing the Blueprint Measures") and establish a dedicated working group on CMs talent cultivation under it. This will provide a platform for relevant stakeholders from the Mainland and local CMs industry to discuss models for the continuing education and development of CMs professionals. CMDF will also empower the industry to implement a systematic professional training framework and mechanism, ensuring the competences of CMs personnel keep pace with industry progress, thereby enhancing the overall competitiveness of the industry and satisfying the industry's demand for appropriate CMs professionals (see Figure 3.5).

<sup>7</sup> According to the Chinese Medicines Regulation [Cap. 549F], responsible persons and their deputies refer to the persons responsible for the supervision of the dispensing or their deputies as nominated in applications for Chm retailer licences; or persons responsible for the supervision of the manufacture or their deputies as nominated in applications for pCms manufacturer licences.

Figure 3.5

### Empowering the industry to cultivate Chinese medicines professionals with support from the Chinese Medicine Development Fund



### Consolidating resources and talent cultivation experiences from Hong Kong and the Mainland to provide diverse CMs professional training

GCMTI will, through exchange and cooperation, participate in joint training projects with local and the Mainland scientific research institutions, in order to assist the local industry in mastering the latest CMs quality control technologies and information. Simultaneously, GCMTI will deepen collaboration with local institutions to jointly conduct high-end research on CMs testing and standard, and provide internship and employment opportunities for undergraduate and postgraduate students, as well as graduates in relevant fields.



Through the above goals and actions, Hong Kong will continue to promote the modernisation of CMs by enhancing CMs quality and standard, contributing to the establishment of international standard for CMs, and driving CM innovation in research and industry. It will closely align with the

Mainland's corresponding policies and directions for CM development to achieve comprehensive advancement of the CM sector. The table below outlines the national policies corresponding to each action in this chapter:

Chinese Medicines Development Action Plan Corresponding to National Policies		
Action	Implementation Details	National Policies
<b>Goal 4: Enhancing Chinese Medicines Quality and Standard</b>		
4.1	Strengthening quality management of Chinese medicines	Develop a regulatory system with distinctive CM features, revise the current legislative definition of pCms, establish an appropriate regulatory framework for single CM granules for prescription, review and optimise the existing legislations and relevant guidelines concerning pCms registration and clinical research
		<p><i>Opinions on Improving the Quality of Traditional Chinese Medicine and Promoting the High-Quality Development of the Traditional Chinese Medicine Sector:</i> Strengthen quality regulation of CMs; improve the CM regulatory system</p> <p><i>The 14th Five-Year Plan:</i> Promote the high quality development of the CMs industry; strengthen safety regulation of CMs</p> <p><i>Technical Requirements for Quality Control and Standard Setting of Concentrated Chinese Medicine Granules</i></p> <p><i>Opinions on Promoting the Inheritance, Innovation and Development of Traditional Chinese Medicine:</i> Vigorously promote the quality improvement and high quality development of the CMs industry; reform and improve the registration management of CMs; strengthen quality and safety regulation of CMs</p>
4.2	Implementing good manufacturing practice (GMP) for proprietary Chinese medicines fully	Formulate a schedule for the phased implementation of GMP for pCms, optimise CMDF to support the industry for GMP upgrades in relation to pCms
		<p><i>Opinions on Improving the Quality of Traditional Chinese Medicine and Promoting the High-Quality Development of the Traditional Chinese Medicine Sector:</i> Accelerate the transformation and upgrading of the CMs industry; improve the manufacturing quality of CMs</p> <p><i>The 14th Five-Year Plan:</i> Promote the high quality development of the CM industry; enhance the development level of the CMs industry</p>

## Chinese Medicines Development Action Plan Corresponding to National Policies

Action	Implementation Details	National Policies
<b>Goal 5: Contributing to the Establishment of International Standard for Chinese Medicines</b>		
<b>5.1</b>	Leveraging the Government Chinese Medicines Testing Institute to establish standard for Chinese medicines	Introduce and conduct research on advanced technologies of CMs testing  <i>Opinions on Improving the Quality of Traditional Chinese Medicine and Promoting the High-Quality Development of the Traditional Chinese Medicine Sector:</i> Promote the open development of CMs; facilitate higher-level opening-up; strengthen the construction of industrial platforms for CMs R&D, testing and trading in GBA, and increase technical support for GCMTI
	Develop HKCMMS into an international quality evaluation standard for Chms	<i>Action Plan for Standardization of Traditional Chinese Medicine (2024–2026):</i> Deepen reform and innovation in traditional CM standardisation; consolidate the foundation for traditional CM standardisation development  <i>The Highlands Construction Plan:</i> Deepen mutually beneficial cooperation to build an industrial highland; fully leverage the advantages of the Testing Centre to establish and promote internationally recognised CMs standards  <i>Opinions on Promoting the Inheritance, Innovation and Development of Traditional Chinese Medicine:</i> Vigorously promote the quality improvement and high quality development of the CMs industry
<b>5.2</b>	Deepening collaboration between the Government Chinese Medicines Testing Institute and institutions in the Mainland and the Greater Bay Area	Sign cooperative agreements with multiple institutions related to CMs testing in the Mainland and GBA  Continuously organise GBA conference on testing technologies of CMs
		<i>The 14th Five-Year Plan:</i> Accelerate the open development of traditional CM; deepen traditional CM exchange and cooperation

## Chinese Medicines Development Action Plan Corresponding to National Policies

Action	Implementation Details	National Policies
<b>Goal 6: Driving Chinese Medicine Innovation in Research and Industry</b>		
6.1 Promoting innovation of Chinese medicines and clinical trials	Build a clinical research network with the Mainland that complies with both national and international standard through GBAICTI	<p><i>Opinions on Improving the Quality of Traditional Chinese Medicine and Promoting the High-Quality Development of the Traditional Chinese Medicine Sector:</i> Advance technological innovation in CMs; enhance technological innovation capabilities; strengthen innovative R&amp;D of CMs</p> <p><i>Implementation Plan for the Major Project of Revitalization and Development of Traditional Chinese Medicine:</i> Construction of traditional CM science and technology innovation platforms</p> <p><i>The 14th Five-Year Plan:</i> Build a high level system for the inheritance, protection, and technological innovation of traditional CM; build high level technology platforms; promote the commercialisation of scientific and technological achievements</p> <p><i>The Highlands Construction Plan:</i> Promote integrated development to build an innovation highland; establish bases for the commercialisation of traditional CM scientific research achievements; build platforms for key technologies, product R&amp;D, commercialization and application of traditional CM</p> <p><i>Opinions on Promoting the Inheritance, Innovation and Development of Traditional Chinese Medicine:</i> Promote the inheritance and open innovation of traditional CM; accelerate traditional CM scientific research and innovation</p>
	Provide one-stop advisory service to the industry through CMPR	<p><i>Opinions on Comprehensively Deepening the Reform of Regulation of Drugs and Medical Devices to Promote the High-quality Development of the Pharmaceutical Industry:</i> Increase support for R&amp;D innovation of drugs and medical devices; improve review and approval mechanisms, fully supporting major innovations</p>

## Chinese Medicines Development Action Plan Corresponding to National Policies

Action	Implementation Details	National Policies
<b>Goal 6: Driving Chinese Medicine Innovation in Research and Industry</b>		
<b>6.2</b> Empowering the industry to cultivate talents in Chinese medicines	Establish core competence requirement for CMs talents	<i>Opinions on Improving the Quality of Traditional Chinese Medicine and Promoting the High-Quality Development of the Traditional Chinese Medicine Sector:</i> Improve comprehensive governance capabilities and support levels; advance talent team building  <i>The 14th Five-Year Plan:</i> Build a high quality traditional CM talent team; strengthen the building of traditional CM characteristic talent teams
	Review the requirement and mechanism of qualification and continuing professional development for the responsible persons and their deputies (i.e. nominated persons and deputies) across relevant CMs traders licenses	
	Support the industry to develop a systematic professional training framework and mechanism, support the professional training for CMs industry through GCMTI	<i>The Highlands Construction Plan:</i> Promote integrated development to build an innovation highland; fully leverage the strengths of Hong Kong and Macao traditional CM professional associations to support traditional CM professional technical exchange and talent cultivation  <i>Opinions on Promoting the Inheritance, Innovation and Development of Traditional Chinese Medicine:</i> Strengthen the building of the traditional CM talent team; optimise talent development pathways

### Expected Policy Outcomes

Through the aforementioned action measures, the Government will continuously ensure the safe use of CMs by the public, enhance the overall image of the CMs sector, actively promote the R&D of pCms products, and foster the long-term development of the CMs sector. By 2030, Hong Kong's CMs regulatory system will be further improved, CMs quality will gradually be enhanced, pCms manufacturers will progressively upgrade according to the GMP timetable, CMs quality standard will be established successively, cooperation with GBA and the Mainland will continue to deepen, increasing capabilities in

standard, testing and research of CMs, and the core competency requirements and continuing professional development models for CMs talents will be finalised. By 2035, pCms manufacturers will fully achieve GMP standard, innovative achievements and standard establishment in CMs will gain international recognition, Hong Kong's competitiveness and influence in CMs research and innovation will continuously increase, GBA clinical research network platform will develop more maturely and the reserve of CMs professionals receiving diversified training will become more ample. Specific actions and implementation details are set out in the table below:

## Chinese Medicines Development Action Plan

Action	Implementation Details	Short Term	Medium Term	Long Term	
<b>Goal 4: Enhancing Chinese Medicines Quality and Standard</b>					
<b>4.1</b>	Strengthening quality management of Chinese medicines	Develop a regulatory system with distinctive CM features, revise the current legislative definition of pCms, establish an appropriate regulatory framework for single CM granules for prescription, review and optimise the existing legislations and relevant guidelines concerning pCms registration and clinical research	✓	✓	
<b>4.2</b>	Implementing good manufacturing practice (GMP) for proprietary Chinese medicines fully	Formulate a schedule for the phased implementation of GMP for pCms, optimise CMDF to support the industry for GMP upgrades in relation to pCms	✓	✓	✓
<b>Goal 5: Contributing to the Establishment of International Standard for Chinese Medicines</b>					
<b>5.1</b>	Leveraging the Government Chinese Medicines Testing Institute to establish standard for Chinese medicines	Introduce and conduct research on advanced technologies of CMs testing		✓	✓
		Develop HKCMMS into an international quality evaluation standard for Chms		✓	✓
<b>5.2</b>	Deepening collaboration between the Government Chinese Medicines Testing Institute and institutions in the Mainland and the Greater Bay Area	Sign cooperative agreements with multiple institutions related to CMs testing in the Mainland and GBA	✓	✓	✓
		Continuously organise GBA conference on testing technologies of CMs	✓	✓	✓

## Chinese Medicines Development Action Plan

Action	Implementation Details	Short Term	Medium Term	Long Term	
<b>Goal 6: Driving Chinese Medicine Innovation in Research and Industry</b>					
6.1	Promoting innovation of Chinese medicines and clinical trials	Build a clinical research network with the Mainland that complies with both national and international standard through GBAICTI	✓	✓	
		Provide one-stop advisory service to the industry through CMPR		✓	✓
6.2	Empowering the industry to cultivate talents in Chinese medicines	Establish core competence requirement for CMs talents	✓		
		Review the requirement and mechanism of qualification and continuing professional development for the responsible persons and their deputies (i.e. nominated persons and deputies) across relevant CMs traders licenses		✓	✓
		Support the industry to develop a systematic professional training framework and mechanism, support the professional training for CMs industry through GCMTI		✓	✓

# Cultural Inheritance

# Cultural Inheritance

## Current Status

### 1. Public Education and Cultural Promotion of CM in Hong Kong

CM is a legacy of Chinese culture, carrying the health wisdom and medical essence of millennia. As a city where Chinese and Western cultures converge, Hong Kong has deeply rooted CM health concepts into the daily life. Deepening the public's understanding and recognition of CM, and integrating CM more profoundly into public life and health, can provide a social foundation for the inheritance and development of CM.

#### 1.1 The Government promotion of accurate CM information to the public

Hong Kong has a robust regulatory framework and mechanisms for CM. CMRO of DH disseminates information on the proper and safe use of CM to the public in various forms. HA also promotes CM knowledge for disease prevention and health preservation to citizens through online platforms. To further strengthen the popularisation of CM culture, the Government established a dedicated funding scheme under CMDF in 2019, encouraging CM sector organisations to hold diversified CM promotion projects. This aims to promote the cultural inheritance of CM and enhance the public's correct understanding and application of CM.

#### 1.2 CM sector and community organisations promote public education and cultural promotion of CM

CM sector associations in Hong Kong have a long-standing history. Over the years, they have actively disseminated CM culture to the public

by organising diverse CM promotion activities. Various NGOs and CM service providers also continuously promote CM knowledge within communities. With the establishment of CMDF, the sector has received targeted resources to support public education on CM, further expanding the coverage and influence of related activities. The outcomes from CMDF supported projects have been uploaded to its online platform for free public access. To enhance effectiveness of CM promotion, in 2024, CMDF initiated a strategic thematic commissioned project: Territory-wide CM Cultural Education, Promotion and Publicity Projects in Schools. Non-profit organisations were invited to compile teaching and learning resource kits, which were then distributed to target group schools to enhance students' understanding of CM and promote the inheritance of CM culture.

### 2. Mainland's Strategies for Promoting CM Culture

*Opinions on Promoting the Inheritance, Innovation and Development of Traditional Chinese Medicine* clearly states the need to promote the excellent traditional culture of China and implement actions to disseminate CM culture, making CM a cultural consciousness for the public in promoting health. The *14th Five-Year Plan Key Projects for the Inheritance and Development of Fine Traditional Chinese Culture* includes the CM culture promotion project. Furthermore, the *Implementation Plan for the Promotion of Traditional Chinese Medicine Culture during the 14th Five-Year Plan Period* and the *Implementation Plan of the Action Plan on the Dissemination of Traditional Chinese Medicine Culture (2021-2025)* propose specific work from multiple perspectives to promote the protection, inheritance, and popularisation of CM culture, provide further guidance for the implementation of cultural dissemination actions.

### 3. Public Education and Cultural Promotion of CM in Hong Kong: Strengths, Opportunities and Challenges

The promotion of CM possesses strengths such as sector support and government resource. However, the dissemination of CM information

does not fully align with public needs and the latest industry developments; resources are relatively scattered; and there is a lack of systematic cross-sector collaboration and full application of social media. An analysis of the current situation of public education and cultural promotion of CM in Hong Kong is detailed in Table 4.1.

**Table 4.1 : Analysis of the current status of public education and cultural promotion of CM in Hong Kong**

#### Strengths

CMDP provides support for the sector to conduct CM publicity, promotion and public education projects.

Various communication channels already have accumulated experience in promoting CM culture and conducting public education through channels such as setting up web pages, distributing pamphlets, and organising touring thematic exhibitions.

#### Opportunities

The flagship CM institutions—CMHHK and the permanent building of GCMTI—will commence phased operation in December 2025, serving as a platform for promoting CM culture and enhancing public awareness to CM.

Social media creates new possibilities for promoting CM, but large-scale applications are currently limited.

#### Challenges

The public can receive CM information from various media, but the information lacks systematic and comprehensive coverage, resulting in insufficient knowledge to correctly choose and use CM.

Promotion resources are relatively scattered, with inadequate target audiences and coverage. Existing promotion and public education activities are conducted by multiple different organisation, necessitating enhanced cooperation and coordination to achieve stronger synergies.

The public does not fully understand that CM is closely related to the health of people across all age groups.

Social information changes rapidly. Existing promotion initiatives fail to adequately and timely respond to the current needs and focal points of the public, weakening the relevance of the promotion.

In response to the analysis in Table 4.1, the public education and cultural promotion of CM in Hong Kong will be based on **cross-institutional and cross-sectoral collaboration, promoting the implementation of more diverse projects to help the public access CM information through various media and channels. These strategies**

**will help the public to gain an in-depth understanding of the strengths of CM services, and widely foster the promotion of CM culture, as well as strengthening cultural confidence.**

Relevant goals and actions for cultural inheritance are listed below (see Table 4.2):

## Table 4.2 : Overview of goals and actions for public education and cultural promotion

### Goal 7: Promoting Culture of Chinese Medicine

**Action 7.1** Disseminating knowledge on the appropriate selection of Chinese medicine for disease prevention and treatment

**Action 7.2** Fostering cross-sectoral collaboration to enhance cultural confidence in Chinese medicine



## Goal 7: Promoting Culture of Chinese Medicine

### Action 7.1

#### Disseminating knowledge on the appropriate selection of Chinese medicine for disease prevention and treatment

#### Promoting the advantages of CM across all levels of healthcare services

As outlined in the Chapter of “CM Services” of this Blueprint, Hong Kong will further strengthen the role of CM services within the healthcare system. To enable CM to serve the public more effectively, we need to convey a more practical information about CM services to the public in a clear and efficient manner. The Government will strengthen the promotion and publicity of CM services. We will foster collaboration between CMTRs, DHCs, NGOs providing CM services, and CMHHK, in the effort of providing the latest information on CM outpatient, day-patient, and inpatient services to the public. We will also encourage the CM sector through CMDF to disseminate accurate knowledge on disease prevention and treatment in CM service areas where it holds distinct advantages, helping the public to make appropriate service choices.

#### Enhancing public understanding of CM regulatory system

Enhancing public awareness of the CM regulatory system is crucial for helping citizens appropriately choose and use CM services and products. With the expansion of CMPs’ medical functions (see Action 3.1) and the continuous improvement of the quality standards of pCms (see Action 4.1), the Government will leverage

different channels and methods to strengthen the dissemination of the latest CM regulatory information to the public, including guiding the public to consult only qualified CMPs, use registered pCms, and purchase Chms from licensed CMs traders.

The Government will encourage various institutions through CMDF to keep abreast of the latest regulations and use diverse methods to promote knowledge about CM regulation to the public. On the other hand, it is necessary to strengthen regulatory literacy for different groups by promoting the development of tailored promotional materials that meet their specific needs, thereby broadening the reach of knowledge on CM regulation.

### Action 7.2

#### Fostering cross-sectoral collaboration to enhance cultural confidence in Chinese medicine

#### Fostering cross-sector institutions collaboration

Hong Kong has established a solid foundation for promoting CM culture. To more effectively integrate resources and further expand the coverage and social impact of projects, the Government will leverage CMDF as a platform to drive cross-sector and cross-institutional synergistic cooperation. This initiative will create synergy across different sectors to develop large-scale CM cultural promotion projects. By expanding the implementation scope and addressing community needs, the overall effectiveness and influence of promotional effort will be enhanced.

Furthermore, CMHHK and the permanent GCMTI building, as flagship institutions, will become important enablers for CM cultural promotion. CMHHK will fulfil its mission of creating health value by disseminating CM health concepts to the public. GCMTI will be open to the public, allowing citizens to experience and understand CM culture and knowledge through activities such as exhibitions and guided tours.

### Encouraging diversified promotional projects implementation to popularise CM culture across all age groups

Broadening the scope of popularising CM culture involves different concepts, knowledge, perspectives, formats, as well as targeting different age groups and demographics. The Government will continue to encourage diversified promotion projects. Tailored to the characteristics of different groups including the elderly, youth and schoolchildren, women, ethnic minorities,

etc., innovative approaches will be used to implement appropriate CM culture promotional projects, thereby enhancing the effectiveness of promotion projects.

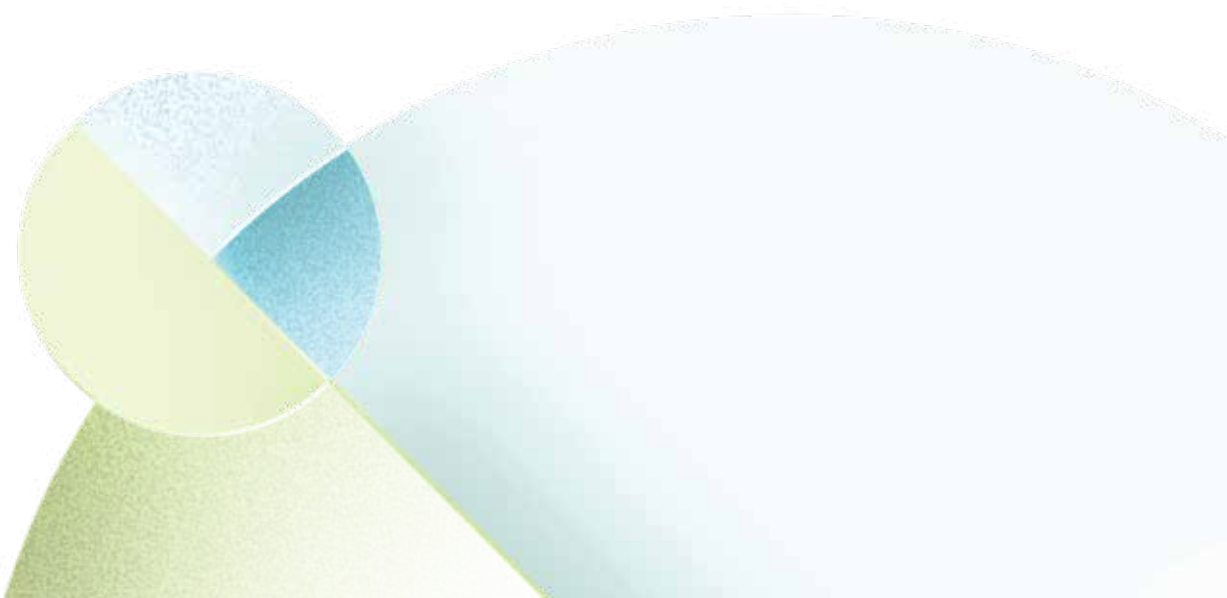
The widespread usage of social media has opened up innovative and diversified models for promoting CM culture. Through CMDF, the Government will encourage the industry to effectively utilise social media and related technology, integrating online and offline activities to enhance the accessibility and appeal of CM culture and knowledge. This aims to achieve the goal of popularising CM culture across all ages and strengthening cultural confidence.

Through the above goals and actions, Hong Kong will vigorously promote CM culture. Coupled with the publicity and guidance of correct knowledge, cross-sector and cross-institutional synergistic cooperation will be promoted to comprehensively popularise CM in diversified and innovative ways, thereby strengthening cultural confidence. The table below outlines the national policies corresponding to each action in this chapter:

Cultural Inheritance Action Plan Corresponding to National Policies		
Action	Implementation Details	National Policies
<b>Goal 7: Promoting Culture of Chinese Medicine</b>		
7.1	Disseminating knowledge on the appropriate selection of Chinese medicine for disease prevention and treatment	<i>The 14th Five-Year Plan:</i> Strengthen positive publicity and scientific guidance, vigorously publicise the achievements in the inheritance and innovative development of CM; promote CM medical institutions to carry out popular science activities such as health lectures
	Collaborate with CMCTRs, DHCs, NGOs providing CM services and CMHHK etc., to disseminate the latest information on outpatient, day-patient and inpatient CM services to the public	
	Guide the public to consult qualified CMPs, select registered pCms and purchase Chms from licensed CMs traders through information dissemination	

## Cultural Inheritance Action Plan Corresponding to National Policies

Action	Implementation Details	National Policies
<b>Goal 7: Promoting Culture of Chinese Medicine</b>		
<b>7.2</b> Fostering cross-sectoral collaboration to enhance cultural confidence in Chinese medicine	Leverage CMDF as a platform to promote collaboration among cross-sectoral organisations to advance the dissemination of CM culture, promote CMHHK and GCMTI to carry out CM popularisation work	<p><i>The 14th Five-Year Plan:</i> Strengthen the cultural development of CM institutions; promote the integration of CM culture throughout national education, further enriching CM cultural education</p> <p><i>The Implementation Plan for the Promotion of Traditional Chinese Medicine Culture during the 14th Five-Year Plan Period:</i> Build platforms for disseminating CM culture; extensively carry out CM popularity scientific work</p>
	Encourage diverse promotion projects, targeting the characteristics of different demographics, continuously make good use of social media and technology to launch promotional projects meeting their needs	



## Expected Policy Outcomes

The Government will actively encourage and support different stakeholders to jointly promote CM culture, comprehensively enhancing societal awareness of CM and cultural confidence. By 2030, the channels and formats for promoting CM will have increased significantly, with widespread implementation of promotion projects aimed at enhancing the public's proper use of CM and the

initiation of specific cross-sector collaborative projects. By 2035, cross-sector collaboration models will have matured, further broadening the reach of CM culture popularisation. More large-scale, cross-institutional CM cultural promotion projects will be implemented. The public will have a richer understanding of CM, making it a choice for daily health maintenance. Specific actions and implementation details are set out in the table below:

Cultural Inheritance Action Plan					
Action	Implementation Details	Short Term	Medium Term	Long Term	
<b>Goal 7: Promoting Culture of Chinese Medicine</b>					
7.1	Disseminating knowledge on the appropriate selection of Chinese medicine for disease prevention and treatment	Collaborate with CMCTRs, DHCs, NGOs providing CM services and CMHHK etc., to disseminate the latest information on outpatient, day-patient and inpatient CM services to the public	✓		
		Guide the public to consult qualified CMPs, select registered pCms and purchase Chms from licensed CMs traders through information dissemination	✓		
7.2	Fostering cross-sectoral collaboration to enhance cultural confidence in Chinese medicine	Leverage CMDF as a platform to promote collaboration among cross-sectoral organisations to advance the dissemination of CM culture, promote CMHHK and GCMTI to carry out CM popularisation work	✓	✓	✓
		Encourage diverse promotion projects, targeting the characteristics of different demographics, continuously make good use of social media and technology to launch promotional projects meeting their needs	✓	✓	✓

# Go Global

# Go Global

## Current Status

### 1. Global Trends in the Development of Traditional Medicine

As the world's most comprehensive traditional medical system, CM has deeply integrated its theoretical foundations and practical methods into the international health service framework. Relying on scientific progress and cultural accessibility, it has become the leading force in the field of traditional medicine. In terms of contributions to global health, CM directly addresses major health challenges through scientific innovation. Inspired by the ancient text *A Handbook of Prescriptions for Emergencies*, Tu Youyou's team extracted artemisinin, saving countless lives and earning the 2015 Nobel Prize, demonstrating the modern scientific value of CM. Acupuncture, as a core CM therapy, is practiced in 113 WHO member states, with 30 members implementing formal regulations framework [5], marking CM's transformation from cultural practice to institutionalised healthcare services. To further strengthening CM's global role, China signed a Memorandum of Understanding with the WHO in 2024, pledging USD \$5 million for 2024-2028 to support the international development of traditional medicine [6].

Traditional medicine services or products are widely adopted across numerous countries. According to a systematic review covering 14 countries and 40 studies, the prevalence of using traditional medicine services or products within the past 12 months ranged from 24% to 71.3% [7]. In recent years, with increasing interest in traditional medicine development, the number of countries formulating related policies has risen. Widespread interest among different members reflects the opportunities in international cooperation to expand the dissemination and application of safe and effective traditional medicine services, so as to improve the comprehensiveness of healthcare services.

In light of this, realising the potential benefits of traditional medicine through international cooperation is crucial. The Strategy outlines a clear direction [8], recommending that members adopt a patient-centred approach, integrate traditional and modern healthcare services, incorporate evidence-based, safe, and effective traditional medicine services into healthcare systems, and promote interprofessional and inter-level service collaboration. Member states are encouraged to integrate traditional medicine services into their national healthcare system frameworks, establishing robust mechanisms for quality assurance, safety monitoring, and effectiveness evaluation.

The Strategy highlights that the key to integrating specific traditional medicine services into healthcare systems lies in exploring, identifying, designing, and implementing the most appropriate interprofessional collaboration models and CPs. This promotes the integration of traditional medicine services with other healthcare services, especially at the primary care level. Furthermore, education and training for healthcare professionals regarding traditional medicine practices, safety considerations, and potential interactions between traditional medicine products and drug must be strengthened.

Regarding the regulation of traditional medicine products, 121 and 100 members have established or are in the process of developing national pharmacopoeias containing traditional medicine products, or monographs on traditional medicine products [9]. Although the number of members focused in this area is relatively high, regulatory approaches for traditional medicine products, standard-setting, and capacity building for testing technologies still require a higher degree of coordination on regional and international platforms to ensure medication safety.

## 2. Hong Kong's Strengths in Promoting CM Globally

Hong Kong possesses unique advantages and strategic positioning in advancing CM's global outreach, while the widespread global application of traditional medicine presents significant opportunities. Under the "One Country, Two Systems" framework, Hong Kong maintains close ties with the Mainland while possessing a highly internationalised legal, financial, and trade system, enabling it to serve as a "Super Connector" for CM to go global. As one of the world's freest economies, Hong Kong's free flow of capital, information, and talent, plus a simple and low-tax regime, provides a favorable environment for CM enterprises to establish regional headquarters, R&D centres and trade platforms.

International attention to the standards of traditional medicine products is increasing. High quality standards are not only crucial for ensuring medication safety but also serve as important technical foundations for the registration and circulation of traditional medicine products in global markets. CMRO of DH, as a WHO Collaborating Centre for Traditional Medicine, undertakes training on testing technologies related to traditional medicine. Simultaneously, DH has been actively participating in international platforms concerning traditional medicine product regulation. In the future, research achievements from GCMTI will be showcased through these platforms (see Action 5.1), allowing more countries to understand the high quality development and technical systems of CM, thereby enhancing Hong Kong's international reputation.

Hong Kong's mature model of ICWM service is replicable in other health systems and has significant value for promotion, serving as a model for the international community. CPGs and CPs designed for disease areas where CM holds distinct advantages (see Actions 1.2 and 2.1) not only form the foundation for the progressive development of local CM services but can also play a pivotal role globally if effectively promoted, further facilitating the dissemination of CM service models and standards to different countries or regions. Hong Kong's bilingual capabilities in Chinese and English facilitate the preparation of internationally recognised CPGs and CPs, training materials, and standards. Hong Kong is home to several world-class universities with strong research capabilities, offering CM and CMs pharmacy courses taught in English, attracting many international students and professionals. This foundation prepares Hong Kong to provide advanced training to overseas countries and regions in the future, exporting its CM development model.



Furthermore, Hong Kong regularly hosts international healthcare exhibitions, CM forums and academic conferences, demonstrating good international dissemination capabilities. These platforms can be leveraged to share Hong Kong's CM successful stories and enhance its international influence.

The successful experiences and outcomes of the objectives described in this Blueprint can effectively respond to the recommendations of the Strategy. In the long term, Hong Kong can export its experiences to different countries

or regions, showcasing an innovative CM development model, elevating the international exemplary reference value of Hong Kong's CM development and providing reference solutions for the global development of traditional medicine. **By transforming the future outcomes of the Blueprint into internationally applicable models and standard, Hong Kong will support the national strategy of globalising CM and enabling CM to benefit people worldwide.**

Relevant goals and actions for “Go Global” are listed below (see Table 5.1):

**Table 5.1 : Overview of goals and actions for go global**

### Goal 8: Facilitating the “Go Global” of Chinese Medicine

**Action 8.1** Promoting Hong Kong's Chinese medicine service model and international cooperation globally

**Action 8.2** Facilitating the international application of Chinese medicines standard and testing technologies

**Action 8.3** Establishing an international hub for Chinese medicine information exchange and innovation



## Goal 8: Facilitating the “Go Global” of Chinese Medicine

### Action 8.1

#### Promoting Hong Kong’s Chinese medicine service model and international cooperation globally

As international demand for traditional medicine service development grows, Hong Kong can implement strategic measures to promote the application of Hong Kong’s CM development models in global healthcare systems through diverse channels. To demonstrate international influence, the following strategies are considered:

#### Fostering international collaboration and dissemination to enhance the influence of Hong Kong’s CM CPGs and CPs:

1. Establish International Collaborative Partnerships: Proactively engage in international cooperation and partnerships to facilitate exchange of knowledge on the development and implementation experiences on CPGs and CPs. Specific measures include collaborating with various overseas medical institutions and universities, or establishing new cooperative alliances to assist countries or regions with limited experience in learning from Hong Kong’s future mature service model development methodologies.
2. Strengthen Promotion and Education: In the future, when experiences with innovative traditional CM service models mature, Hong Kong may commission higher education institutions to offer clinical training programmes for overseas healthcare professionals. To promote Hong Kong’s experiences more broadly, diversified channels such as websites, online seminars and social media can be used to disseminate Hong Kong’s CM CPGs and CPs to the world.

#### Establishing diverse collaborative platforms between CMHHK, universities, the Mainland and international partners to facilitate overseas promotion of CM service and training model

In the long term, CMHHK and universities can consider setting up the following Mainland and international cooperation platforms to further deepen related work:

1. Establish an international platform for showcasing service models in conditions for which CM demonstrates distinct advantages: Invite high level CM expert teams to Hong Kong for short-term practice and exchange, enhancing the content of CPGs and CPs, showcasing the strong advantages of the country’s CM services to the world;
2. Build an international advanced CM training platform: Invite elite Mainland CM teams to conduct high-end training for local and overseas CM professionals at CMHHK and higher education institutions, cultivating local CM clinical service and teaching talents. Subsequently, these high-end training outcomes can be transformed to offer medium to long term training programmes for overseas healthcare providers, facilitating the export of Hong Kong’s CM service models internationally;
3. Position Hong Kong as an international clinical research platform for CM application and pCms development: Collaborate with clinical research teams from Mainland provinces / cities and overseas to establish a multicentre research network. Use clinical research results to explain the effectiveness of CM and ICWM services to the international community; and

4. Establish international collaborative platform for clinical research on herb-drug interaction and international R&D platform for ICWM service model: Promote the integration of CM into other overseas healthcare systems predominantly based on WM.

## Action 8.2

### Facilitating the international application of Chinese medicines standard and testing technologies

#### GCMTI will participate in international organisations and platforms to showcase the application of CMs standard and testing methods

GCMTI will continue to actively participate in international standard-setting efforts. By deploying senior expert teams to join international organisations such as WHO International Regulatory Cooperation for Herbal Medicines (IRCH) network and the Western Pacific Regional Forum for the Harmonisation of Herbal Medicines (FHH), it will provide professional technical advice on key areas like CM testing methods and standard research. Research achievements will be presented on international platforms. Through international recognition of these research results, GCMTI will facilitate the alignment of CM testing methods and standard with international best practices and enhance the international influence of Hong Kong's CM testing and standards.

Concurrently, GCMTI will continue explore collaborative partnerships with internationally renowned research institutions to jointly develop impactful R&D projects on CM testing technologies. Through hosting international academic conferences, it will promote international exchange and cooperation on CM testing technologies, elevating the technical capabilities and international reputation of GCMTI.

#### GCMTI will offer training in CMs testing technologies to accelerate the international adoption of these technologies and standard

GCMTI will utilise the International Cooperation and Training Centre in its new building as a base to provide training on traditional medicine testing technologies for countries in the Western Pacific region and those along the Belt and Road Initiative. These applied technologies can assist various regions in establishing quality standard systems for traditional medicine and enhance local testing capabilities for traditional medicines, enabling more countries to recognise the high quality development of Hong Kong's traditional medicine testing technologies.

## Action 8.3

### Establishing an international hub for Chinese medicine information exchange and innovation

#### Facilitate various organisations to host regional and international CM conferences, exhibitions and events to showcase Hong Kong's successful CM development experience and models. This will help tell good CM stories of Hong Kong

By convening global experts and stakeholder representatives, Hong Kong will showcase the CPGs and CPs in collaboration with the Mainland, as well as CM testing methods and development models, to promote Mainland-international exchanges. Concurrently, through diverse narrative platforms, Hong Kong will showcase its successful experiences in CM development, highlighting its unique advantages in integrating traditional wisdom with modern science and promoting Hong Kong's solutions as globally

recognised models for traditional medicine development. This will position Hong Kong as a core hub for global CM innovation and dialogue, and realise the strategic value of leveraging Hong Kong's strengths to serve the country's needs.

Through the above goals and actions, Hong Kong

will transform its successful CM development experiences, promote them internationally across different platforms, align closely with the corresponding National development of CM and directions to facilitate CM's global outreach. The table outlines the national policies corresponding to each action in this chapter:

Go Global		
Action Plan Corresponding to National Policies		
Action	Implementation Details	National Policies
<b>Goal 8: Facilitating the “Go Global” of Chinese Medicine</b>		
8.1	Promoting Hong Kong's Chinese medicine service model and international cooperation globally	Engage in international collaboration and partnerships proactively to promote CPGs and CPs concerning CM and ICWM services of Hong Kong
		<i>The 14th Five-Year Plan</i> : Accelerate the open development of traditional CM; contribute to building a global community of health for all; deepen traditional CM exchange and cooperation
8.2	Facilitating the international application of Chinese medicines standard and testing technologies	Showcase application of CMs standard and testing methods through GCMTI's participation in international organisations and platforms
		<i>Opinions on Improving the Quality of Traditional Chinese Medicine and Promoting the High-Quality Development of the Traditional Chinese Medicine Sector</i> : Promote the open development of CMs; facilitate higher level opening-up, deepen cooperation with international organisations, actively participate in the revision of international pharmacopoeias for herbal medicines and international regulatory rules for CMs and promote the establishment of an international standardisation system for CMs
		<i>Action Plan for Standardization of Traditional Chinese Medicine (2024–2026)</i> : Advance the internationalisation of traditional CM standards
8.3	Establishing an international hub for Chinese medicine information exchange and innovation	Support various organisations to host regional and international CM conferences, exhibitions and events, tell good CM stories of Hong Kong and assist the Mainland and overseas market in knowing CMs products
		<i>The 14th Five-Year Plan</i> : Accelerate the open development of traditional CM; contribute to building a global community of health for all; deepen traditional CM exchange and cooperation
		<i>The Highlands Construction Plan</i> : Contribute to the “Belt and Road” Initiative, building an internationalised highland; establish and improve new mechanisms to promote CM services and products going global, assisting the country's “Belt and Road” construction

## Expected Policy Outcomes

To ensure the steady advancement of Hong Kong's goal of assisting the going global of CM, efforts will focus on comprehensively enhancing its international recognition and influence. By 2030, it is expected that Hong Kong will have initially established a demonstration status and cooperative network within the region across multiple dimensions including CM service models, standard-setting and professional training. By 2035, the aim is to realise its role

as a global hub for information exchange and innovation cooperation in the field of traditional medicine. Through continuously hosting high level international conferences and exhibitions, Hong Kong will deepen the international recognition of its CM development achievements, thereby assisting the country in strengthening its voice and influences within the global traditional medicine system. Specific actions and implementation details are set out in the table below:

Go Global Action Plan					
Action	Implementation Details	Short Term	Medium Term	Long Term	
<b>Goal 8: Facilitating the “Go Global” of Chinese Medicine</b>					
8.1	Promoting Hong Kong's Chinese medicine service model and international cooperation globally	Engage in international collaboration and partnerships proactively to promote CPGs and CPs concerning CM and ICWM services of Hong Kong	✓	✓	✓
8.2	Facilitating the international application of Chinese medicines standard and testing technologies	Showcase application of CMs standard and testing methods through GCMTI's participation in international organisations and platforms	✓	✓	✓
		Accelerate the adoption of technologies and standard in the international community through GCMTI's provision of training on CMs testing technologies	✓	✓	✓
8.3	Establishing an international hub for Chinese medicine information exchange and innovation	Support various organisations to host regional and international CM conferences, exhibitions and events, tell good CM stories of Hong Kong and assist the Mainland and overseas market in knowing CMs products	✓	✓	✓

# Institutional Framework for Implementing the Blueprint Measures

The Blueprint covers five key domains, namely CM services, CM profession, CMs development, cultural inheritance and go global. The goals and actions across these areas involve extensive dimensions, necessitating the concerted efforts of various bureaux, departments, public organisations and the industry, to ensure orderly and proper implementation of all measures. In this regard, besides establishing working mechanisms for individual action plans, it is also essential to further strengthen the institutional framework and policy support for the CM profession as a whole. This aims to achieve greater consistency between laws and regulations and the use of public resources with the policy direction of the Blueprint, assisting stakeholders in advancing the comprehensive, high quality and high level development of CM.

## 1. Organisational Structure

### 1.1 Policy coordination

CMU of HHB will continue to assume the role of policy coordinator for CM development, oversee and support the implementation of new initiatives under the Blueprint. CMU will enhance coordination on future matters regarding CM services development, regulation, professional development, cultural popularisation and go global, and will actively coordinate and communicate with various units including PHCC, DH, HA, CMCHK, CMPR, CMHHK, and GBAICTI, etc. CMU will also maintain close liaison with various Mainland provincial and municipal units on CM subjects, jointly advancing and accomplishing the eight goals of the Blueprint.

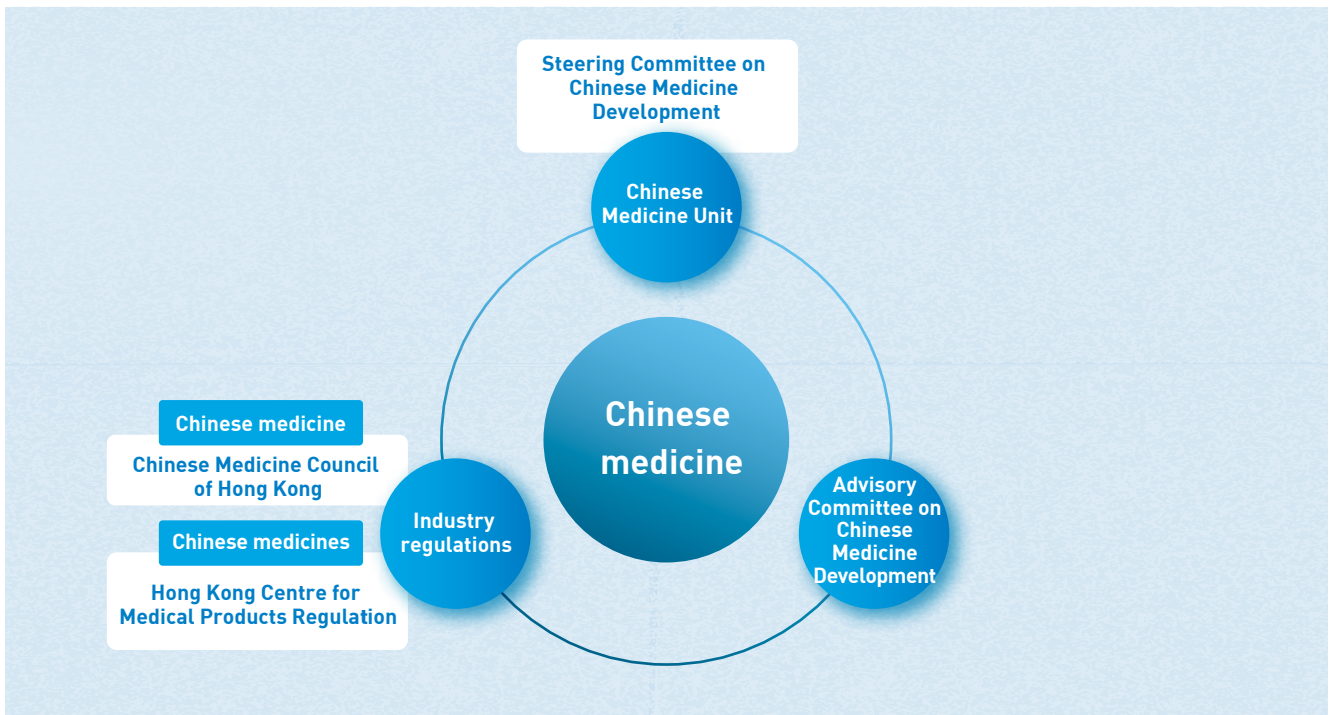
### 1.2 Steering and advisory structure

The Government established CMDC in 2013, under which set up the CM Practice Subcommittee and the CMs Industry Subcommittee, with non-official members come from CM, CMs, various healthcare and professional sectors. Over the years, CMDC has provided advice to the Government on the direction and long term strategy for promoting the development of CM and CMs in Hong Kong.

As the scope of policy measures for CM development becomes increasingly broad, to effectively strengthen coordination among different implementation units and departments and to consult and gather opinions from the CM industry on various development issues in a focused manner, it is proposed to restructure the CM steering and advisory structure after the current term of CMDC ends on 31 January 2027. This includes establishing a Steering Committee on CM Development, chaired by the Secretary for Health, with representatives from different policy bureaux and departments to facilitate cross-departmental coordination and collaboration and more effectively implement measures involving different policy areas. At the same time, we propose establishing an Advisory Committee on CM Development, chaired by the Commissioner for CM Development, with participation from relevant experts and representatives. This aims to provide channels for gathering opinions from local and international experts, as well as the CM industry during the process of formulating CM development policies. Depending on the nature of the problem, dedicated working groups may be formed to deliberate and follow up on specific issues, such as exploring the necessity and future direction of establishing a dedicated institution to promote professional development of CM, results of deliberation will be presented to the Steering Committee on CM Development for further consideration.

Figure 4.1

### Recommended updated organisational structure



### 1.3 Utilising data to support policy formulation

To gain a more comprehensive understanding of the industry’s practice and public demand for CM services, we plan to establish a standing mechanism for collecting and analysing CM related data to support policy formulation and long term development planning. Methods may include, but not limited to, inviting registered CMPs to provide practice related information when renewing their Practising Certificates. This allows the Government to refer to first-hand information from the sector’s frontline to formulate appropriate policies that respond to the needs of the public and the industry.

## 2. Regulatory Framework

In recent years, the service model and scope of CM services have developed rapidly, with clinical work and medical functions of CMPs evolving

continuously. Apart from general outpatient services, HA’s ICWM services has been expanding, covering an increasingly diverse range of disease types and healthcare settings. In primary healthcare, CM elements in the DHCs services have been added, including the encouragement of CMPs to join the DHC network as service providers. Furthermore, CMHHK, which commenced operations by phases in December 2025, provides diversified CM services, including outpatient, day-patient and inpatient services. It will fully launch six specialised CM services, namely Internal Medicine in CM, External Medicine in CM, Gynaecology in CM, Paediatrics in CM, Orthopaedics and Traumatology in CM and Acupuncture and Moxibustion in CM, and will progressively launch 23 special disease programmes. Following passage of relevant amendments to the *Allied Health Professionals Ordinance* by the Legislative Council in July 2025, specified allied health professionals

(including physiotherapists, occupational therapists, radiographers, and medical laboratory technologists) can also accept referrals from registered CMPs. This demonstrates that the medical functions of CMPs are no longer limited to solo practice in outpatient setting, but also require the ability to work in hospital environment and to engage in interprofessional collaboration.

The Ordinance has been in effect for over two decades since its passage in 1999. To ensure the CM profession keeps pace with development, the Government will review the latest development of the industry and consider revising the regulatory framework under the Ordinance. In addition, the Government will also review other laws relevant to the statutory medical functions of CMPs. In light of the evolving clinical role and professional development of CM, the Government will explore the feasibility of amending those legislations related to the medical functions and indemnification of CMPs as appropriate.

Regarding CMs regulatory system, following the establishment of CMPR by the end of 2026, it will oversee WMs, CMs (including the CMs trader licensing system and the pCms registration system) and regulate various types of medical devices (including CM medical devices). The latest development and changes in the CMs sector will be taken into account at that time to establish a regulatory system with distinctive CM features (Details are mentioned in the Chapter of “CMs Development”).

In response to the establishment of CMPR and to align with the policy directions of the Blueprint, the composition and functions of CMCHK will also be updated and enhanced. In the long term, to improve the quality of CM services, the Government will also explore ways to better regulate healthcare institutions primarily providing CM services.

### 3. Industry Support

Since its official launch in June 2019, CMDF was injected with a total of \$1 billion and has all along been an important platform for the Government to support the CM industry. CMDF provides targeted subsidies to the industry in various aspects, including professional continuing education, improvement on facilities and qualities of clinics and warehouse logistics, enhancement on pCms quality and manufacturing system and pCms registration etc. At the same time, CMDF proactively commission different organisations to conduct large-scale training, publicity and research projects through the Strategic Theme Commissioned Project Funding Programme, and roll out more programme to build up the industry’s capability. This aims to support Hong Kong’s CM industry and promote the needs of CM development more effectively and appropriately.

In the future, CMU will continue to work closely with the Advisory Committee of CMDF and its implementation agent. In line with the various policy directions of the Blueprint and the latest industry developments, CMU will timely update the existing funding schemes and assessment mechanisms such as inviting Mainland and overseas experts to provide assessment opinions, expanding the scope of CM Industry Training Funding Scheme to cover other healthcare professionals and students to encourage CM-related interprofessional collaboration and support training of various types of top-tier talents and promoting universities and the industry to conduct CM development-related research through commissioned projects.

# Conclusion

Building upon the laid foundation and society's recognition to CM, various actions outlined in the Blueprint will drive further development of CM in Hong Kong. This aims to inherit the essence of the Motherland's medicine and Chinese civilisation, and maintaining its authentic traditions while pursuing innovative breakthroughs. HHB, together with all relevant bureaux, departments and institutions, will proactively implement the various actions to enhance service quality and support the national promotion for CM to go global.

# Reference

1. Chinese Medicine Council of Hong Kong. "List of CME Programme Providers accredited by the Chinese Medicine Practitioners Board." Chinese Medicine Council of Hong Kong, [www.cmchk.org.hk/cmp/pdf/List\\_of\\_CME\\_Programme\\_Providers\\_accredited\\_by\\_the\\_CMPB.pdf](http://www.cmchk.org.hk/cmp/pdf/List_of_CME_Programme_Providers_accredited_by_the_CMPB.pdf). Accessed 03 Jan. 2026.
2. Sackett, D L et al. "Evidence based medicine: what it is and what it isn't." *BMJ (Clinical research ed.)* vol. 312, 7023 (1996): 71-72.
3. World Health Organization. "Number of clinical trials by year, country, WHO region and income group (2020-2024)." *Global Observatory on Health Research and Development*. Dec. 2024, [www.who.int/observatories/global-observatory-on-health-research-and-development/monitoring/number-of-clinical-trials-by-year-country-who-region-and-income-group](http://www.who.int/observatories/global-observatory-on-health-research-and-development/monitoring/number-of-clinical-trials-by-year-country-who-region-and-income-group). Accessed 10 Dec. 2025.
4. People's Republic of China, National Medical Products Administration, Centre for Drug Evaluation. "2024 Drugs Review Report.", 2025.
5. World Health Organization. "WHO global report on traditional and complementary medicine 2019.", Geneva: World Health Organization, 2019.
6. World Health Organization. "China and WHO deepen strategic partnership to lead global traditional medicine advancements." *World Health Organization*, [www.who.int/news/item/09-11-2024-china-and-who-deepen-strategic-partnership-to-lead-global-traditional-medicine-advancements](http://www.who.int/news/item/09-11-2024-china-and-who-deepen-strategic-partnership-to-lead-global-traditional-medicine-advancements) Accessed 10 Dec. 2025.
7. Lee, E. Lyn, et al. "Prevalence of use of traditional, complementary and alternative medicine by the general population: a systematic review of national studies published from 2010 to 2019." *Drug safety* vol. 45,7 (2022): 713-735.
8. World Health Organization. "Global Traditional Medicine Strategy 2025-2034.", Geneva: World Health Organization, 2025.
9. World Health Organization. "Draft traditional medicine strategy: 2025-2034" World Health Organization, 10 Apr. 2024, [cdn.who.int/media/docs/default-source/tci/draft-traditional-medicine-strategy-2025-2034.pdf](http://cdn.who.int/media/docs/default-source/tci/draft-traditional-medicine-strategy-2025-2034.pdf). Accessed 10 Dec. 2025.

# List of Abbreviations

<b>CM</b>	Chinese medicine
<b>CMCHK</b>	Chinese Medicine Council of Hong Kong
<b>CMCTRs</b>	Chinese Medicine Clinics cum Teaching and Research Centres
<b>CMDC</b>	Chinese Medicine Development Committee
<b>CMDF</b>	Chinese Medicine Development Fund
<b>CME</b>	Continuing Education in Chinese Medicine
<b>CMHHK</b>	The Chinese Medicine Hospital of Hong Kong
<b>CMPR</b>	Hong Kong Centre for Medical Products Regulation
<b>CMPs</b>	Chinese medicine practitioners
<b>CMPs Board</b>	Chinese Medicine Practitioners Board
<b>CMRO</b>	Chinese Medicine Regulatory Office
<b>CMs</b>	Chinese medicines
<b>CMU</b>	Chinese Medicine Unit
<b>CPGs</b>	Clinical practice guidelines
<b>CPs</b>	Clinical pathways
<b>CUHK</b>	The Chinese University of Hong Kong
<b>Chms</b>	Chinese herbal medicines
<b>DH</b>	Department of Health
<b>DHCs</b>	District Health Centres and District Health Centre Expresses
<b>EHCV</b>	Elderly Healthcare Voucher
<b>eHRs</b>	Electronic health records
<b>eHealth</b>	Electronic Health Record Sharing System
<b>FHH</b>	Forum for the Harmonisation of Herbal Medicines
<b>GBA</b>	Greater Bay Area
<b>GBAICTI</b>	Greater Bay Area International Clinical Trial Institute
<b>GCMTI</b>	Government Chinese Medicines Testing Institute
<b>GMP</b>	Good manufacturing practice
<b>HA</b>	Hospital Authority
<b>HHB</b>	Health Bureau
<b>HKBU</b>	Hong Kong Baptist University

<b>HKC</b>	Certificate of registration of proprietary Chinese medicine
<b>HKCMMS</b>	Hong Kong Chinese Materia Medica Standards
<b>HKMU</b>	Hong Kong Metropolitan University
<b>HKU</b>	The University of Hong Kong
<b>ICWM</b>	Integrated Chinese-Western medicine
<b>IND</b>	Investigational New Drug
<b>IRCH</b>	International Regulatory Cooperation for Herbal Medicines
<b>ISO</b>	International Organization for Standardization
<b>Licensing Examination</b>	Chinese Medicine Practitioners Licensing Examination
<b>NATCM</b>	National Administration of Traditional Chinese Medicine
<b>NDA</b>	New Drug Applications
<b>NGOs</b>	Non-governmental organisations
<b>NMPA</b>	National Medical Products Administration
<b>pCms</b>	Proprietary Chinese medicines
<b>PHCC</b>	Primary Healthcare Commission
<b>R&amp;D</b>	Research and development
<b>THEi</b>	Technological and Higher Education Institute of Hong Kong
<b>The 14th Five-Year Plan</b>	Development Plan for Traditional Chinese Medicine during the 14th Five-Year Plan Period
<b>The Blueprint</b>	Chinese Medicine Development Blueprint
<b>The Government</b>	The Hong Kong Special Administrative Region Government
<b>The Highlands Constriction Plan</b>	Construction Plan for the Chinese Medicine Highlands in the Guangdong-Hong Kong-Macao Greater Bay Area (2020–2025)
<b>The List</b>	A list of conditions for which CM demonstrates distinct advantages and significant effectiveness
<b>The Ordinance</b>	Chinese Medicine Ordinance
<b>The Register</b>	Primary Care Register
<b>The Strategy</b>	Global Traditional Medicine Strategy 2025–2034
<b>WHO</b>	World Health Organization
<b>WM</b>	Western medicine
<b>WMs</b>	Western medicines

# Glossary of Terms

<b>Allied health professionals</b>	Healthcare professionals other than CMPs, doctors, dentists or nurses. They have specialised expertise in preventing, diagnosing and treating a range of conditions and illnesses. In Hong Kong, allied health professionals include audiologists, clinical psychologists, dietitians, occupational therapists, optometrists, orthoptists, physiotherapists, podiatrists, prosthetists and orthotists, speech therapists, dispensers, radiographers, medical laboratory technologists and medical social workers.
<b>Chinese Medicine Clinics cum Training and Research Centres</b>	Run by HA, NGOs and universities under a tripartite collaboration model, with daily operation undertaken by the respective NGOs. CMCTRs provide government-subsidised, non-government-subsidised and Civil Service CM Clinic services, support ICWM services provided by HA, and bear the functions of nurturing CM talent and taking forward scientific research projects.
<b>Chinese Medicine Development Fund</b>	As the first dedicated fund set up to support CM development, CMDF has been injected with a total of \$1 billion since its official launch in 2019. It aims to enhance the overall standard of CM sector to promote comprehensive, high quality and high level development of CM in Hong Kong. CMU of HHB is responsible for supervising CMDF while the Hong Kong Productivity Council serve as the implementation agent.
<b>Chinese medicine granules for prescription</b>	CM granules for prescription are produced from decoction pieces of CMs through water extraction, separation, concentration, drying and granulation. Under the guidance of the theories in CM, they are dispensed according to clinical prescriptions and are intended to be dissolved in water for oral administration by patients. These CM granules for prescription can be classified into single CM and compound CM (prescriptions composed of more than one CMs).
<b>Clinical pathway</b>	A structured care plan designed for specific patient groups within a defined timeframe to promote interprofessional shared decision-making and coordinate treatment processes.
<b>Competence-based Chinese medicine continuing education mechanism</b>	Based on a clear, effective, and measurable core competence framework, focusing on how learning can help to enhance CMPs' performance, service quality, and healthcare outcomes, to promote lifelong development of core competence.
<b>Competence-based medical education</b>	Adopts a result-oriented approach in designing, implementing and evaluating medical education under a structured core competence framework, in a bid to cultivating healthcare professionals who possess specific professional competence and are able to meet societal healthcare needs.
<b>Core competence standard / framework</b>	It explicitly outlines the key knowledge, skills, and professional attributes that healthcare professionals must possess at various training stages, providing clear standards for medical training institutions and students, while addressing societal expectations of healthcare professionals.
<b>Counterfeit proprietary Chinese medicine products</b>	Referring to products available on the market whose names or packaging closely resemble those of pCms, thereby easily misleading the public into believing that they possess CM therapeutic efficacy. These products are marketed as food products, with nutrition labels, and are not regulated under the Ordinance.

<b>District Health Centres</b>	A primary healthcare service hub launched by the Government to develop a district-based, family-centric community health system. It aims at enhancing public awareness on health and self-health management, and establishing a prevention-focused healthcare system through health promotion, disease prevention, chronic disease management and supportive care. Operated by NGOs, these centres provide community-oriented continuity of care.
<b>District Health Centre Expresses</b>	In the remaining districts where full-fledged DHCs would yet to be set up, interim DHC Expresses have been set up to provide key primary healthcare services including health promotion and education, health risk factors assessment and chronic disease management, laying an early foundation for building a long-term prevention-focused primary healthcare system. These DHC Express services will migrate as appropriate to the local DHC at a later stage.
<b>District Health Centre network</b>	DHC Operator will procure services from non-government entities in the community and form DHC network. DHC network service providers include allied health professionals (physiotherapists, occupational therapists, dietitians, podiatrists, speech therapists, optometrists) and CMPs. To enhance the accessibility of clients to DHC services, healthcare practitioners from nearby districts can also join DHC network.
<b>Evidence-based medicine</b>	The conscientious, explicit and judicious use of current best evidence in making decisions about the care of individual patients. Implementing evidence-based medicine requires healthcare professionals to integrate research evidence, clinical experience and patient preferences into clinical practice.
<b>Excipients</b>	Referring to a substance or compound that is used or intended to be used in the preparation or production of the medicine but which is not an active ingredient of the medicine. Common excipients include colourants, preservatives, binding agents, etc.
<b>Integrated Chinese-Western Medicine services of Hospital Authority</b>	HA provides ICWM services to eligible HA patients under designated disease areas at designated hospital sites in public hospitals under its management. The CMPs will provide CM consultation to the enrolled patients at designated hospital sites. CM treatment (e.g. CMs, acupuncture etc.) will be provided according to clinical assessment and clinical protocols jointly formulated by Western and Chinese Medical Teams, enabling co-care of patients with doctors.
<b>Interprofessional collaboration</b>	Various healthcare professionals working together to provide a broad range of services in a coordinated approach.
<b>One institute, one center</b>	Referring to GBAICTI located in the Hong Kong Park, and the GBA International Clinical Trials Center situated in the Shenzhen Park of the Hetao Shenzhen-Hong Kong Science and Technology Innovation Co-operation Zone.
<b>One zone, two parks</b>	Referring to the Hetao Shenzhen-Hong Kong Science and Technology Innovation Co-operation Zone, consisting of the Hong Kong Park and the Shenzhen Park.
<b>Pharmaceutical preparations of medical institutions (Hospital preparations)</b>	Referring to the fixed prescription preparations that are subject to approval and are confected by medical institutions for their own use in light of the clinical needs. The pharmaceutical preparations made by medical institutions shall be those unavailable in the market and shall be used solely within the designated medical institutions.

<b>Post-registration clinical practice training</b>	A systematic clinical practice and training programme designed to align with the core competence standard for CMPs of Hong Kong in the future, providing foundational training for CMPs in the early stages of practice. The training focuses on the core competence of CMPs, strengthening the CM principles understanding and enhancing the clinical capabilities of CMPs in a real-world setting with supervision, evaluation and feedback from senior CMPs. The programme requires accreditation in relation to teaching venues and instructor qualifications. Upon completion of the training, the CMPs are equipped with sufficient clinical capabilities to handle common disease areas in the community under the primary healthcare setting. It may progress to advanced training at CMHHK.
<b>Primary healthcare</b>	Primary healthcare is the first point of contact for individuals and families in a continuous healthcare process in the living and working community which entails the provision of accessible, comprehensive, continuing, coordinated and person-centred care.
<b>Products falsely marketed as non-proprietary Chinese medicine products</b>	Referring to products available on the market whose formulations that are almost identical to those of traditional pCms or registered pCms, but with the addition of other food ingredients to the formula. These products are marketed as food products with nutrition labels in order to circumvent regulation under the Ordinance.
<b>Public health emergency</b>	It refers to major events causing or likely to cause serious harm to the health of a large population, including major outbreaks of infectious diseases, diseases of unknown origin occurring in groups, major food poisoning incidents, and other serious threats to public health.
<b>Secondary healthcare</b>	Secondary healthcare refers to acute and convalescent inpatient care, day surgery, specialist outpatient, and Accident and Emergency Department services, generally requiring more specialised knowledge, skills or equipment than primary healthcare services.
<b>Tertiary healthcare</b>	Tertiary healthcare refers to highly complex and costly hospital care services, usually with the application of advanced technology and multi-disciplinary specialised expertise.
<b>Various stages of Chinese medicine training</b>	Includes undergraduate CM training, post-registration clinical practice training, and subsequent CM advanced training, etc.
<b>“5+3”</b>	A talent nurturing model for CM professionals in the Mainland. Upon completing 5 years of undergraduate medical education, students undergo 3 years of standardised training for CMPs.

# Appendix A : Summary Table of Actions

Chinese Medicine Services Action Plan					
Action	Implementation Details	Short Term	Medium Term	Long Term	
<b>Goal 1: Enhancing Clinical Services Excellence</b>					
1.1	Defining the role of Chinese medicine services within the healthcare system	Formulate a list of conditions for which CM demonstrates distinct advantages and develop corresponding CM service programmes at primary, secondary and tertiary healthcare	✓	✓	
1.2	Improving the quality and clinical effectiveness of Chinese medicine services	Formulate CPGs with distinctive CM features and facilitate the formulation of CPGs for herb-drug interaction	✓	✓	✓
1.3	Upgrading Chinese medicine services through technological empowerment	Utilise technology to conduct big data research and analyse CM and WM eHRs data		✓	✓
<b>Goal 2: Establishing an Interprofessional Service System</b>					
2.1	Deepening interprofessional collaboration mechanisms for Chinese medicine services	Develop CPs of conditions for which CM and ICWM demonstrate distinct advantages, implement interprofessional collaboration mechanisms, regularly review and update CPGs and CPs for clinical application	✓	✓	✓

## Chinese Medicine Services Action Plan

Action	Implementation Details	Short Term	Medium Term	Long Term	
<b>Goal 2: Establishing an Interprofessional Service System</b>					
<b>2.2</b>	Integrating into the healthcare system fully and fostering cross-institutional collaboration	Promote horizontal and vertical integration of CM services among different institutions within the healthcare system		✓	✓
		CMHHK collaborates with local, the Mainland and international partners to jointly establish a CM service standard setting platform		✓	✓
		Expand ICWM services within HA to cover more WM specialised disease areas	✓	✓	✓
		Formulate CPGs and CPs of CM for public health emergency preparedness	✓	✓	✓
<b>2.3</b>	Strengthening the role of Chinese medicine in primary healthcare	Formulate CM service model and strengthen its development in primary healthcare	✓	✓	✓
		Regularly review the supply and demand for government-subsidised CM outpatient services through re-provisioning some CMCTRs and make appropriate adjustment to the service provision	✓	✓	✓
		Request CMPs participating in government-subsidised primary healthcare programmes (including CMPs joining EHCV Scheme and serving as DHCs network service providers, etc.) to enrol in the Register	✓	✓	
		Promote the use of eHealth by CMPs to facilitate interprofessional information exchange and collaboration	✓	✓	

## Chinese Medicine Profession Action Plan

Action	Implementation Details	Short Term	Medium Term	Long Term	
<b>Goal 3: Leading Chinese Medicine Professional Development</b>					
<b>3.1</b>	Elevating competence standard of the Chinese medicine profession	Implement competence-based CM education, formulate the core competence standard for CMPs to serve as the benchmark for teaching, assessment and accreditation	✓	✓	✓
		Optimise undergraduate CM curriculum, establish appropriate teaching and assessment models and promote resources sharing among the Schools of CM	✓	✓	
		Reform the Licensing Examination	✓	✓	
		Strengthen the regulation of CM practice, continuously review and optimise the code of professional conduct and guidelines for CMPs and establish a quotable qualification list accreditation system	✓	✓	✓
<b>3.2</b>	Building a more comprehensive Chinese medicine talent cultivation system	Foster the review and optimisation of the CM continuing education mechanism		✓	✓
		Optimise HA's training programme for registered CMPs	✓	✓	
		Establish a post-registration clinical practice training system		✓	✓
		Explore the establishment of advanced training in specialised CM services and special diseases programmes at CMHKK		✓	✓
		Explore the long-term development directions for CM specialty		✓	✓

## Chinese Medicine Profession Action Plan

Action	Implementation Details	Short Term	Medium Term	Long Term	
<b>Goal 3: Leading Chinese Medicine Professional Development</b>					
<b>3.2</b>	Building a more comprehensive Chinese medicine talent cultivation system	Encourage different institutions to develop professional training courses related to medical functions of CMPs, CM primary healthcare and interprofessional collaboration	✓		
		Roll out top-tier CM talents cultivation programmes	✓	✓	✓
		Explore the optimisation of the limited registration regime for CMPs	✓	✓	✓
<b>3.3</b>	Empowering the sector to continuously advance Chinese medicine professional development	Establish a dedicated working group to hold ongoing discussions on topics related to CM professional development, such as optimising undergraduate CM curriculum, reforming the Licensing Examination, enhancing post-registration clinical training, optimising CM continuing education mechanism and exploring the long-term development directions for CM specialty	✓	✓	✓
		Strengthen talent exchange and training between Hong Kong and the Mainland	✓	✓	✓
		Facilitate CM sector to establish a more comprehensive CM professional development plan with CMDF funding	✓	✓	✓
		Continuously review and strengthen the functions of CMCHK	✓	✓	✓

## Chinese Medicines Development Action Plan

Action	Implementation Details	Short Term	Medium Term	Long Term	
<b>Goal 4: Enhancing Chinese Medicines Quality and Standard</b>					
<b>4.1</b>	Strengthening quality management of Chinese medicines	Develop a regulatory system with distinctive CM features, revise the current legislative definition of pCms, establish an appropriate regulatory framework for single CM granules for prescription, review and optimise the existing legislations and relevant guidelines concerning pCms registration and clinical research	✓	✓	
<b>4.2</b>	Implementing good manufacturing practice (GMP) for proprietary Chinese medicines fully	Formulate a schedule for the phased implementation of GMP for pCms, optimise CMDf to support the industry for GMP upgrades in relation to pCms	✓	✓	✓
<b>Goal 5: Contributing to the Establishment of International Standard for Chinese Medicines</b>					
<b>5.1</b>	Leveraging the Government Chinese Medicines Testing Institute to establish standard for Chinese medicines	Introduce and conduct research on advanced technologies of CMs testing		✓	✓
		Develop HKCMMS into an international quality evaluation standard for Chms		✓	✓
<b>5.2</b>	Deepening collaboration between the Government Chinese Medicines Testing Institute and institutions in the Mainland and the Greater Bay Area	Sign cooperative agreements with multiple institutions related to CMs testing in the Mainland and GBA	✓	✓	✓
		Continuously organise GBA conference on testing technologies of CMs	✓	✓	✓

## Chinese Medicines Development Action Plan

Action	Implementation Details	Short Term	Medium Term	Long Term	
<b>Goal 6: Driving Chinese Medicine Innovation in Research and Industry</b>					
<b>6.1</b>	Promoting innovation of Chinese medicines and clinical trials	Build a clinical research network with the Mainland that complies with both national and international standard through GBAICTI	✓	✓	
		Provide one-stop advisory service to the industry through CMPR		✓	✓
<b>6.2</b>	Empowering the industry to cultivate talents in Chinese medicines	Establish core competence requirement for CMs talents	✓		
		Review the requirement and mechanism of qualification and continuing professional development for the responsible persons and their deputies (i.e. nominated persons and deputies) across relevant CMs traders licenses		✓	✓
		Support the industry to develop a systematic professional training framework and mechanism, support the professional training for CMs industry through GCMTI		✓	✓

## Cultural Inheritance Action Plan

Action	Implementation Details	Short Term	Medium Term	Long Term
<b>Goal 7: Promoting Culture of Chinese Medicine</b>				
<b>7.1</b>	Disseminating knowledge on the appropriate selection of Chinese medicine for disease prevention and treatment	Collaborate with CMCTRs, DHCs, NGOs providing CM services and CMHHK etc., to disseminate the latest information on outpatient, day-patient and inpatient CM services to the public  ✓		
		Guide the public to consult qualified CMPs, select registered pCms and purchase Chms from licensed CMs traders through information dissemination  ✓		
<b>7.2</b>	Fostering cross-sectoral collaboration to enhance cultural confidence in Chinese medicine	Leverage CMDF as a platform to promote collaboration among cross-sectoral organisations to advance the dissemination of CM culture, promote CMHHK and GCMTI to carry out CM popularisation work  ✓	✓	✓
		Encourage diverse promotion projects, targeting the characteristics of different demographics, continuously make good use of social media and technology to launch promotional projects meeting their needs  ✓	✓	✓

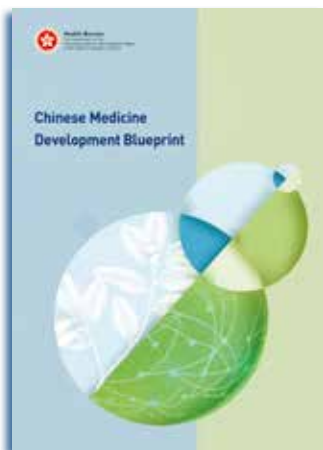
## Go Global Action Plan

Action	Implementation Details	Short Term	Medium Term	Long Term	
<b>Goal 8: Facilitating the “Go Global” of Chinese Medicine</b>					
<b>8.1</b>	Promoting Hong Kong’s Chinese medicine service model and international cooperation globally	Engage in international collaboration and partnerships proactively to promote CPGs and CPs concerning CM and ICWM services of Hong Kong	✓	✓	✓
<b>8.2</b>	Facilitating the international application of Chinese medicines standard and testing technologies	Showcase application of CMs standard and testing methods through GCMTI’s participation in international organisations and platforms	✓	✓	✓
		Accelerate the adoption of technologies and standard in the international community through GCMTI’s provision of training on CMs testing technologies	✓	✓	✓
<b>8.3</b>	Establishing an international hub for Chinese medicine information exchange and innovation	Support various organisations to host regional and international CM conferences, exhibitions and events, tell good CM stories of Hong Kong and assist the Mainland and overseas market in knowing CMs products	✓	✓	✓

# Appendix B : Membership List of the Chinese Medicine Development Blueprint Subcommittee under the Chinese Medicine Development Committee

<b>Chairman:</b>	Commissioner for Chinese Medicine Development
<b>Ex-officio Members:</b>	Representative(s) from the Health Bureau Representative(s) from the Department of Health Representative(s) from the Hospital Authority Representative(s) from The Chinese Medicine Hospital of Hong Kong
<b>Non-official Members:</b>	Chairman of the Chinese Medicine Practice Subcommittee (Professor CHAN Wing-kwong) Chairman of the Chinese Medicines Industry Subcommittee (Mr LI Ying-sang, Tommy) Convener of the Working Group on the Development of Chinese Medicine Services (Dr LIONG Ching) Convener of the Working Group on the Development of Chinese Medicine Industry and Cultural Popularisation (Professor AU Ching-tung, Dawn) Convener of the Working Group on the Development of Chinese Medicine Profession and Talent Cultivation (Professor CHUNG Kiu-lam, Kenny) Representative of the School of Chinese Medicine, Hong Kong Baptist University (Professor LI Min) Representative of the School of Chinese Medicine, The Chinese University of Hong Kong (Dr CHAN Sze-nga, Sarah) Representative of the School of Chinese Medicine, The University of Hong Kong (Professor SHEN Jiangang) Professor CHAIR Sek-ying Mr CHAN Lin-chuen Ms CHAN Wing-yin, Jojo Mr CHAN Yu-ling, Abraham Mr CHUA Hoi-wai Mr KOO Hoi-lun Dr KWOK Tsz-kin Mr LAM Chun-hong Professor LAM Lo-kuen, Cindy Professor LEE Ming-yuen, Simon Professor LEUNG Ka-kit, Gilberto Professor TSANG Wing-hong, Hector Dr WONG Hung-ngan Mr WONG Lup-hoi, Nicholas





The cover of the Blueprint reinterprets the traditional gourd motif through a modern cubist design, symbolising the multi-dimensional policy vision proposed in the Blueprint and reflecting the comprehensive advancement of CM across various domains, including CM Services, CM Profession, CMs Development, Cultural Inheritance and Go Global. The gourd, a symbol of CM, represents the healing spirit of serving the community with CM and embodies qualities of a vessel. This extends to Hong Kong's role as a convergence of East and West, container of the preservation of traditional CM wisdom and integration with international standards and innovation.

On the left side of the gourd, the inclusion of *Aquilaria sinensis*, a Chinese medicinal herb native to Hong Kong, serves as a symbol for the CM heritage of Hong Kong that is deeply rooted in the shared cultural substrate of the GBA. On the right, fluid lines trace the contours of the globe, illustrating Hong Kong's distinctive advantages of enjoying strong support of the Motherland and being closely connected to the world, positioning the city as a bridgehead for CM to go global. The cover background incorporates subtle network patterns, alluding to the contribution of scientific research and digitalisation to CM development.

Through the fusion of traditional cultural symbolism and contemporary visual artistry, the cover visually articulates the guiding principle of the Blueprint, "Guard the wisdom, Forge the future".



Scan the QR code to visit the website



**Guard the wisdom  
Forge the future**



**Health Bureau**  
The Government of the  
Hong Kong Special Administrative Region  
of the People's Republic of China

March 2026