

A) GENERAL NOTES

WORKS TO BE PROVIDED AND INSTALLED BY CONTRACTORS

1. THE CONTRACTORS SHALL BE RESPONSIBLE TO SUPPLY, DESIGN, DELIVERY, INSTALLATION, TESTING AND COMMISSIONING OF THE FORWARD PROCURED EQUIPMENT (FPE) AS SHOWN ON COMPOSITE DRAWINGS.
2. THE CONTRACTORS SHALL CO-ORDINATE ON SITE WITH ALL RELEVANT PARTIES, IN PARTICULAR THE DESIGN AND BUILD CONTRACTOR, FOR THE INSTALLATION.
3. THE CONTRACTORS SHALL SUBMIT ALL FPE INSTALLATION DETAILS TO DESIGN AND BUILD CONTRACTOR FOR CO-ORDINATION AT LEAST 7 DAYS PRIOR TO INSTALLATION.
4. ALL DIMENSIONS SHOWN ON DRAWINGS ARE FOR REFERENCE ONLY. THE CONTRACTORS SHALL BE RESPONSIBLE FOR THE SITE MEASUREMENT TO VERIFY ALL CRITICAL DIMENSIONS BEFORE INSTALLATION AND DELIVERY OF EQUIPMENT.
5. ALL FINAL CONNECTION FROM INTERFACING AND CAPPED OFF POINTS (E.G. ISOLATOR, VALVE, ETC.) TO FPE EQUIPMENT SHALL BE PROVIDED AND INSTALLED BY CONTRACTORS.
6. ALL SERVICES IN DARK SOLID LINE AS SHOWN IN THE DRAWINGS SHALL BE PROVIDED AND INSTALLED BY THE CONTRACTORS UNLESS OTHERWISE SPECIFIED.
7. SETTING OUT OF B.S. PROVISIONS AND BUILDER'S WORKS FOR EQUIPMENT IS FOR INDICATION ONLY. EXACT LOCATION SHALL BE COORDINATED WITH THE DESIGN AND BUILD CONTRACTOR & VERIFIED ON SITE PRIOR TO INSTALLATION.
8. THE CONTRACTORS SHALL BE RESPONSIBLE TO SEAL UP ALL AROUND OF THE EQUIPMENT FOR AIR TIGHTNESS INCLUDING AIR TIGHT CEILING OPENING, CEILING JUNCTION, HANGER WALL, SUNKEN SLAB, INTERFACE BETWEEN FLOOR FINISH AND EQUIPMENT, ETC. IF APPLICABLE.
9. THE CONTRACTORS SHALL BE RESPONSIBLE TO SUPPLY AND INSTALL ALL REQUIRED MATERIAL, FITTING, CABLES, PIPEWORKS, DUCTWORKS, ETC. FOR CONNECTING THE EQUIPMENT TO THE CORRESPONDING BUILDING SERVICES PROVISION BY DESIGN AND BUILD CONTRACTOR AND DESIGN AND BUILD CONTRACTOR'S SUBCONTRACTORS AS SHOWN ON THE COMPOSITE DRAWINGS. ANY REVISION OR ADDITIONAL WORKS ON THE BUILDING SERVICES PROVISIONS, INCLUDING BUT NOT LIMITED TO FIRE SERVICE, LIGHTING, AIR-CONDITIONING & MECHANICAL VENTILATION, DRAINAGE, WATER SUPPLY POINT, MEDICAL GAS OUTLET, ETC., SHALL BE RESPONSIBLE BY CONTRACTORS TO ENSURE THE DESIGN PERFORMANCE WOULD BE NOT AFFECTED AND DEGRADED AFTER INSTALLATION OF EQUIPMENT.
10. THE CONTRACTORS SHALL ENSURE THAT THEIR EQUIPMENT CAN BE DELIVERED TO SITE UPON COORDINATION AND AGREEMENT WITH DESIGN AND BUILD CONTRACTOR ON THE DELIVERY ROUTE AND WORKING SCHEDULE. ALL COSTS FOR ADDITIONAL OR MODIFICATION WORKS RELATED TO BUILDER WORKS SHALL BE BORNE BY THE CONTRACTORS.
11. ALL EQUIPMENT WALL AND FALSE CEILING PANEL CUT OFF, PIPE SLEEVE, SEALING AND MAKE GOOD WORKS SHALL BE DESIGNED, PROVIDED & INSTALLED BY THE CONTRACTORS.
12. SUPPORTING FRAME FOR FPE EQUIPMENT SHALL BE DESIGNED, PROVIDED & INSTALLED BY THE CONTRACTORS, UNLESS OTHERWISE SPECIFIED.
13. THE CONTRACTORS SHALL BE RESPONSIBLE FOR COVER UP ALL CABLE CONTAINMENT (TRUNKING & JUNCTION).
14. THE CONTRACTORS SHALL BE RESPONSIBLE TO DESIGN THE PROVISION FOR MAINTENANCE (E.G. MOUNTING HOOD, ACCESS PANEL, ACCESS DOOR, ETC).
15. ALL FINAL CONNECTION FROM ISOLATION / GATE VALES AND CAPPED-OFF POINTS TO FPE EQUIPMENT WOULD BE PROVIDED AND INSTALLED BY THE CONTRACTORS.
16. THE CONTRACTORS SHALL BE RESPONSIBLE TO ENSURE THEIR INSTALLATION TO COMPLY WITH ALL RELEVANT REGULATION, GUIDELINE, STANDARD, ETC.
17. ALL TEMPORARY WORKING PLATFORM SUCH AS SCAFFOLDING AND MOBILE PLATFORM, ETC. FOR EQUIPMENT INSTALLATION SHALL BE PROVIDED BY THE CONTRACTORS. SAFE WORKING PLATFORM TO THE SATISFACTION OF THE DESIGN AND BUILD CONTRACTOR TO BE PROVIDED BY THE CONTRACTORS.
18. EQUIPOTENTIAL BONDING FOR MEDICAL EQUIPMENT SHOULD BE FINISHED BY THE CONTRACTORS.
19. IF ANY WATER CONNECTION FROM BUILDING CENTRAL WATER SUPPLY SYSTEM, THE CONTRACTORS SHALL EMPLOY LICENSED PLUMBER TO CARRY OUT ALL SUBMISSION (E.G WWO 542 AND WWO46, ETC) AND INSTALLATION / WORKS TO FULFILL WSD REQUIREMENTS.
20. THE CONTRACTORS SHALL BE RESPONSIBLE FOR ALL STATUTORY SUBMISSIONS FOR ANY REVISION OR ADDITIONAL WORKS ON SITE TO SUIT THE INSTALLATION AND DAILY OPERATION OF THE EQUIPMENT IF REQUIRED.
21. THE CONTRACTOR SHALL BE RESPONSIBLE FOR SEALING UP THE RESERVED WALL OPENING AND PROVIDING AND INSTALLING THE APPROPRIATE FIRE BARRIERS, FIRE-STOP SEALANTS, FIRE-STOP BLOCKS, ETC. AS NECESSARY TO MAINTAIN THE FIRE RESISTANCE RATING, WHERE APPLICABLE.
22. THE CONTRACTORS SHALL BE RESPONSIBLE TO RE-PROVIDE, REINSTATE AND MAKE GOOD OF THE FIRE BARRIERS, FIRE-STOP SEALANTS, FIRE-STOP BLOCKS, ETC. FOR FIRE COMPARTMENTATION, FIRE RATED ENCLOSURE, CABLE TRAYS, PIPES AND OTHER PENETRATIONS REQUIRED FOR EQUIPMENT INSTALLATION TO MAINTAIN THE FIRE RESISTANCE RATING, WHERE APPLICABLE.
23. THE DETAIL OF WORKS DEMARCATION BETWEEN THE CONTRACTOR AND THE DESIGN AND BUILD CONTRACTOR SHALL BE REFERRED TO THE LAYOUT AND ELEVATION DRAWINGS.

B) LEGEND

ELECTRICAL INSTALLATION

- ☐ / ⚡ ONE GANG/ TWO GANG SWITCHED 13A SOCKET OUTLET WITH PILOT LIGHT (NORMAL POWER) (MOUNTING LEVEL ABOVE BENCH AT 1150mm AFFL, UNLESS OTHERWISE SPECIFIED)
- ☐ / ⚡<sup>E</sup> ONE GANG/ TWO GANG SWITCHED 13A SOCKET OUTLET WITH PILOT LIGHT (ESSENTIAL POWER) (MOUNTING LEVEL ABOVE BENCH AT 1150mm AFFL, UNLESS OTHERWISE SPECIFIED)
- ☐ / ⚡<sup>2</sup> ONE GANG/ TWO GANG SWITCHED 13A WEATHERPROOF SOCKET OUTLET, IP56 (NORMAL POWER) (MOUNTING LEVEL ABOVE BENCH AT 1150mm AFFL, UNLESS OTHERWISE SPECIFIED)
- ☐ / ⚡<sup>E 2E</sup> ONE GANG/ TWO GANG SWITCHED 13A WEATHERPROOF SOCKET OUTLET, IP56 (ESSENTIAL POWER) (MOUNTING LEVEL ABOVE BENCH AT 1150mm AFFL, UNLESS OTHERWISE SPECIFIED)
- ☐<sup>32</sup> ISOLATOR (RATING AS INDICATED), TPN UNLESS OTHERWISE SPECIFIED (NORMAL POWER) (MOUNTING LEVEL AT 300mm AFCL, UNLESS OTHERWISE SPECIFIED)
- ☐<sup>32E</sup> ISOLATOR (RATING AS INDICATED), TPN UNLESS OTHERWISE SPECIFIED (ESSENTIAL POWER) (MOUNTING LEVEL AT 300mm AFCL, UNLESS OTHERWISE SPECIFIED)
- ZZ ☐<sup>XX</sup> DP SWITCHED 13A FUSED SPUR UNIT WITH PILOT LIGHT (MOUNTING LEVEL AT 300mm AFCL, UNLESS OTHERWISE SPECIFIED)  
"XX" DENOTED THE POWER SUPPLY, E FOR ESSENTIAL, U FOR UPS, INTEGRATED WITH PILOT LIGHT FOR SOCKET AND FUSE SPUR UNIT

EXTRA LOW VOLTAGE INSTALLATION

- ① / ② / ③ IEC60670-1 BASE BOX C/W 1 NO. #25mm G.I. CONDUIT AND DRAW WIRE BY DESIGN AND BUILD CONTRACTOR, DATA PORT W/ COVER PLATE C/W DATA CABLE BY OTHERS (I.E. IT VENDOR, OTHER SYSTEM VENDOR)  
D1: CMH IT SYSTEMS  
D2: F&E SYSTEMS  
D3: BUILDING & OTHER RELATED SYSTEMS

PLUMBING & DRAINAGE INSTALLATION

- ↳ W.P. COLD WATER PIPE C/W GATE VALVE (SIZE AS INDICATED ON DRAWING)
- ↳ H.W.P. HOT WATER PIPE C/W GATE VALVE (SIZE AS INDICATED ON DRAWING)

MEDICAL GAS INSTALLATION

- ↳ SA7 SURGICAL AIR (SA7) COMPRESSED AIR PIPE C/W BALL VALVE (7 BAR)

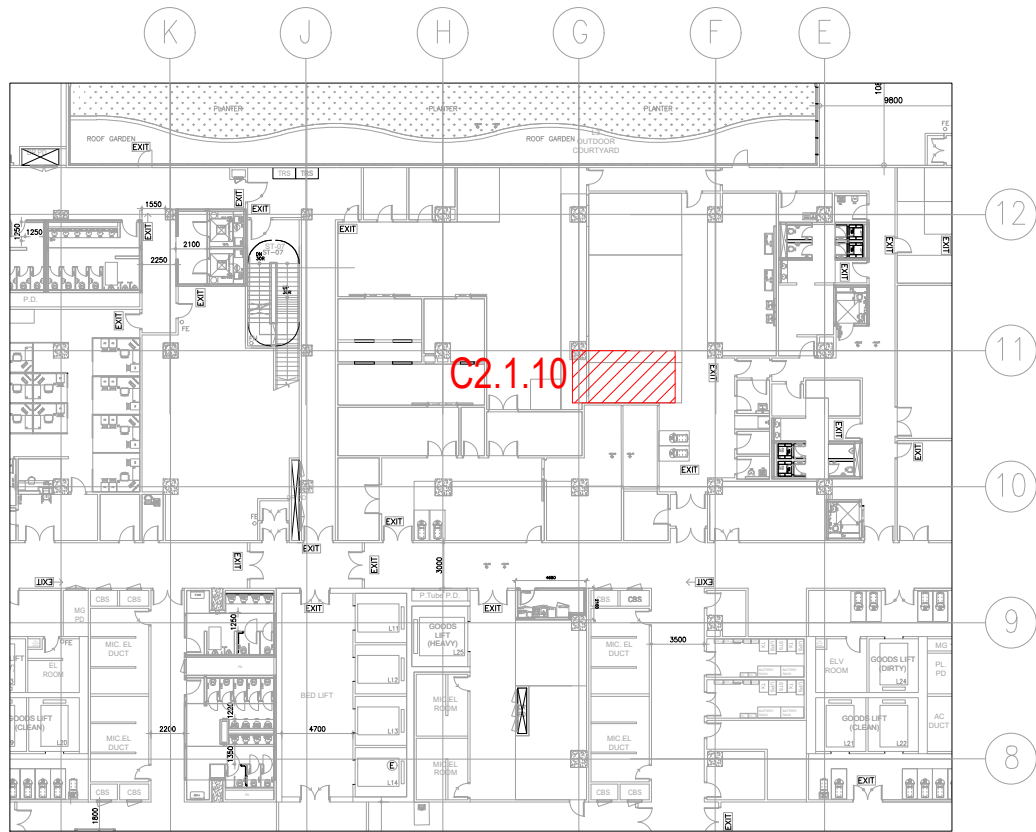
COMPOSITE DRAWING SUBMISSION

REVISIONS		
NUMBER	DESCRIPTION	DATE
0	FIRST SUBMISSION	MAR 2023
1	SECOND SUBMISSION	OCT 2023

C) ROOM CONDITIONS

ROOM NAME: SINGLE COMPARTMENT WASHER (WITH CONVEYOR BELT) (C2.1.10)

- a. TEMPERATURE IN SUMMER & WINTER :24C
- b. HUMIDITY IN SUMMER & WINTER : 60%RH
- c. ILLUMINATION LEVEL : 500LUX
- d. CEILING HEIGHT : 2600mm
- e. CEILING FINISH : ALUMINIUM TILE SUSPENDED CEILING (WET / CLINICAL AREAS) AIRTIGHT
- f. WALL FINISH : CERAMIC TILES
- g. FLOOR FINISH : HOMOGENOUS CERAMIC TILES (NON-SLIP)
- h. SKIRTING FINISH : POLISHED COVERED HOMOGENOUS TILES
- i. FLOOR SLAB IMPOSED LOAD : 16kPa



3/F KEY PLAN SCALE: 1:500

MAIN CONTRACTOR:

中國建築工程(香港)有限公司  
CHINA STATE CONSTRUCTION ENGINEERING (HONG KONG) LIMITED

ARCHITECT

王歐陽(香港)有限公司  
WONG & OUYANG (HKG) LTD

STRUCTURAL ENGINEER

SW

BUILDING SERVICES ENGINEER

wsp

LANDSCAPE DESIGNER

ADI

INTERIOR DESIGNER

V

MODULAR CONSTRUCTION DESIGNER

中國海龍建築科技(香港)有限公司  
CHINA STATE WANG LONG CONSTRUCTION TECHNOLOGY COMPANY LIMITED

MEDICAL CONSULTANT

中國國際醫療產業發展有限公司  
CHINA STATE INTERNATIONAL MEDICAL INDUSTRY DEVELOPMENT CO. LTD.

CONTRACT NO.

SS K514

PROGRAMME NO.

001MZ & 116MH

PROJECT

DESIGN AND CONSTRUCTION OF CHINESE MEDICINE HOSPITAL AND GOVERNMENT CHINESE MEDICINES TESTING INSTITUTE IN TSEUNG KWAN O

DRAWING TITLE

COMPOSITE DRAWING OF AUTOMATED ENDOSCOPIC REPROCESSOR (AER) GENERAL NOTES, LEGEND AND KEY PLAN

DRAWN BY

RW/KL DATE OCT2023

CHECKED BY

KT DATE OCT2023

SCALE

N.T.S. JOB NO. BJY

DRAWING NUMBER

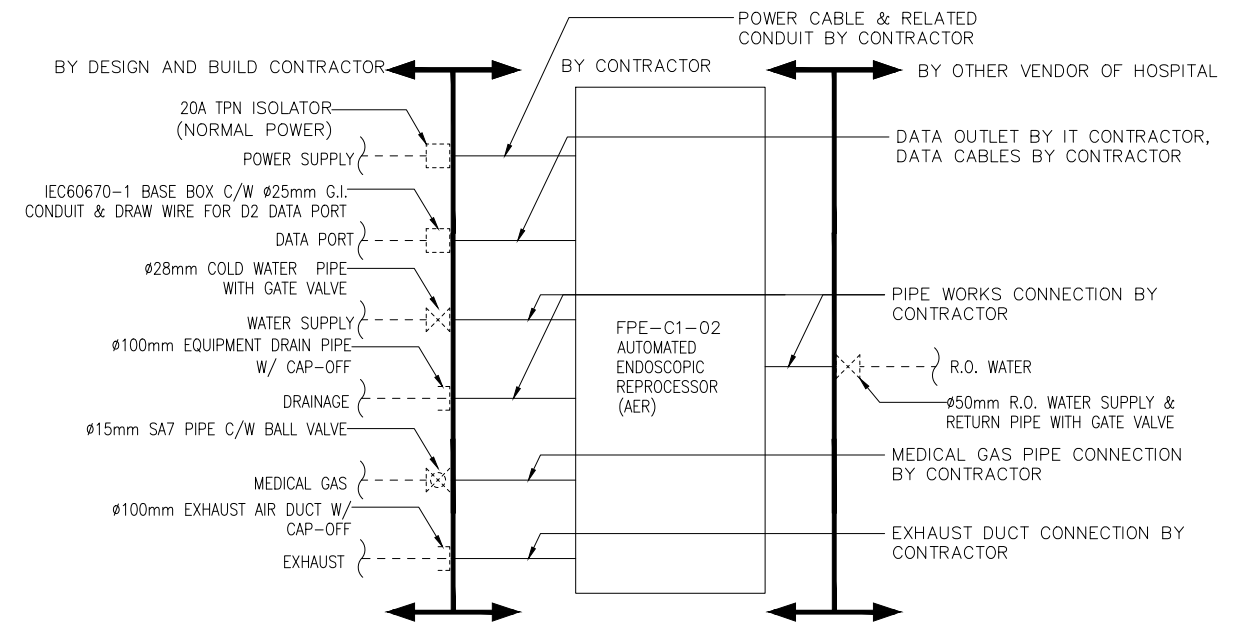
BS/BS15/A/COM/FPE-C1-02/001 REV 1

ARCHITECTURAL SERVICES DEPARTMENT

D) EQUIPMENT SCHEDULE AND DESIGN AND BUILD CONTRACTOR'S PROVISIONS

FPE ITEM NO	DESCRIPTION (QUANTITY)	DESIGN AND BUILD CONTRACTOR'S PROVISIONS	FLOOR / AREA (SOA REF.)
FPE-C1-02	AUTOMATED ENDOSCOPIC REPROCESSOR (AER)  (QTY: 2 NOS.)	<p>FOR EACH NO. OF FPE:</p> <ol style="list-style-type: none"> <li>POWER: 1 x 20A TPN ISOLATOR (NORMAL POWER &amp; WEATHERPROOF)</li> <li>DATA: 1 X IEC60670-1 BASE BOX W/ BLANK PLATE COVER C/W Ø25mm G.I. CONDUIT AND DRAW WIRE FOR D2 DATA PORT</li> <li>COLD WATER: 1 X Ø28mm COLD WATER PIPE C/W GATE VALVE</li> <li>MEDICAL GAS: 1 X Ø15mm SURGICAL AIR (SA7) PIPE C/W BALL VALVE</li> <li>DRAINAGE: 1 x Ø100mm EQUIPMENT DRAIN W/ CAP-OFF</li> <li>EXHAUST: 1 x Ø100mm EXHAUST AIR DUCT W/ CAP-OFF</li> </ol> <p>BUILDER'S WORK:</p> <ol style="list-style-type: none"> <li>WALL OPENING FOR 2 NOS. FPE: 2500mm(W)x2100mm(H)</li> </ol>	3/F SINGLE COMPARTMENT WASHER (WITH CONVEYOR BELT) (C2.1.10)

E) DEMARCATION DIAGRAM:



F) DRAWING LIST

DRAWING NO.	REVISION	DRAWING TITLE
BS/8515/A/COM/FPE-C1-02/001	1	COMPOSITE DRAWING OF AUTOMATED ENDOSCOPIC REPROCESSOR (AER) GENERAL NOTES, LEGEND AND KEY PLAN.
BS/8515/A/COM/FPE-C1-02/002	6	COMPOSITE DRAWING OF AUTOMATED ENDOSCOPIC REPROCESSOR (AER) DEMARCATION DIAGRAM, EQUIPMENT SCHEDULE, DESIGN AND BUILD CONTRACTOR'S PROVISIONS AND DRAWING LIST
BS/8515/A/COM/FPE-C1-02/201	5	COMPOSITE DRAWING OF AUTOMATED ENDOSCOPIC REPROCESSOR (AER) LAYOUT
BS/8515/A/COM/FPE-C1-02/901	5	COMPOSITE DRAWING OF AUTOMATED ENDOSCOPIC REPROCESSOR (AER) ELEVATION

COMPOSITE DRAWING SUBMISSION

REVISIONS		
NUMBER	DESCRIPTION	DATE
0	FIRST SUBMISSION	MAR 2023
1	SECOND SUBMISSION	OCT 2023
2	THIRD SUBMISSION	APR 2024
3	FOURTH SUBMISSION	MAY 2024
4	FIFTH SUBMISSION	AUG 2024
5	SIXTH SUBMISSION	SEP 2024
6	SEVENTH SUBMISSION	OCT 2024

MAIN CONTRACTOR:  
 中國建業工程(香港)有限公司  
 CHINA STATE CONSTRUCTION ENGINEERING (HONG KONG) LIMITED

ARCHITECT  
 王歐陽(香港)有限公司  
 WONG & OUYANG (HK) LTD

STRUCTURAL ENGINEER  
 SW

BUILDING SERVICES ENGINEER  
 WSP

LANDSCAPE DESIGNER  
 ADI

INTERIOR DESIGNER  
 ID

MODULAR CONSTRUCTION DESIGNER  
 中國建業建築科技有限公司  
 CHINA STATE BUILDING CONSTRUCTION TECHNOLOGY COMPANY LIMITED

MEDICAL CONSULTANT  
 中國建業醫療產業發展有限公司  
 CHINA STATE CONSTRUCTION (HK) MEDICAL INDUSTRY DEVELOPMENT CO., LTD.

CONTRACT NO.  
SS K514

PROGRAMME NO.  
001MZ & 116MH

PROJECT  
 DESIGN AND CONSTRUCTION  
 HOSPITAL AND GOVERNMENT  
 CHINESE MEDICINES TESTING  
 INSTITUTE IN TSEUNG KWAN O

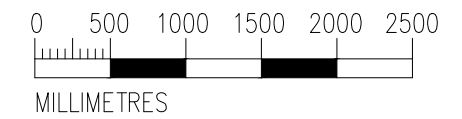
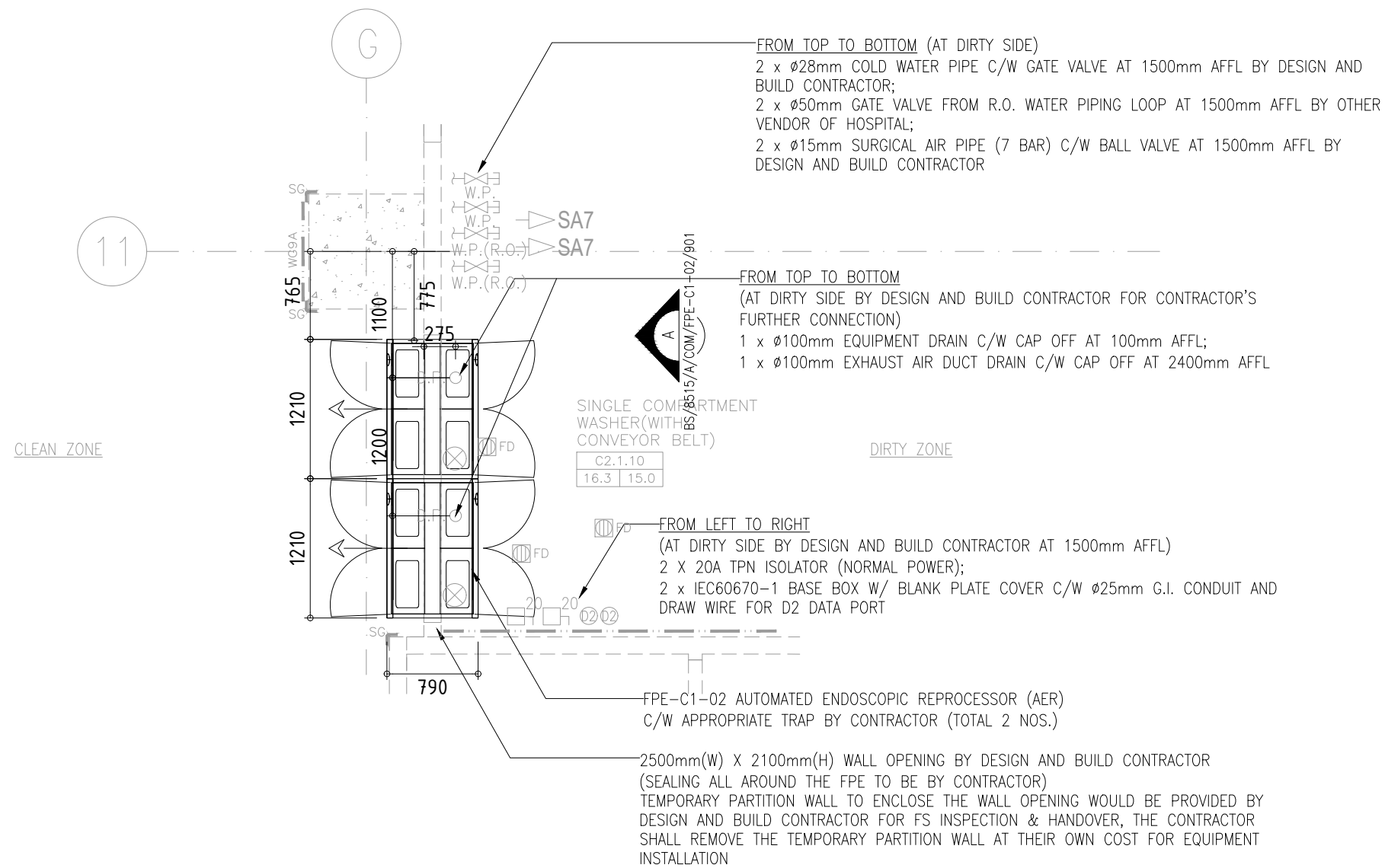
DRAWING TITLE  
 COMPOSITE DRAWING OF AUTOMATED  
 ENDOSCOPIC REPROCESSOR (AER)  
 DEMARCATION DIAGRAM, EQUIPMENT  
 SCHEDULE, DESIGN AND BUILD  
 CONTRACTOR'S PROVISIONS AND  
 DRAWING LIST

DRAWN BY: SW/KL DATE: APR2024  
 CHECKED BY: KT DATE: APR2024

SCALE: N.T.S. JOB NO.: BJY  
 DRAWING NUMBER: BS/8515/A/COM/FPE-C1-02/002 REV: 6

ARCHITECTURAL SERVICES DEPARTMENT

# 3/F SINGLE COMPARTMENT WASHER(WITH CONVEYOR BELT) (C2.1.10)



1 : 50

REVISIONS		
NUMBER	DESCRIPTION	DATE
0	FIRST SUBMISSION	MAR 2023
1	SECOND SUBMISSION	OCT 2023
2	THIRD SUBMISSION	APR 2024
3	FOURTH SUBMISSION	MAY 2024
4	FIFTH SUBMISSION	AUG 2024
5	SIXTH SUBMISSION	OCT 2024

MAIN CONTRACTOR:  
 中國建業工程(香港)有限公司  
 CHINA STATE CONSTRUCTION ENGINEERING (HONG KONG) LIMITED

ARCHITECT  
 王歐陽(香港)有限公司  
 WONG & OUYANG (HK) LTD

STRUCTURAL ENGINEER  
 SW

BUILDING SERVICES ENGINEER  
 WSP

LANDSCAPE DESIGNER  
 ADI

INTERIOR DESIGNER  
 V

MODULAR CONSTRUCTION DESIGNER  
 中國建業建築科技有限公司  
 CHINA STATE BUILDING CONSTRUCTION TECHNOLOGY COMPANY LIMITED

MEDICAL CONSULTANT  
 中國建業醫療設備發展有限公司  
 CHINA STATE CONSTRUCTION (HK) MEDICAL EQUIPMENT DEVELOPMENT CO., LTD.

CONTRACT NO.  
 SS K514

PROGRAMME NO.  
 001MZ & 116MH

PROJECT  
 DESIGN AND CONSTRUCTION OF CHINESE MEDICINE HOSPITAL AND GOVERNMENT CHINESE MEDICINES TESTING INSTITUTE IN TSEUNG KWAN O

DRAWING TITLE  
 COMPOSITE DRAWING OF AUTOMATED ENDOSCOPIC REPROCESSOR (AER) LAYOUT


DRAWN BY SW/KL DATE APR2024  
 CHECKED BY KT DATE APR2024  
 SCALE 1:50 JOB NO. BJY  
 DRAWING NUMBER REV  
 BS/8515/A/COM/FPE-C1-02/201 5

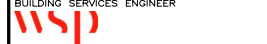
ARCHITECTURAL SERVICES DEPARTMENT

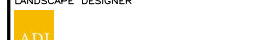
REVISIONS		
NUMBER	DESCRIPTION	DATE
0	FIRST SUBMISSION	MAR 2023
1	SECOND SUBMISSION	OCT 2023
2	THIRD SUBMISSION	APR 2024
3	FOURTH SUBMISSION	MAY 2024
4	FIFTH SUBMISSION	AUG 2024
5	SIXTH SUBMISSION	OCT 2024


MAIN CONTRACTOR:  
 中國建業工程(香港)有限公司  
 CHINA STATE CONSTRUCTION ENGINEERING HONG KONG LIMITED

ARCHITECT  
 王歐陽(香港)有限公司  
 WONG & OUYANG (HK) LTD

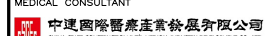
STRUCTURAL ENGINEER  
 SW

BUILDING SERVICES ENGINEER  
 WSP

LANDSCAPE DESIGNER  
 ADI

INTERIOR DESIGNER  
 V

MODULAR CONSTRUCTION DESIGNER  
 中國建業建築科技有限公司  
 CHINA STATE BUILDING CONSTRUCTION TECHNOLOGY COMPANY LIMITED

MEDICAL CONSULTANT  
 中國建業醫療產業發展有限公司  
 CHINA STATE CONSTRUCTION (HK) MEDICAL INDUSTRY DEVELOPMENT CO., LTD.

CONTRACT NO.  
 SS K514

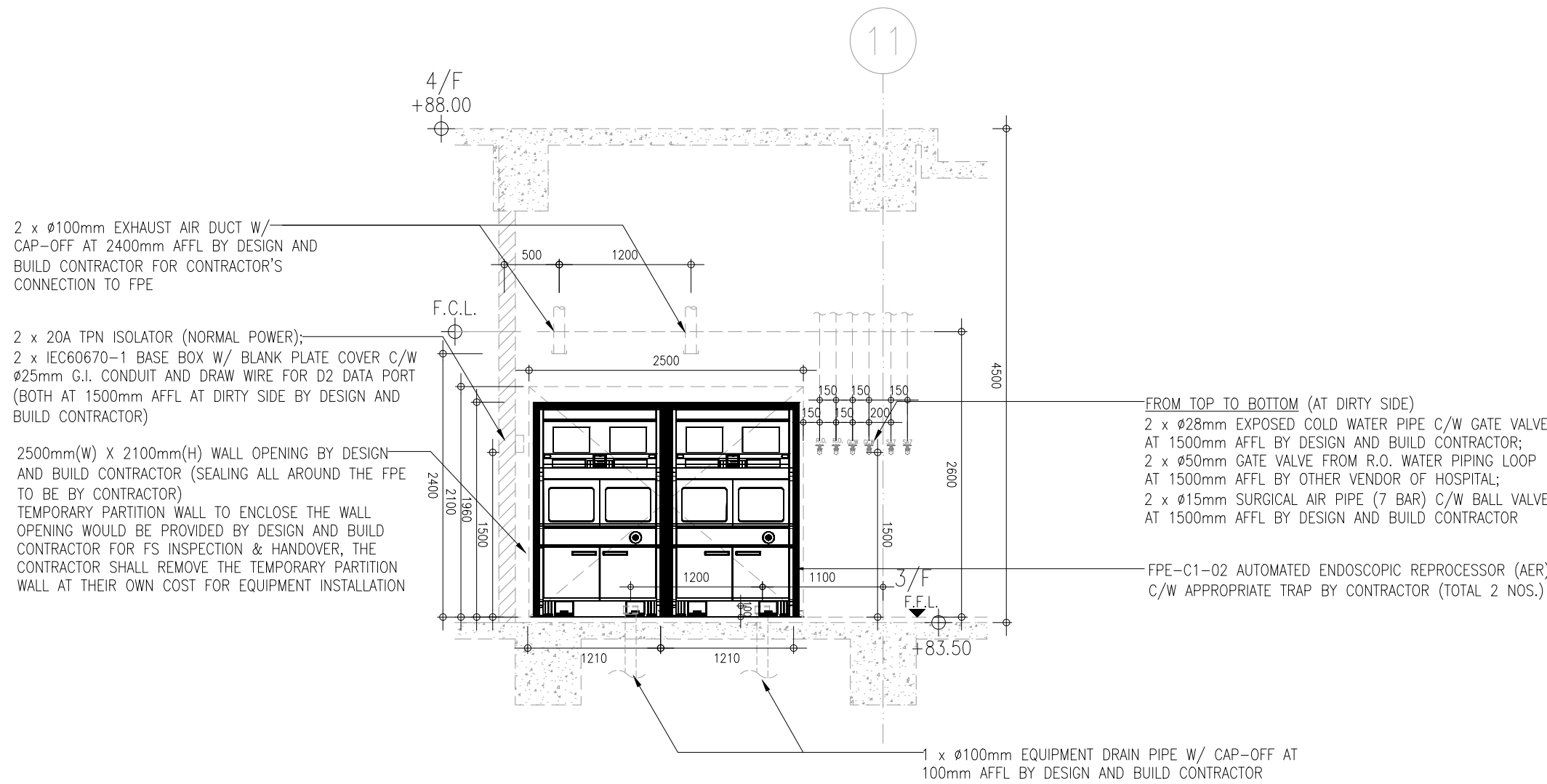
PROGRAMME NO.  
 001MZ & 116MH

PROJECT  
 DESIGN AND CONSTRUCTION  
 OF CHINESE MEDICINE  
 HOSPITAL AND GOVERNMENT  
 CHINESE MEDICINES TESTING  
 INSTITUTE IN TSEUNG KWAN O

DRAWING TITLE  
 COMPOSITE DRAWING OF  
 AUTOMATED ENDOSCOPIC  
 REPROCESSOR (AER)  
 ELEVATION

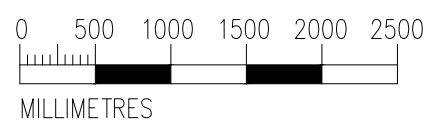
DRAWN BY SW/KL DATE APR2024  
 CHECKED BY KT DATE APR2024  
 SCALE 1:50 JOB NO. BJY  
 DRAWING NUMBER REV  
 BS/8515/A/COM/FPE-C1-02/901 5

 ARCHITECTURAL  
 SERVICES  
 DEPARTMENT



ELEVATION A

REFERENCE LAYOUT PLAN:  
 BS/8515/A/COM/FPE-C1-02/201



1 : 50