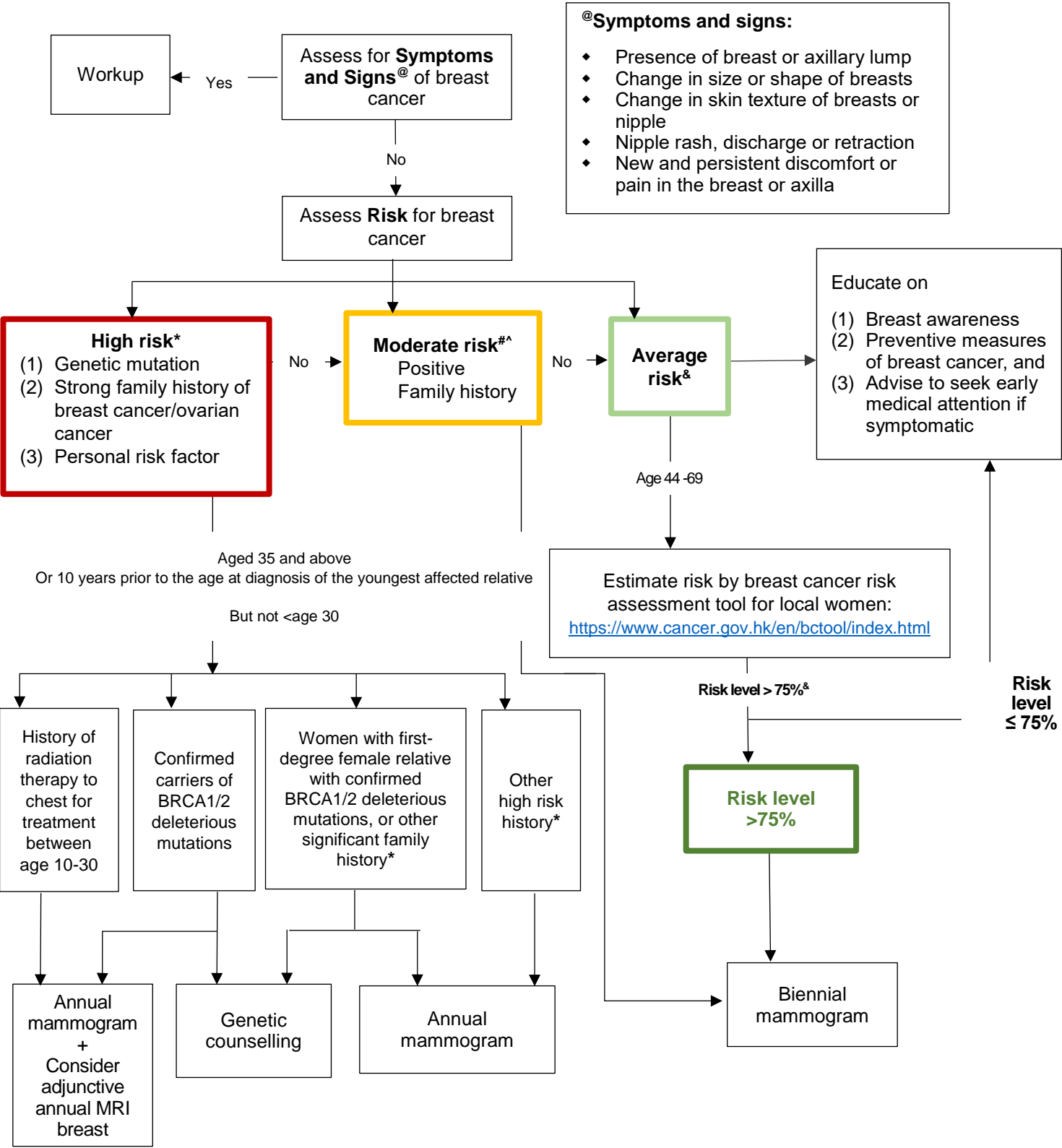


Figure 1. Breast Cancer Screening Workflow

(For details, refer to the Recommended Care Component)



Risk Groups	Risk Factors
High Risk*	<b>If any one of the below risk factors:</b>  <b>1. Genetic mutation</b> <ul style="list-style-type: none"><li>• Carriers of BRCA1/2 deleterious mutations confirmed by genetic testing</li></ul> <b>2. Family history of breast cancer/ovarian cancer</b> <ul style="list-style-type: none"><li>• Any first-degree female relative is a confirmed carrier of BRCA1/2 deleterious mutations</li><li>• Any first- or second-degree female relative with both breast cancer and ovarian cancer</li><li>• Any first-degree female relative with bilateral breast cancer</li><li>• Any male relative with a history of breast cancer</li><li>• 2 first-degree female relatives with breast cancer AND one of them being diagnosed at age ≤50 years</li><li>• ≥2 first- or second-degree female relatives with ovarian cancer</li><li>• ≥3 first- or second-degree female relatives with breast cancer OR a combination of breast cancer and ovarian cancer</li></ul> <b>3. Personal risk factors</b> <ul style="list-style-type: none"><li>• History of radiation therapy to chest for treatment between age 10 and 30 years, e.g. Hodgkin's disease</li><li>• History of breast cancer, including ductal carcinoma in situ (DCIS); lobular carcinoma</li><li>• History of atypical ductal hyperplasia or atypical lobular hyperplasia</li></ul>
Moderate Risk <sup>#</sup>	<b>1. Family history</b> <ul style="list-style-type: none"><li>• Only one first-degree female relative with breast cancer diagnosed at ≤50 years of age</li><li>• Two first-degree female relatives diagnosed with breast cancer after the age of 50 years</li></ul>
Increased Risk <sup>&amp;</sup>	Estimated by <b>breast cancer risk assessment tool</b> for local women ( <a href="https://www.cancer.gov.hk/en/bctool/">www.cancer.gov.hk/en/bctool/</a> ) to be at <b>&gt;75% risk</b> compared to women of the same age, based on the following personalised risk factors: <ul style="list-style-type: none"><li>• Family history of breast cancer among first-degree relative</li><li>• Prior diagnosis of benign breast disease</li><li>• Nulliparity</li><li>• Late age of first live birth</li><li>• Early age of menarche</li><li>• High body mass index</li><li>• Physical inactivity</li></ul>

DCIS = Ductal Carcinoma in Situ